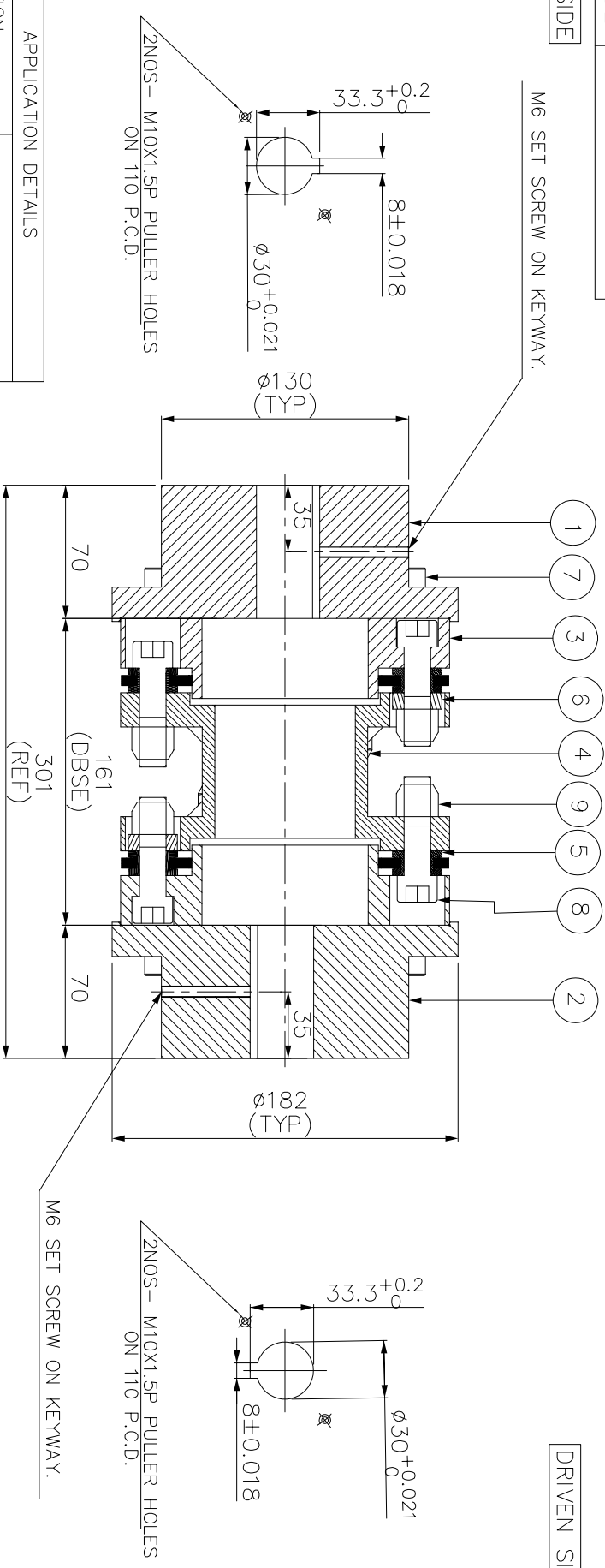


ERP CODE:

8 DRIVE SIDE DRIVEN SIDE



APPLICATION DETAILS

APPLICATION	-
RATED POWER	-
RATED SPEED	-
RATED TORQUE	-
A.S.F.	-
COUPLING SPECIFICATIONS	
COUPLING RATING	36.3 KW @ 100 RPM
RATED TORQUE	3466 Nm
MAX. BORE	90 mm
WEIGHT (Approx.)	31.164 kg
INERTIA (WK ²)	0.115 kg·M ²
TORSIONAL STIFFNESS	0.749 MNm/rad
CPLG DYNAMIC BALANCING TO GR 6.3 AS PER ISO 21940-11	
MAX. MISALIGNMENT	
AXIAL DEFLECTION	±1 mm
ANGULAR DEFLECTION	0.75°
RADIAL MISALIGNMENT	0.013mm

NOTE:-

TIGHTENING TORQUE :-

- 1) SR.NO.8 COUPLING BOLT = 161Nm
- 2) SR.NO.7 ATTACHMENT BOLT = 59Nm

SR.NO.	DESCRIPTION	MATERIAL	QTY.
9	CLEVELOOK NUT	GR.10	12
8	COUPLING BOLT	AH BOLT GR. 12.9	12
7	ATTACHMENT BOLT (I)	AH BOLT GR. 12.9	12
6	SLEEVE	ASTM A 1040	6
5	ELEMENT BLADE ASSEMBLY	AISI SS 301	2
4	SPACER	ASTM A106B,ASTM A36\ ASTM A1040	1
3	ADAPTER I/II	ASTM A 1040	2
2	DRIVEN HUB (I)	ASTM A 1040	1
1	DRIVE HUB (I)	ASTM A 1040	1

TITLE: REM-370(161)/I /XXXX CPLG

CUSTOMER NAME: RATHI TRANSPOWER PVT LTD PUNE-411014

MATERIAL: REFER TABLE

AUTHORITY/INITIALS: SIGN: DATE:

DRAWN: CHECKED: APPROVED: SCALE: NTS REF. NO. L/REM-XXXX/0