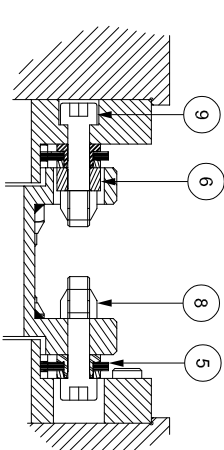


APPLICATION DETAILS	
APPLICATION	-
RATED POWER	-
RATED SPEED	-
RATED TORQUE	-
A.S.F.	-
COUPLING SPECIFICATIONS	
COUPLING RATING	2.40 KW @ 100 RPM
RATED TORQUE	229 Nm
MAX. BORE	72 mm
WEIGHT (Approx.)	8.467 kg
INERTIA (WK ²)	0.012 kg.M ²
TORSIONAL STIFFNESS	0.043 MNm/rad
CPLG DYNAMIC BALANCING TO GR 6.3 AS PER ISO 21940-11	
MAX. MISALIGNMENT	
AXIAL DEFLECTION	± 1 mm
ANGULAR DEFLECTION	0.75°
RADIAL MISALIGNMENT	0.013mm



NOTE:-
TIGHTENING TORQUE:-
 1) SR.NO.9 COUPLING BOLT = 12.1 Nm
 2) SR.NO.7 ATTACHMENT BOLT = 29 Nm

REV. NO.	DESCRIPTION	REV. BY	APPD. BY	DATE

SR.NO.	DESCRIPTION	MATERIAL	QTY.
9	COUPLING BOLT	AH BOLT GR.12.9	12
8	CLEVELOCK NUT	GR. 10	12
7	ATTACHMENT BOLT(IV)	AH BOLT GR. 12.9	12
6	SLEEVE	ASTM A 1040	6
5	ELEMENT BLADE ASSEMBLY	AISI SS 301	2
4	SPACER	ASTM A1008, ASTM A361 ASTM A1040	1
3	ADAPTER III/IV	ASTM A 1040	2
2	DRIVEN HUB (IV)	ASTM A 1040	1
1	DRIVE HUB (IV)	ASTM A 1040	1

TITLE: REM-25(89) (IV/IV)
REF. TABLE: REM-25(89) (IV/IV)
CUSTOMER NAME: RATHI TRANSPOWER PVT LTD
SCALE: 1:1
DATE: 14.01.19
APPROVED: XXX
CHECKED: XXX
DRAWN: XXX
REV. NO.: R/SD-XXXX/0
DRG. NO.: R/SD-XXXX/0
3 EN-F-112-Rev1