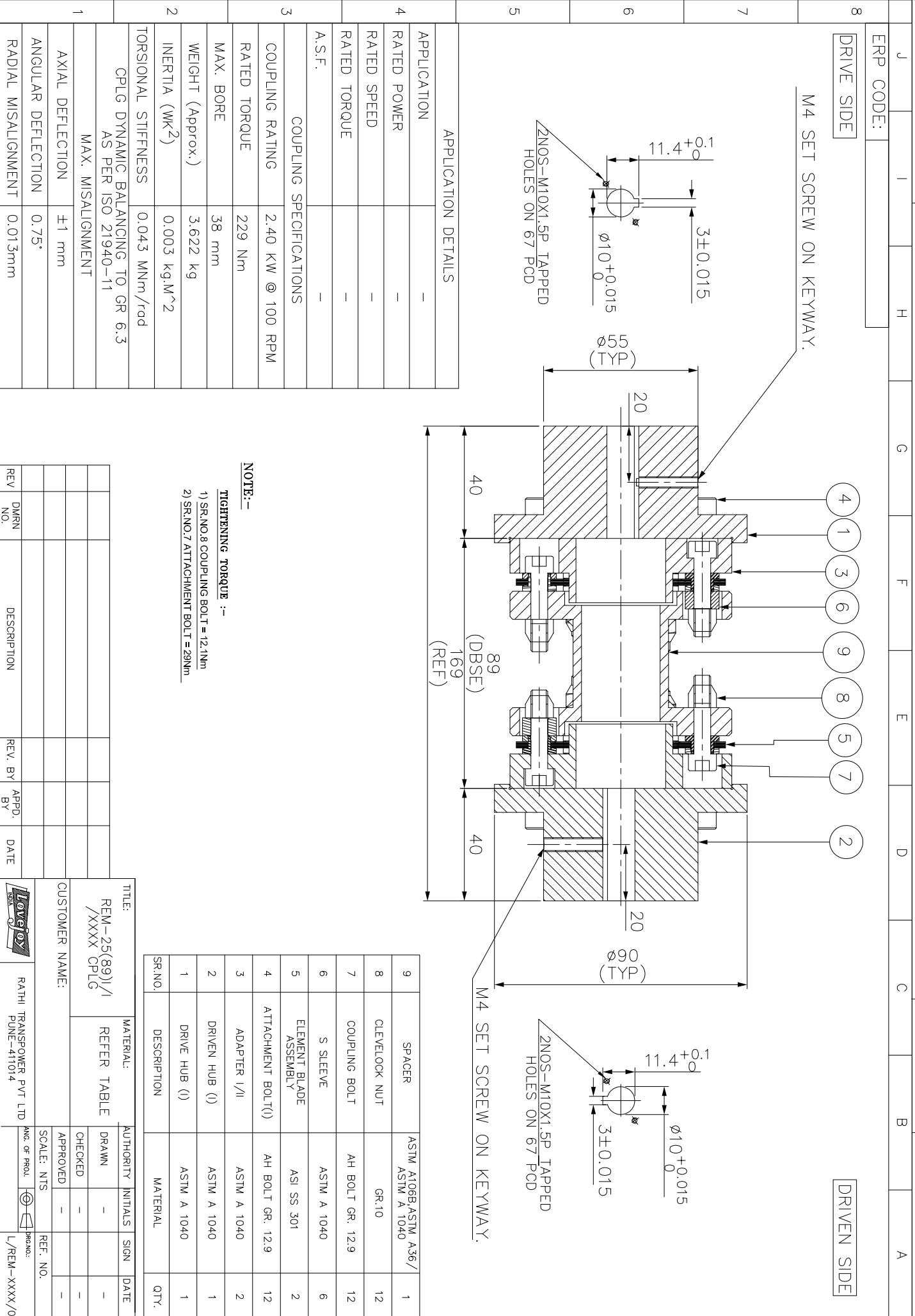


IF IN DOUBT, PLEASE ASK

DO NOT SCALE

ALL DIMENSIONS ARE IN mm



APPLICATION DETAILS	
APPLICATION	-
RATED POWER	-
RATED SPEED	-
RATED TORQUE	-
A.S.F.	-
COUPLING SPECIFICATIONS	
COUPLING RATING	2.40 KW @ 100 RPM
RATED TORQUE	229 Nm
MAX. BORE	38 mm
WEIGHT (Approx.)	3.622 kg
INERTIA (WK ²)	0.003 kg.M ²
TORSIONAL STIFFNESS	0.043 MNm/rod
CPLG DYNAMIC BALANCING TO GR 6.3 AS PER ISO 21940-11	
MAX. MISALIGNMENT	
AXIAL DEFLECTION	±1 mm
ANGULAR DEFLECTION	0.75°
RADIAL MISALIGNMENT	0.013mm

REV	DMRN NO.	DESCRIPTION	REV. BY	APPD. BY	DATE

NOTE:-
TIGHTENING TORQUE :-
 1) SR.NO.8 COUPLING BOLT = 12.1Nm
 2) SR.NO.7 ATTACHMENT BOLT = 29Nm

SR.NO.	DESCRIPTION	MATERIAL	QTY.
9	SPACER	ASTM A106B,ASTM A36/ ASTM A 1040	1
8	CLEVELOCK NUT	GR.10	12
7	COUPLING BOLT	AH BOLT GR. 12.9	12
6	S SLEEVE	ASTM A 1040	6
5	ELEMENT BLADE ASSEMBLY	ASI SS 301	2
4	ATTACHMENT BOLT(I)	AH BOLT GR. 12.9	12
3	ADAPTER I/II	ASTM A 1040	2
2	DRIVEN HUB (I)	ASTM A 1040	1
1	DRIVE HUB (I)	ASTM A 1040	1

Lovalloy logo

TITLE: REM-25(89)/1 /XXXX CPLG

CUSTOMER NAME: RATHI TRANSPower PVT LTD PUNE-411014

MATERIAL: REFER TABLE

AUTHORITY INITIALS: [] SIGN: [] DATE: []

CHECKED: []

APPROVED: []

SCALE: NTS

REF. NO. L/REM-XXXX/0

This drawing/ information/ design is the property of Rathi Transpower Pvt. Ltd. It is confidential & must not be made public or copied without prior written authorization & is subjected to recall at any time. Acceptance of this drawing constitutes full arrangements with these conditions.