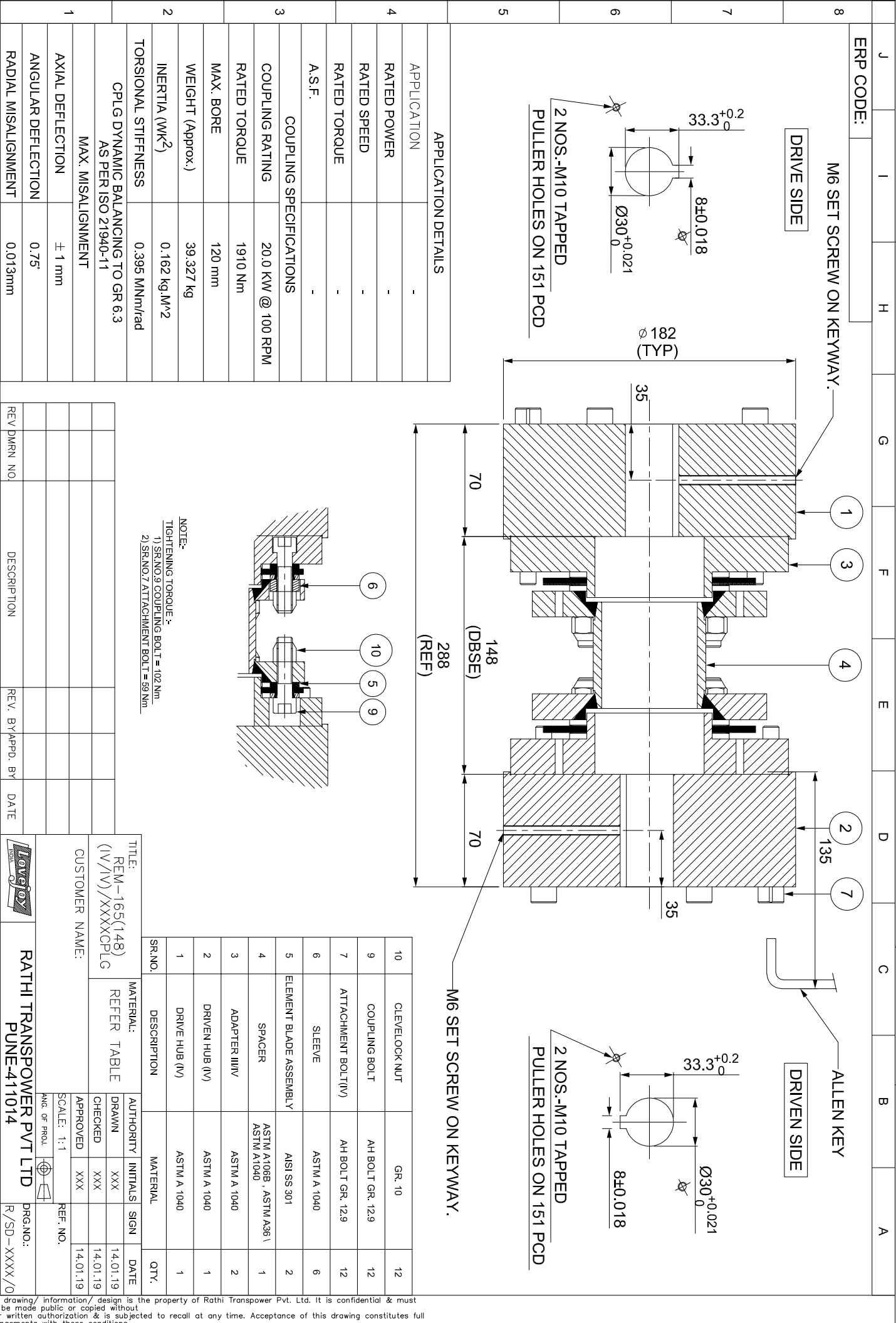


IF IN DOUBT, PLEASE ASK

DO NOT SCALE ALL DIMENSIONS ARE IN mm



ERP CODE:	J	I	H	G	F	E	D	C	B	A
M6 SET SCREW ON KEYWAY.										

APPLICATION	10
RATED POWER	GR. 10
RATED SPEED	AH BOLT GR. 12.9
RATED TORQUE	AH BOLT GR. 12.9
A.S.F.	ASTM A 1040
COUPLING SPECIFICATIONS	
COUPLING RATING	20.0 KW @ 100 RPM
RATED TORQUE	1910 Nm
MAX. BORE	120 mm
WEIGHT (Approx.)	39.327 kg
INERTIA (WK ²)	0.162 kg.M ²
TORSIONAL STIFFNESS	0.395 MNm/rad
CPLG DYNAMIC BALANCING TO GR.6.3 AS PER ISO 21940-11	
MAX. MISALIGNMENT	
AXIAL DEFLECTION	± 1 mm
ANGULAR DEFLECTION	0.75°
RADIAL MISALIGNMENT	0.013mm

SR.NO.	DESCRIPTION	MATERIAL	QTY.
1	DRIVE HUB (IV)	ASTM A 1040	1
2	DRIVEN HUB (IV)	ASTM A 1040	1
3	ADAPTER III/IV	ASTM A 1040	2
4	SPACER	ASTM A106B, ASTM A361, ASTM A1040	1
5	ELEMENT BLADE ASSEMBLY	AI SI SS 301	2
6	SLEEVE	ASTM A 1040	6
7	ATTACHMENT BOLT(IV)	AH BOLT GR. 12.9	12
9	COUPLING BOLT	AH BOLT GR. 12.9	12
10	CLEVELOCK NUT	GR. 10	12

NOTE:
TIGHTENING TORQUE :-
1) SR.NO.8 COUPLING BOLT = 102 Nm.
2) SR.NO.7 ATTACHMENT BOLT = 89 Nm.

Lovejoy logo

RATHI TRANSPOWER PVT LTD
PUNE-411014

TITLE: REM-165(148) (IV/IV)/XXXXCPLG

CUSTOMER NAME:

SCALE: 1:1

APPROVED: XXX

DATE: 14.01.19

DRG.NO.: R/SD-XXXX/0