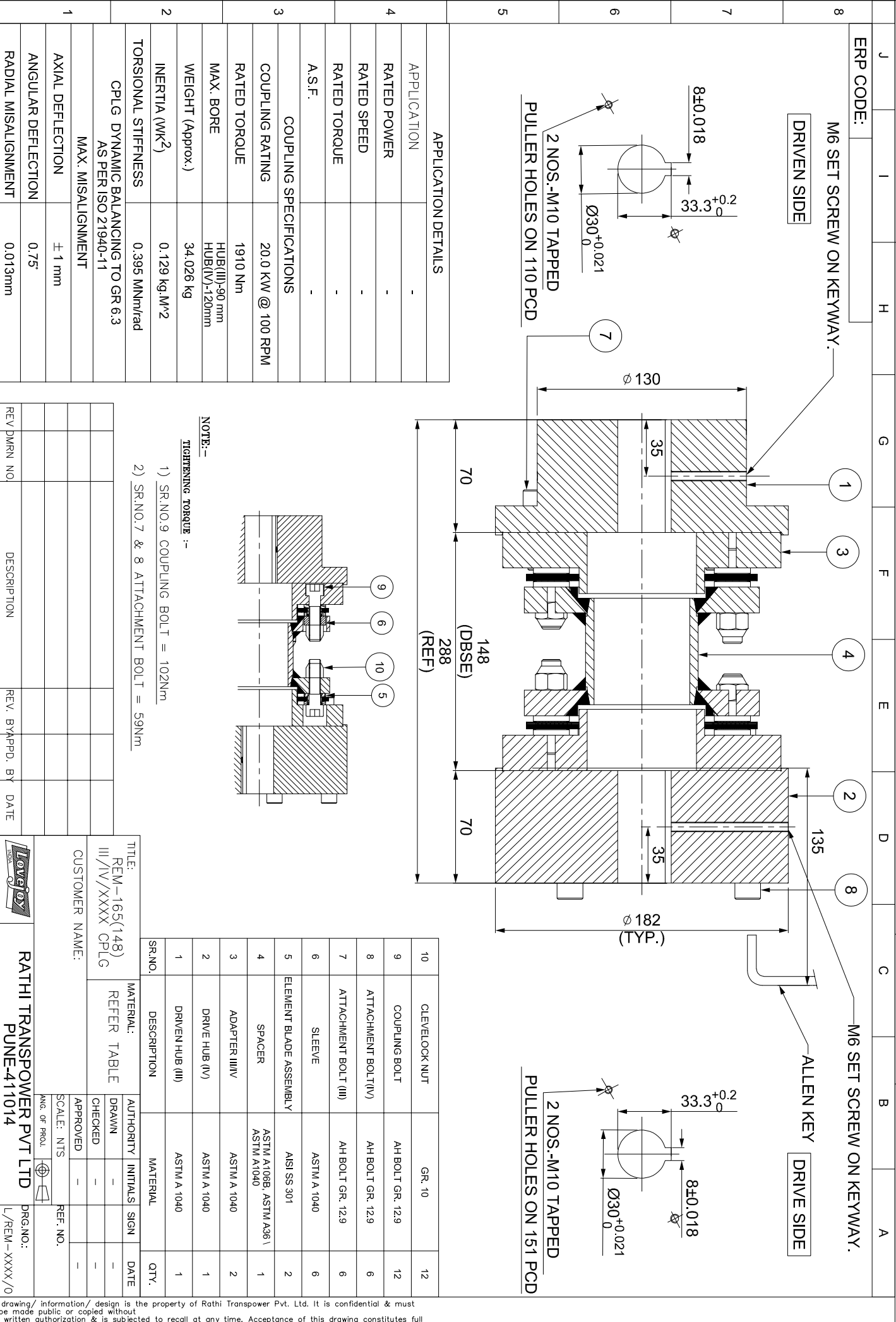
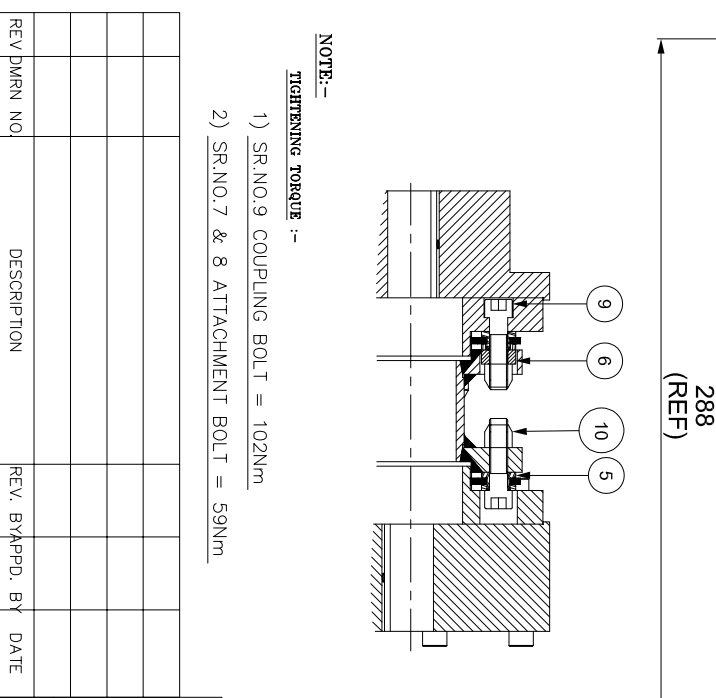


IF IN DOUBT, PLEASE ASK

DO NOT SCALE ALL DIMENSIONS ARE IN mm



APPLICATION DETAILS	
APPLICATION	-
RATED POWER	-
RATED SPEED	-
RATED TORQUE	-
A.S.F.	-
COUPLING SPECIFICATIONS	
COUPLING RATING	20.0 KW @ 100 RPM
RATED TORQUE	1910 Nm
MAX. BORE	HUB(III)-90 mm HUB(IV)-120mm
WEIGHT (Approx.)	34.026 kg
INERTIA (WK <sup>2</sup> )	0.129 kg.M <sup>2</sup>
TORSIONAL STIFFNESS	0.395 MNm/rad
CPLG DYNAMIC BALANCING TO GR 6.3 AS PER ISO 21940-11	
MAX. MISALIGNMENT	
AXIAL DEFLECTION	$\pm 1$ mm
ANGULAR DEFLECTION	0.75°
RADIAL MISALIGNMENT	0.013mm



NOTE:-  
TIGHTENING TORQUE :-

- 1) SR.NO.9 COUPLING BOLT = 102Nm
- 2) SR.NO.7 & 8 ATTACHMENT BOLT = 59Nm

SERIAL NO.	DESCRIPTION	MATERIAL	QTY.
10	CLEVELOCK NUT	GR-10	12
9	COUPLING BOLT	AH BOLT GR-12.9	12
8	ATTACHMENT BOLT(IV)	AH BOLT GR-12.9	6
7	ATTACHMENT BOLT (III)	AH BOLT GR-12.9	6
6	SLEEVE	ASTM A 1040	6
5	ELEMENT BLADE ASSEMBLY	ASI SS 301	2
4	SPACER	ASTM A1066, ASTM A361 ASTM A1040	1
3	ADAPTER III/IV	ASTM A 1040	2
2	DRIVE HUB (IV)	ASTM A 1040	1
1	DRIVEN HUB (III)	ASTM A 1040	1

TITLE:	REM-165(148)	
CUSTOMER NAME:	III/IV/XXXX CPLG	
AUTHORITY	INITIALS	DATE
DRAWN	-	-
CHECKED	-	-
APPROVED	-	-
SCALE: NTS	REF. NO.	

**Lovejoy** logo

**RATHI TRANSPOWER PVT LTD**  
PUNE-411014

DRG.NO.: L/REM-XXXX/0

This drawing / information / design is the property of Rathi Transpower Pvt. Ltd. It is confidential & must not be made public or copied without prior written authorization & is subjected to recall at any time. Acceptance of this drawing constitutes full arrangements with these conditions.