

J I H G F E D C B A

ERP CODE:

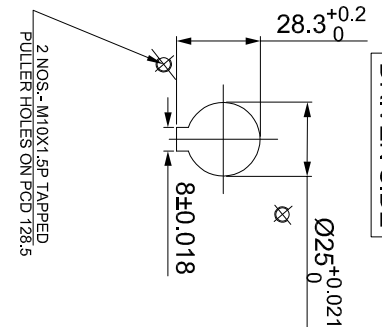
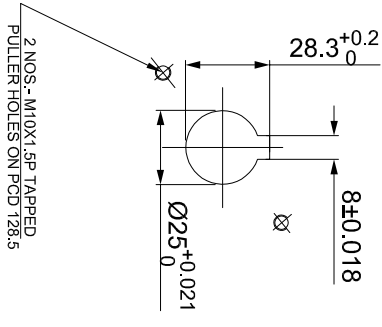


M6 SET SCREW ON KEYWAY.

ALLEN KEY

DRIVE SIDE

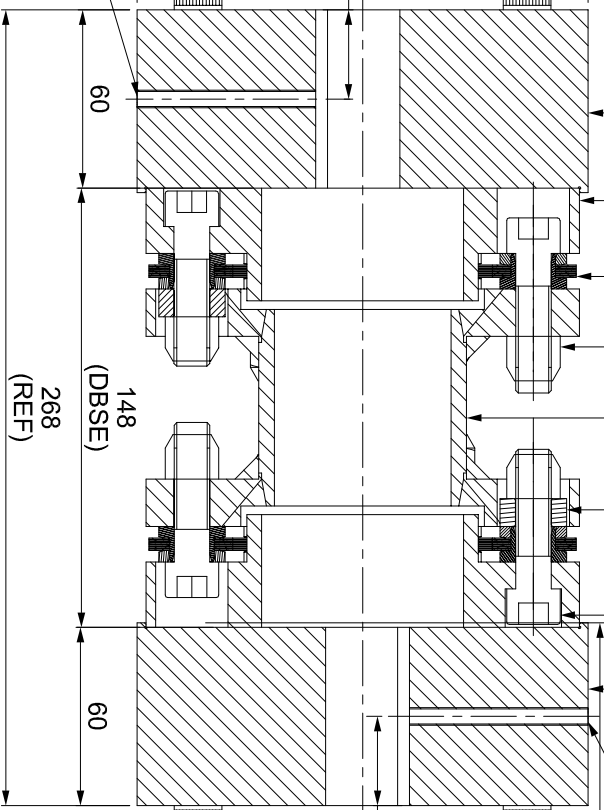
DRIVEN SIDE



2 NOS. - M10X1.5P TAPPED PULLER HOLES ON PCD 128.5

2 NOS. - M10X1.5P TAPPED PULLER HOLES ON PCD 128.5

M6 SET SCREW ON KEYWAY.



APPLICATION DETAILS

APPLICATION	-
RATED POWER	-
RATED SPEED	-
RATED TORQUE	-
A.S.F.	-
COUPLING SPECIFICATIONS	
COUPLING RATING	20.0 KW @ 100 RPM
RATED TORQUE	1910 Nm
MAX. BORE	102mm
WEIGHT (Approx.)	25.712 kg
INERTIA (WK ²)	0.077 kg.M ²
TORSIONAL STIFFNESS	0.395 MNm/rad
CPLG DYNAMIC BALANCED TO GR 6.3 AS PER ISO 21940-11	
MAX. MISALIGNMENT	
AXIAL DEFLECTION	± 1 mm
ANGULAR DEFLECTION	0.75°
RADIAL MISALIGNMENT	0.013mm

268 (REF)

148 (DBSE)

TIGHTENING TORQUE :-

- 1) SR.NO.8 COUPLING BOLT = 102 Nm
- 2) SR.NO.7 ATTACHMENT BOLT = 59 Nm

9	CLEVELOCK NUT	GR.10	12
8	COUPLING BOLT	AH BOLT GR. 12.9	12
7	ATTACHMENT BOLT (II)	AH BOLT GR. 12.9	12
6	S SLEEVE	ASTM A 1040	6
5	ELEMENT BLADE ASSEMBLY	AISI SS 301	2
4	SPACER	ASTM A1088 ,ASTM A361 ASTM A1040	1
3	ADAPTER IIII	ASTM A 1040	2
2	DRIVEN HUB (II)	ASTM A 1040	1
1	DRIVE HUB (II)	ASTM A 1040	1

TITLE:	REM-165(148) IIII /—CPLG
CUSTOMER NAME:	
MATERIAL:	REFER TABLE
AUTHORITY	INITIALS
DRAWN	—
CHECKED	—
APPROVED	—
SCALE:	1:1
REF. NO.	

Lovejoy logo

RATHI TRANSPOWER PVT LTD
PUNE-411014

DRG.NO.: XXXX