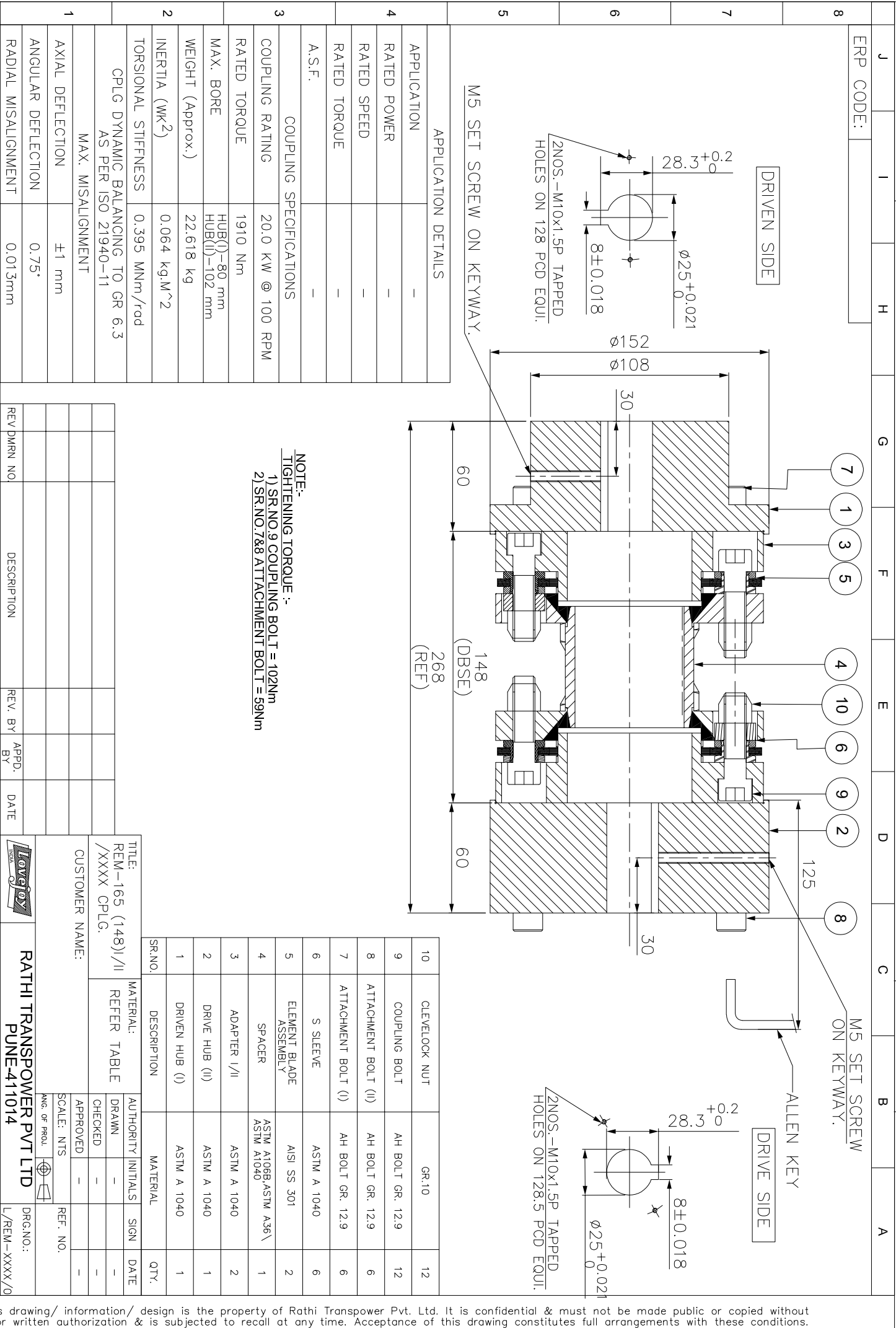


IF IN DOUBT, PLEASE ASK

DO NOT SCALE ALL DIMENSIONS ARE IN mm



APPLICATION DETAILS	
APPLICATION	-
RATED POWER	-
RATED SPEED	-
RATED TORQUE	-
A.S.F.	-
COUPLING SPECIFICATIONS	
COUPLING RATING	20.0 KW @ 100 RPM
RATED TORQUE	1910 Nm
MAX. BORE	HUB(I)-80 mm HUB(II)-102 mm
WEIGHT (Approx.)	22.618 kg
INERTIA (WK ²)	0.064 kg.M ²
TORSIONAL STIFFNESS	0.395 MNm/rod
CPLG DYNAMIC BALANCING TO GR 6.3 AS PER ISO 21940-11	
MAX. MISALIGNMENT	
AXIAL DEFLECTION	±1 mm
ANGULAR DEFLECTION	0.75°
RADIAL MISALIGNMENT	0.013mm

REV DMRN NO.	DESCRIPTION	REV. BY	APPD. BY	DATE

SR.NO.	DESCRIPTION	MATERIAL	QTY.
10	CLEVELOCK NUT	GR.10	12
9	COUPLING BOLT	AH BOLT GR. 12.9	12
8	ATTACHMENT BOLT (II)	AH BOLT GR. 12.9	6
7	ATTACHMENT BOLT (I)	AH BOLT GR. 12.9	6
6	S SLEEVE	ASTM A 1040	6
5	ELEMENT BLADE ASSEMBLY	AISI SS 301	2
4	SPACER	ASTM A1068,ASTM A36\ ASTM A1040	1
3	ADAPTER I/II	ASTM A 1040	2
2	DRIVE HUB (II)	ASTM A 1040	1
1	DRIVEN HUB (I)	ASTM A 1040	1

NOTE:-
TIGHTENING TORQUE :-
 1) SR.NO.9 COUPLING BOLT = 102Nm
 2) SR.NO.7&8 ATTACHMENT BOLT = 59Nm

TITLE: REM-165 (148)/II REFER TABLE /XXXX CPLG.
 CUSTOMER NAME: RATHI TRANSPOWER PVT LTD PUNE-411014
 SCALE: NTS
 AUTHORITY INITIALS: [Signature]
 DRAWN: [Signature]
 CHECKED: [Signature]
 APPROVED: [Signature]
 REF. NO.:

This drawing/ information/ design is the property of Rathi Transpower Pvt. Ltd. It is confidential & must not be made public or copied without prior written authorization & is subjected to recall at any time. Acceptance of this drawing constitutes full arrangements with these conditions.