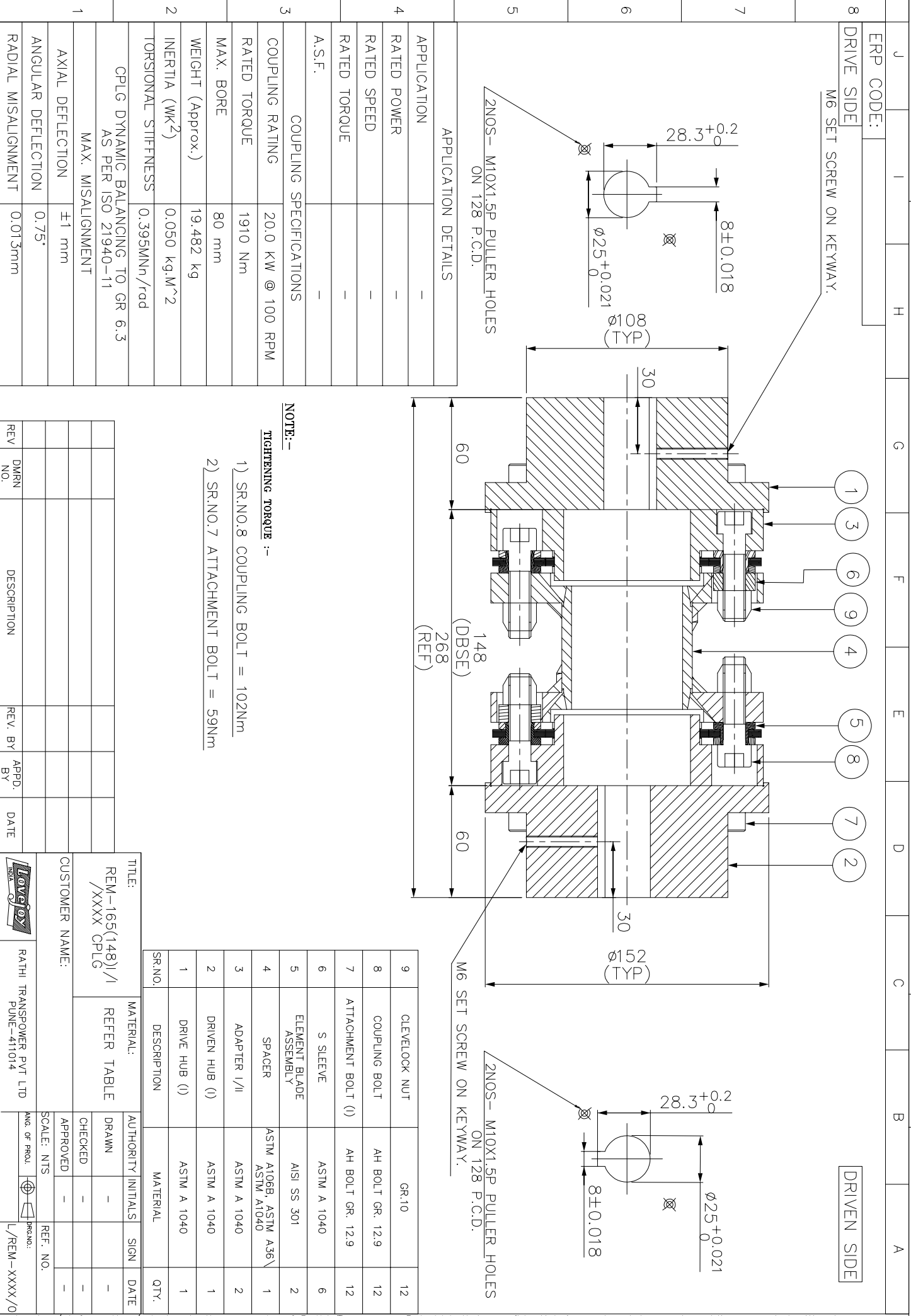


IF IN DOUBT, PLEASE ASK

DO NOT SCALE

ALL DIMENSIONS ARE IN mm



8	ERP CODE:	
8	DRIVE SIDE	M6 SET SCREW ON KEYWAY.
7		
6		
5		
4	APPLICATION DETAILS	
4	APPLICATION	-
4	RATED POWER	-
4	RATED SPEED	-
4	RATED TORQUE	-
4	A.S.F.	-
3	COUPLING SPECIFICATIONS	
3	COUPLING RATING	20.0 KW @ 100 RPM
3	RATED TORQUE	1910 Nm
3	MAX. BORE	80 mm
3	WEIGHT (Approx.)	19,482 kg
3	INERTIA (WK ²)	0.050 kg.M ²
3	TORSIONAL STIFFNESS	0.395MNn/rod
3	CPLG DYNAMIC BALANCING TO GR 6.3 AS PER ISO 21940-11	
3	MAX. MISALIGNMENT	
3	AXIAL DEFLECTION	±1 mm
3	ANGULAR DEFLECTION	0.75°
3	RADIAL MISALIGNMENT	0.013mm

NOTE:-
TIGHTENING TORQUE :-
 1) SR.NO.8 COUPLING BOLT = 102Nm
 2) SR.NO.7 ATTACHMENT BOLT = 59Nm

1	AXIAL DEFLECTION	±1 mm
1	ANGULAR DEFLECTION	0.75°
1	RADIAL MISALIGNMENT	0.013mm

REV	DMRN NO.	DESCRIPTION	REV. BY	APPD. BY	DATE

Lovalloy logo

TITLE: REM-165(148)/I /XXXX CPLG

CUSTOMER NAME: RATHI TRANSPOWER PVT LTD PUNE-411014

MATERIAL: REFER TABLE

AUTHORITY INITIALS: DRAWN, CHECKED, APPROVED

SCALE: NTS

ANG. OF PROJ. L/REM-XXXX/0