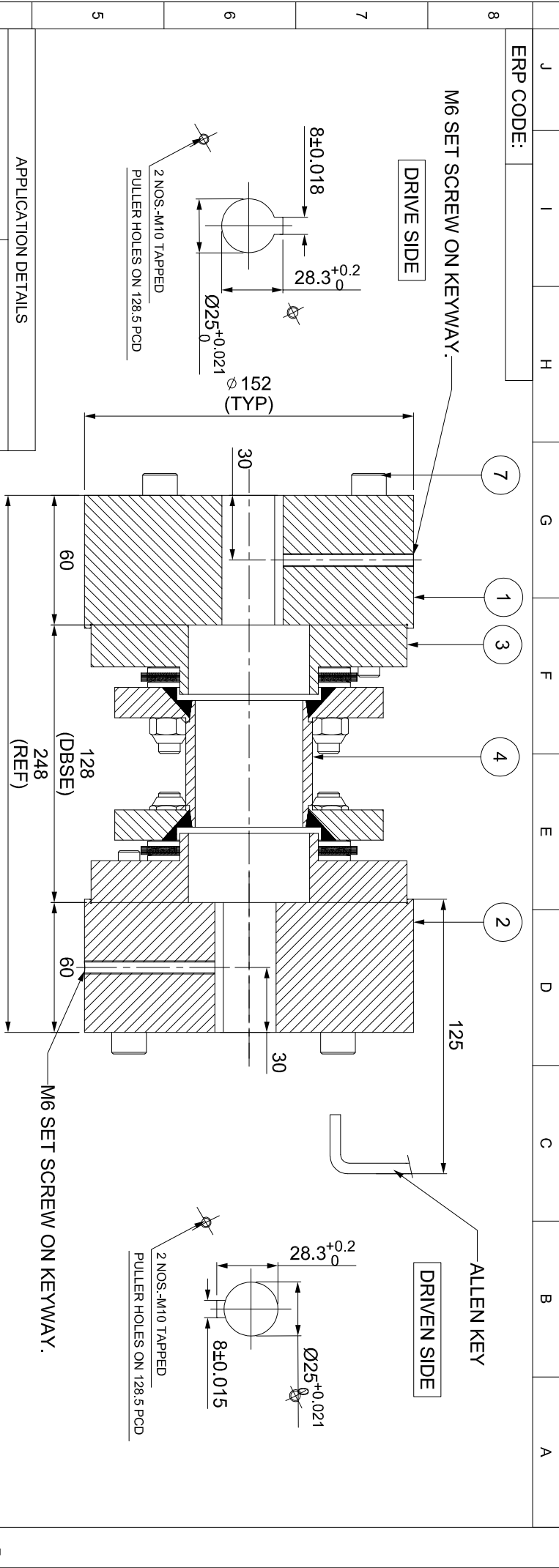


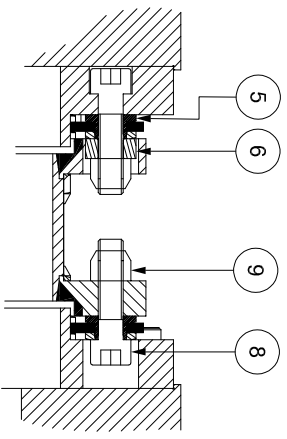
IF IN DOUBT, PLEASE ASK

DO NOT SCALE ALL DIMENSIONS ARE IN mm



APPLICATION DETAILS

APPLICATION	-
RATED POWER	-
RATED SPEED	-
RATED TORQUE	-
A.S.F.	-
COUPLING SPECIFICATIONS	
COUPLING RATING	12.6 KW @ 100 RPM
RATED TORQUE	1203 Nm
MAX. BORE	102 mm
WEIGHT (Approx.)	23.695 kg
INERTIA (WK ²)	0.068 kg.M ²
TORSIONAL STIFFNESS	0.232 MNm/rad
CPLG DYNAMIC BALANCING TO GR 6.3 AS PER ISO 21940-11	
MAX. MISALIGNMENT	
AXIAL DEFLECTION	± 1 mm
ANGULAR DEFLECTION	0.75°
RADIAL MISALIGNMENT	0.013mm



NOTE:-

- 1) SR.NO.8 COUPLING BOLT = 59 Nm.
- 2) SR.NO.7 ATTACHMENT BOLT = 59 Nm.

TIGHTENING TORQUE:-

REV.	DMRN NO.	DESCRIPTION	REV. BY	APPD. BY	DATE

SR.NO.	DESCRIPTION	MATERIAL	QTY.
9	CLEVELOCK NUT	GR. 10	12
8	COUPLING BOLT	AH GR. 12.9	12
7	ATTACHMENT BOLT (IV)	AH GR. 12.9	12
6	SLEEVE	ASTM A 1040	6
5	ELEMENT BLADE ASSEMBLY	AISI SS 301	2
4	SPACER	ASTM A106B, ASTM A36 \	1
3	ADAPTER II/IV	ASTM A 1040	2
2	DRIVEN HUB (IV)	ASTM A 1040	1
1	DRIVE HUB (IV)	ASTM A 1040	1

TITLE: REM-125(128) (IV/IV)
/XXXX CPLG

CUSTOMER NAME:

Logo **RATHI TRANSPower PVT LTD**
PUNE-411014

SCALE: 1:1

DRG.NO.: R/SD-XXXX/0

This drawing/ information/ design is the property of Rathi Transpower Pvt. Ltd. It is confidential & must not be made public or copied without prior written authorization & is subjected to recall at any time. Acceptance of this drawing constitutes full arrangements with these conditions.