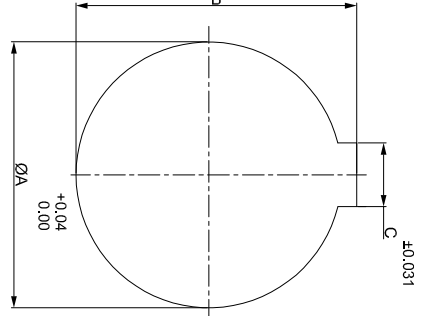
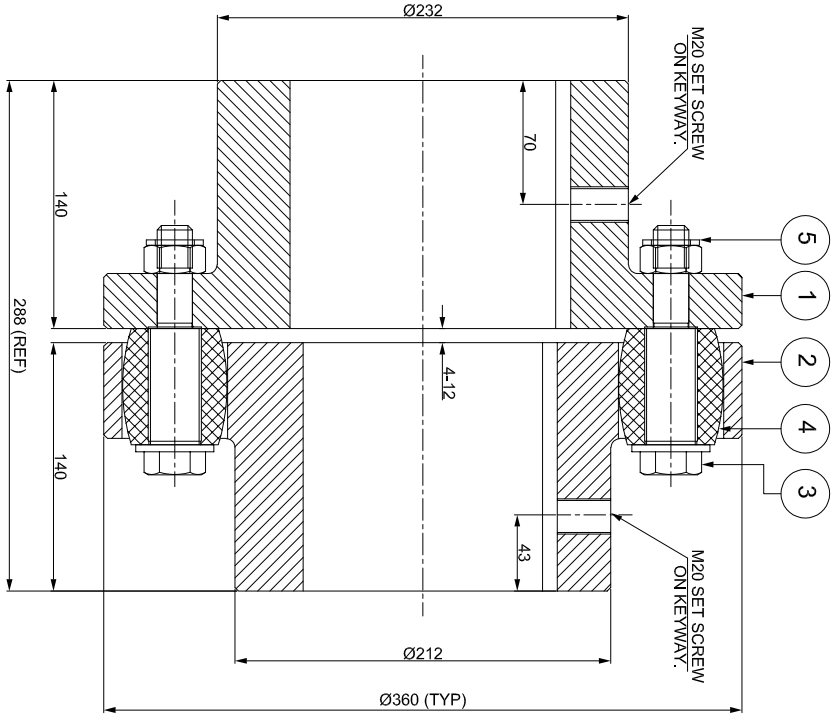
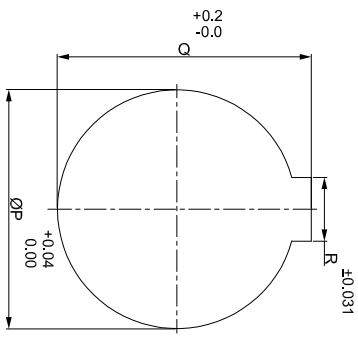


J	I	H	G	F	E	D	C	B	A
SAP CODE									

DRIVE SIDE



DRIVEN SIDE



NOTE :-  
1) TIGHTENING TORQUE OF THE BOLT (SR. NO.-3) = 193 Nm

APPLICATION DETAILS	
APPLICATION	-
RATED POWER	-
RATED SPEED	-
RATED TORQUE	-
A.S.F.	-
COUPLING SPECIFICATIONS	
COUPLING RATING	140 kW @ 100 RPM
CONTINUOUS TORQUE	13369 Nm
PEAK TORQUE	26738 Nm
SHORT CIRCUIT TORQUE	46792 Nm
MAX. BORE DRIVE SIDE	150 mm
MAX. BORE DRIVEN SIDE	135 mm
MAX. SPEED	1900 RPM
WEIGHT (Approx.)	100.8 kg
INERTIA (WK <sup>2</sup> )	1.40 kg.m <sup>2</sup>
CPLG. HUBS DYNAMIC BALANCING	GR. 6.3, ISO 21940-11
MAX. MISALIGNMENT	
AXIAL	± 4 mm
ANGULAR	1°
RADIAL	0.9 mm

REV/	DM/RN NO.	DESCRIPTION	REV. BY	APPD. BY	DATE

TITLE: RB-360-11 / XXXX CPLG		MATERIAL: REFER TABLE	
CUSTOMER NAME:		AUTHORITY/INITIALS: SIGN DATE	
5	NYLOCK NUT	GR. 8	11
4	BUSH	POLYURETHANE	11
3	PIN	EN-8D/15B25	11
2	DRIVEN HUB	CI - GR. FG-260	1
1	DRIVE HUB	CI - GR. FG-260	1

DRAWN		SCALE: NTS	
CHECKED		REF. NO.	
APPROVED			