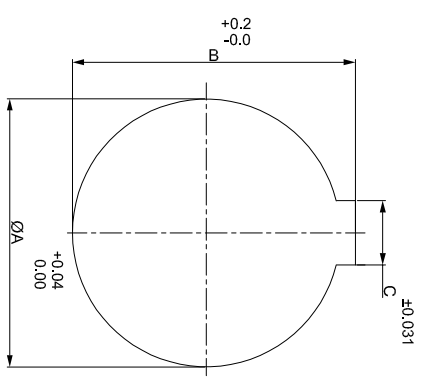
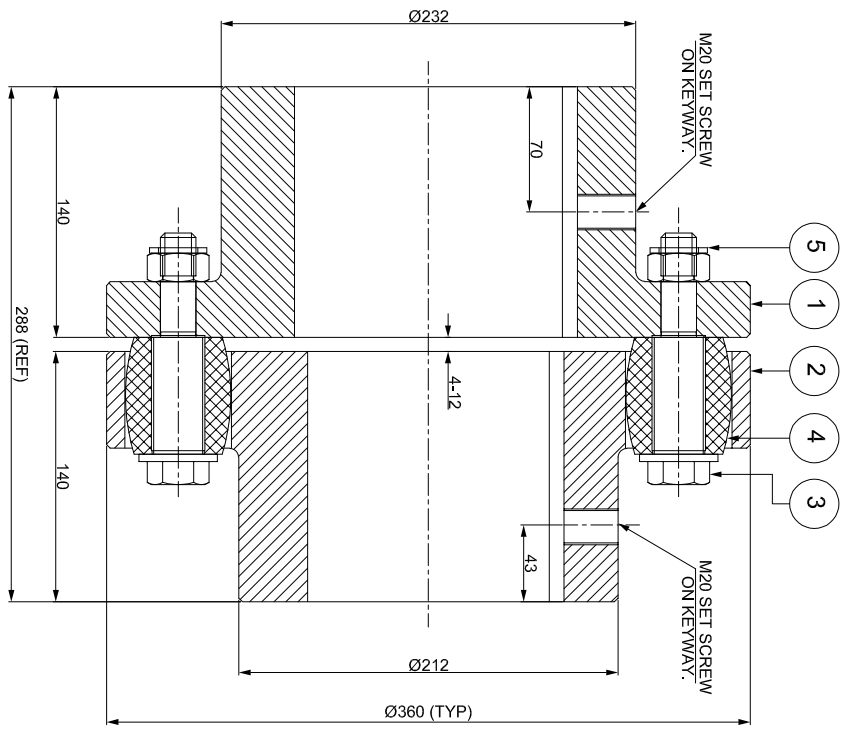
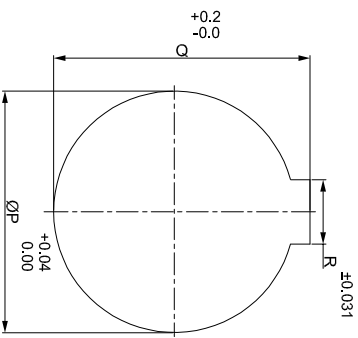


J	I	H	G	F	E	D	C	B	A
SAP CODE									

DRIVE SIDE



DRIVEN SIDE



NOTE:-
1) TIGHTENING TORQUE OF THE BOLT (SR. NO.-3) = 193 Nm

4	APPLICATION DETAILS	
	APPLICATION	-
	RATED POWER	-
	RATED SPEED	-
	RATED TORQUE	-
	A.S.F.	-
3	COUPLING SPECIFICATIONS	
	COUPLING RATING	93 kW @ 100 RPM
	CONTINUOUS TORQUE	8881 Nm
	PEAK TORQUE	17762 Nm
	SHORT CIRCUIT TORQUE	31083 Nm
2	MAX. BORE DRIVE SIDE	150 mm
	MAX. BORE DRIVEN SIDE	135 mm
	MAX. SPEED	1900 RPM
	WEIGHT (Approx.)	100.8 kg
	INERTIA (Wk ²)	1.40 kg.m ²
1	CPLG. HUBS DYNAMIC BALANCING	GR. 6.3, ISO 21940-11
	MAX. MISALIGNMENT	
	AXIAL	± 4 mm
	ANGULAR	1°
	RADIAL	0.9 mm

REV.	DMRN NO.	DESCRIPTION	REV. BY	APPD. BY	DATE

5	NYLOCK NUT	GR. 8	11
4	BUSH	NATURAL RUBBER	11
3	PIN	EN-8D/15B25	11
2	DRIVEN HUB	CI - GR. FG-260	1
1	DRIVE HUB	CI - GR. FG-260	1

TITLE:	RB-360-11 / XXXX CPLG	MATERIAL:	
CUSTOMER NAME:		REFER TABLE	
		DRAWN	-
		CHECKED	-
		APPROVED	-
		SCALE: NTS	REF. NO. -

AUTHORITY/INITIALS	SIGN	DATE
DRG. NO.:	L/RB-XXXXX/0	



RATHI TRANSPOWER PVT. LTD.
PUNE, INDIA

ANG. OF PROJ.  DRG. NO.: