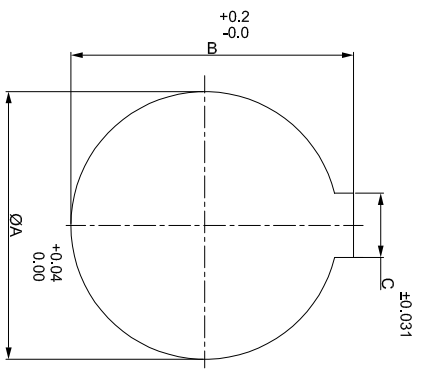
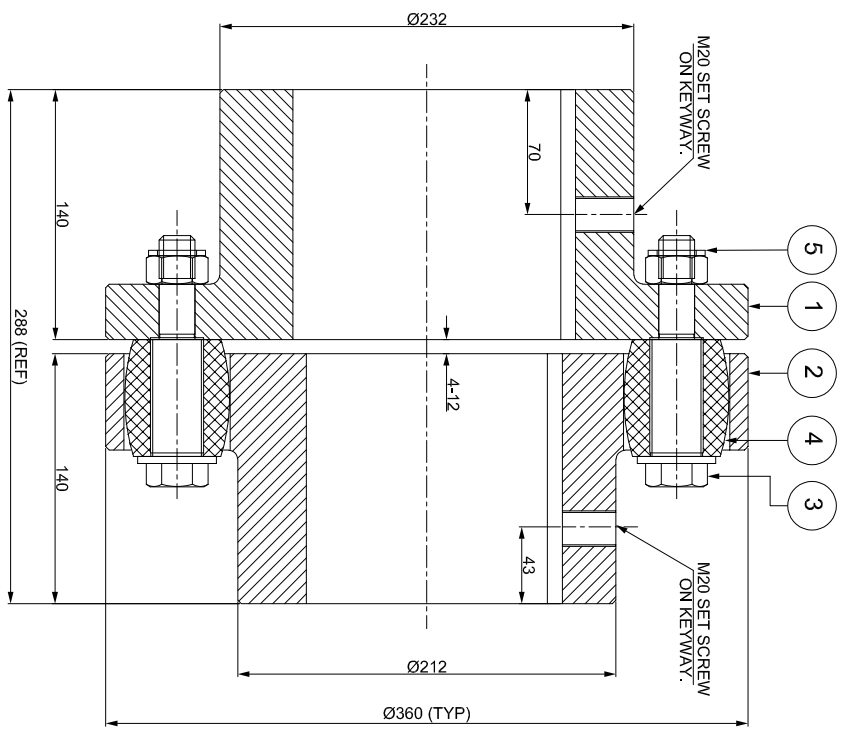
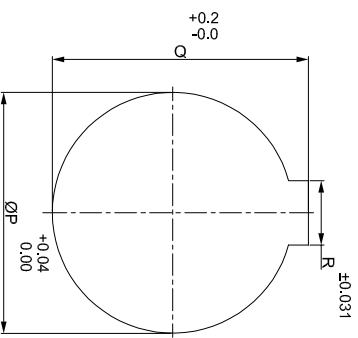


J	I	H	G	F	E	D	C	B	A
---	---	---	---	---	---	---	---	---	---

DRIVE SIDE



DRIVEN SIDE



NOTE :-
1) TIGHTENING TORQUE OF THE BOLT (SR. NO.-3) = 193 Nm

4 APPLICATION DETAILS	
APPLICATION	-
RATED POWER	-
RATED SPEED	-
RATED TORQUE	-
A.S.F.	-
3 COUPLING SPECIFICATIONS	
COUPLING RATING	233 kW @ 100 RPM
CONTINUOUS TORQUE	22250 Nm
PEAK TORQUE	44500 Nm
SHORT CIRCUIT TORQUE	77875 Nm
MAX. BORE DRIVE SIDE	150 mm
MAX. BORE DRIVEN SIDE	135 mm
MAX. SPEED	1900 RPM
WEIGHT (Approx.)	100.8 kg
INERTIA (WK ²)	1.40 kg.m ²
CPLG. HUBS DYNAMIC BALANCING	GR. 6.3, ISO 21940-11
1 MAX. MISALIGNMENT	
AXIAL	± 4 mm
ANGULAR	1°
RADIAL	0.9 mm

REV.	DMRN NO.	DESCRIPTION	REV. BY	APPD. BY	DATE

TITLE:	MATERIAL:	AUTHORITY/INITIALS	SIGN	DATE
RB-360-11 / XXXX CPLG				
5 NYLOCK NUT				
4 BUSH				
3 PIN				
2 DRIVEN HUB				
1 DRIVE HUB				
SR.NO.	DESCRIPTION	MATERIAL	QTY.	
5	NYLOCK NUT	GR. 8	11	
4	BUSH	H-TRANS	11	
3	PIN	EN-8D/15B25	11	
2	DRIVEN HUB	CI - GR. FG-260	1	
1	DRIVE HUB	CI - GR. FG-260	1	

CUSTOMER NAME:		SCALE: NTS		REF. NO.	
RATHI TRANSPower PVT. LTD.		ANG. OF PROJ.		DRG. NO.:	
PUNE, INDIA		L/RB-XXXX0		3 EN-F-112-Rev1	