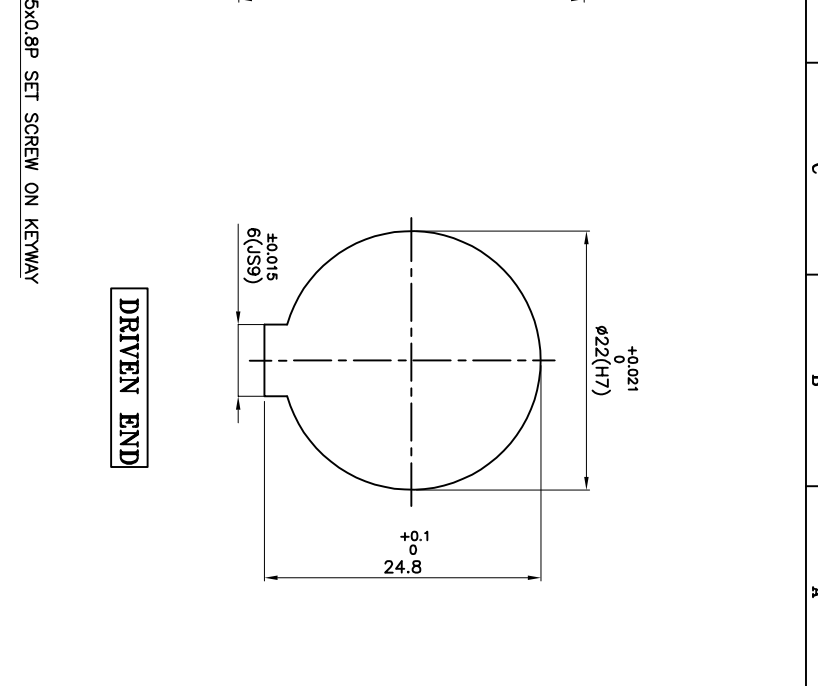


**DRIVE END**



**DRIVEN END**

APPLICATION DETAILS	
APPLICATION	-
RATED POWER	-
RATED SPEED	-
RATED TORQUE	-
A.S.F.	-
COUPLING SPECIFICATIONS	
COUPLING RATING	5.5 kW @ 100 RPM
RATED TORQUE	0.52 kNm.
PEAK TORQUE	1.05 kNm.
MAX. SPEED	4500 rpm.
MAX. BORE	65 mm
MAX. BORE	80 mm
WEIGHT (Approx.)	10.22 Kg
INERTIA (MK <sup>2</sup> )	0.0409 Kg m <sup>2</sup>
COUPLING HUBS DYNAMICALLY BALANCED TO GR. 6.3 AS PER ISO: 21940-11	
MAX. MISALIGNMENTS	
AXIAL DEFLECTION	± 2 mm.
ANGULAR DEFLECTION	1°
RADIAL DEFLECTION	0.4 mm

REV/DMRN NO.	DESCRIPTION	REV. BY	APPD. BY	DATE

S/N	SR NO	DESCRIPTION	MATERIAL	QTY
5	5	NYLOCK NUT	GR. 8	6
4	4	BUSH	NATURAL RUBBER	6
3	3	PIN	EN-8D/15B25	6
2	2	BUSH HALF	CI IS-210 G.F.G-260	1
1	1	PIN HALF	CI IS-210 G.F.G-260	1

TITLE: RB-162-6 /----- CPLG. MATERIAL: REFER TABLE

CUSTOMER NAME: RATHI TRANSPOWER PVT LTD PUNE 411014

APPROVED: \_\_\_\_\_

SCALE: NTS REF. No.: \_\_\_\_\_

DRG. No.: \_\_\_\_\_