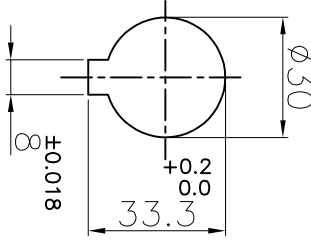


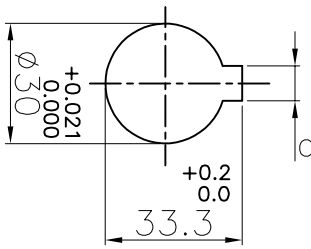
DRIVE END

+0.021
0.000



DRIVEN END

+0.021
0.000



M6 X 1P SET SCREW ON KEYWAY

M6 X 1P SET SCREW ON KEYWAY

APPLICATION DETAILS

APPLICATION	-
RATED POWER	- KW
RATED SPEED	- RPM
RATED TORQUE	- Nm
A.S.F.	-

COUPLING SPECIFICATIONS

COUPLING RATING	0.73 KW AT 100 RPM
RATED TORQUE	69.6 Nm
MAX. BORE	30 mm
WEIGHT (Approx.)	0.75 Kg
INERTIA (WK ²)	2.88x10 ⁻⁵ Kgm ²

CPLG HUBS DYNAMICALLY BALANCED TO GR.6.3 AS PER ISO 21940-11.

MAX. MISALIGNMENTS

AXIAL DEFLECTION	±1 mm
ANGULAR DEFLECTION	1°
RADIAL DEFLECTION	0.4 mm

57 E/ O/

SR NO	DESCRIPTION	MATERIAL	QTY.
1	HUB	CI GR.FG 260	2
2	SPIDER	POLYURETHANE	1

TITLE: **L-99/-CP1G REFER TABLE**

CUSTOMER NAME:

RAATHI TRANSPOWER PVT LTD
PUNE 411014

AUTHORITY	INITIALS	SIGN	DATE
DRAWN	-	-	-
CHECKED	-	-	-
APPROVED	-	-	-