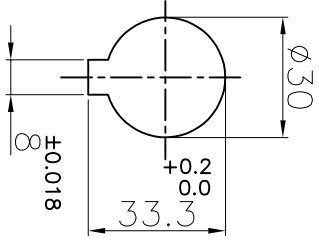


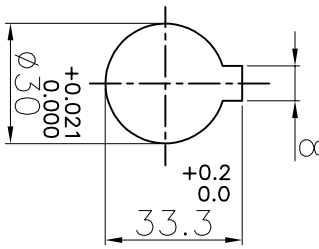
**DRIVE END**

+0.021  
0.000



**DRIVEN END**

+0.021  
0.000



M6 X 1P SET SCREW ON KEYWAY

M6 X 1P SET SCREW ON KEYWAY

**APPLICATION DETAILS**

APPLICATION	-
RATED POWER	- KW
RATED SPEED	- RPM
RATED TORQUE	- Nm
A.S.F.	-

**COUPLING SPECIFICATIONS**

COUPLING RATING	0.49 KW AT 100 RPM
RATED TORQUE	46.40 Nm
MAX. BORE	30 mm
WEIGHT (Approx.)	0.75 Kg
INERTIA (WK <sup>2</sup> )	2.88x10 <sup>-5</sup> Kgm <sup>2</sup>
CPLG. HUBS DYNAMICALLY BALANCED TO GR.6.3 AS PER ISO 21940-11.	

**MAX. MISALIGNMENTS**

AXIAL DEFLECTION	±1 mm
ANGULAR DEFLECTION	1°
RADIAL DEFLECTION	0.4 mm

SR NO	DESCRIPTION	MATERIAL	QTY.
1	HUB	CI GR.FG 260	2
2	SPIDER	NITRILE RUBBER	1

TITLE: **L-99/-CP1G REFER TABLE**

CUSTOMER NAME: **CP1G**

**RATHI TRANSPOWER PVT LTD**  
 PUNE 411014  
 DRG. No.: **-----/-----**  
 3 EN-F-112, REV.1

This drawing / information / design is the property of Rathi Transpower Pvt. Ltd. It is confidential & must not be made public or copied without prior written authorization & is subjected to recall at any time. Acceptance of this drawing constitutes full agreement with these conditions