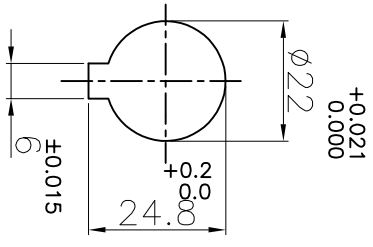
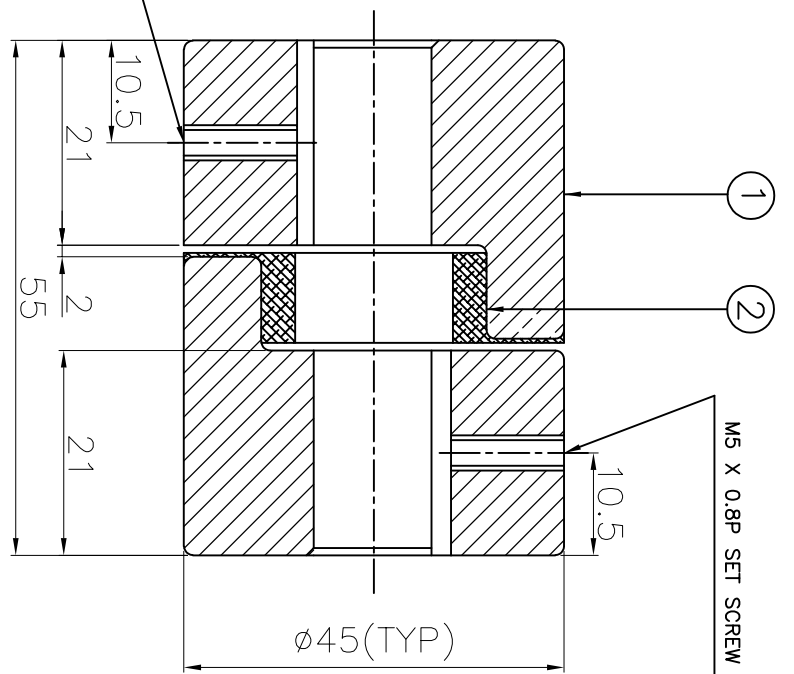
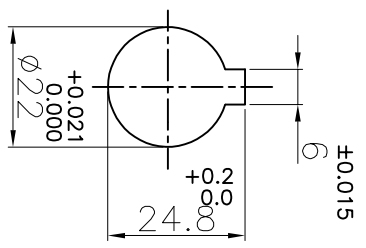


DRIVE END



M5 X 0.8P SET SCREW ON KEYWAY

DRIVEN END



APPLICATION DETAILS

APPLICATION	-
RATED POWER	- KW
RATED SPEED	- RPM
RATED TORQUE	- Nm
A.S.F.	-

COUPLING SPECIFICATIONS

COUPLING RATING	0.1 KW AT 100 RPM
RATED TORQUE	9.80 Nm
MAX. BORE	22 mm
WEIGHT (Approx.)	0.44 Kg
INERTIA (WK ²)	1.19x10 ⁻⁵ Kgm ²
CPLG HUBS DYNAMICALLY BALANCED TO GR.6.3 AS PER ISO 21940-11.	

MAX. MISALIGNMENTS

AXIAL DEFLECTION	±1 mm
ANGULAR DEFLECTION	1°
RADIAL DEFLECTION	0.4 mm

SR NO	DESCRIPTION	MATERIAL	QTY.
1	HUB	SINTERED IRON	2
2	SPIDER	NITRILE RUBBER	1

TITLE: **L-75/-** CP1G REFER TABLE

CUSTOMER NAME: -

AUTHORITY	INITIALS	SIGN	DATE
DRAWN	-	-	-
CHECKED	-	-	-
APPROVED	-	-	-

RATHI TRANSPOWER PVT LTD
PUNE 411014

DRG. No.:
3 EN-F-112, REV.1