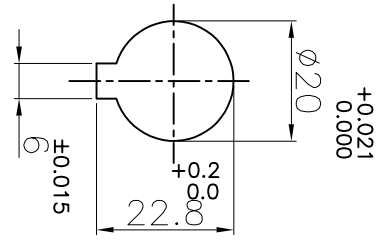
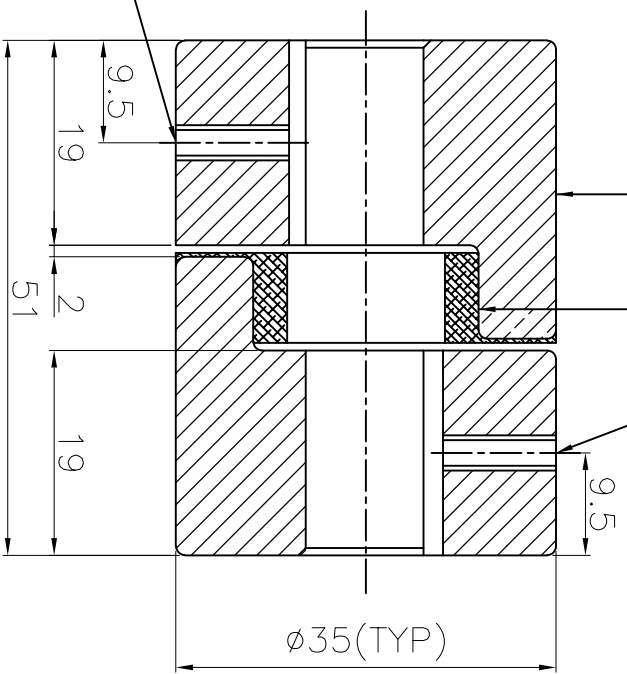


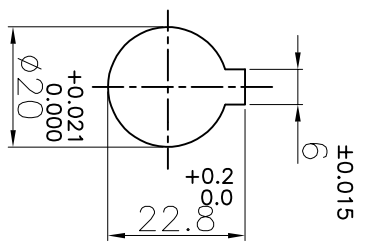
DRIVE END



1 2



DRIVEN END



APPLICATION DETAILS

APPLICATION	-
RATED POWER	- KW
RATED SPEED	- RPM
RATED TORQUE	- Nm
A.S.F.	-

COUPLING SPECIFICATIONS

COUPLING RATING	0.08 KW AT 100 RPM
RATED TORQUE	7.4 Nm
MAX. BORE	20 mm
WEIGHT (Approx.)	0.26 Kg
INERTIA (WK ²)	4.67x10 ⁻⁶ Kgm ²
CPLG HUBS DYNAMICALLY BALANCED TO GR.6.3 AS PER ISO 21940-11.	

MAX. MISALIGNMENTS

AXIAL DEFLECTION	± 1 mm
ANGULAR DEFLECTION	1°
RADIAL DEFLECTION	0.4 mm

SR NO	DESCRIPTION	MATERIAL	QTY.
2	SPIDER	POLYURETHANE	1
1	HUB	SINTERED IRON	2

TITLE: L-70/- ---- CPLG REFER TABLE

CUSTOMER NAME:


RATHI TRANSPOWER PVT LTD
 PUNE 411014
 DRG. No.:
 3 EN-F-112, REV.1

AUTHORITY	INITIALS	SIGN	DATE
DRAWN	-	-	-
CHECKED	-	-	-
APPROVED	-	-	-
SCALE	REF. No.:		