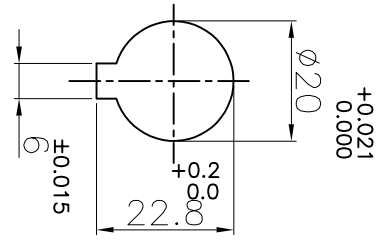
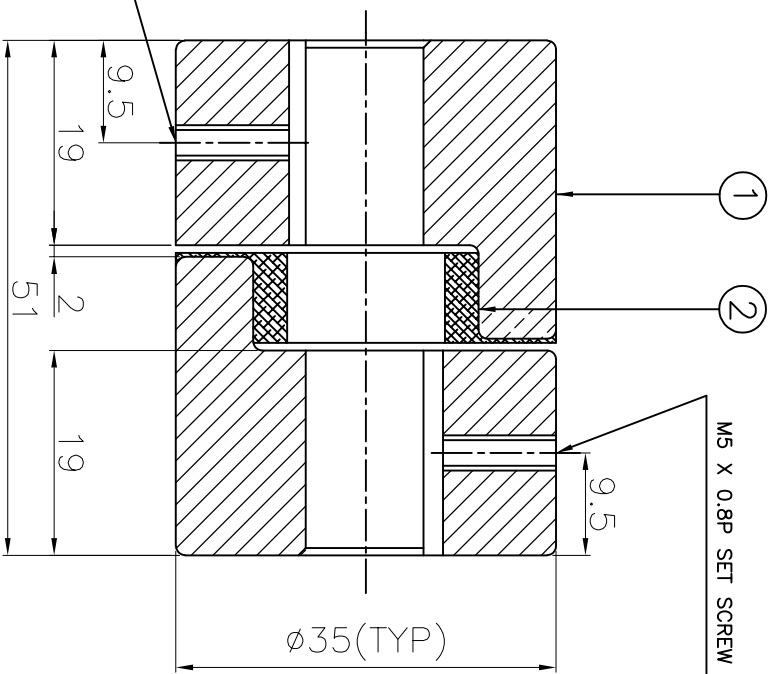


DRIVE END

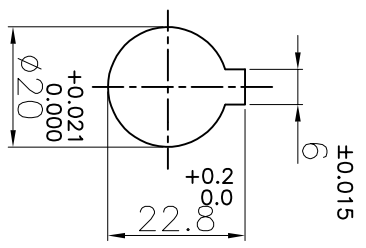


M5 X 0.8P SET SCREW ON KEYWAY

M5 X 0.8P SET SCREW ON KEYWAY



DRIVEN END



APPLICATION DETAILS

APPLICATION	-
RATED POWER	- KW
RATED SPEED	- RPM
RATED TORQUE	- Nm
A.S.F.	-

COUPLING SPECIFICATIONS

COUPLING RATING	0.05 KW AT 100 RPM
RATED TORQUE	4.90 Nm
MAX. BORE	20 mm
WEIGHT (Approx.)	0.26 Kg
INERTIA (WK^2)	4.67×10^{-6} Kgm^2
CPLG HUBS DYNAMICALLY BALANCED TO GR.6.3 AS PER ISO 21940-11.	

MAX. MISALIGNMENTS

AXIAL DEFLECTION	± 1 mm
ANGULAR DEFLECTION	1'
RADIAL DEFLECTION	0.4 mm

SR NO	DESCRIPTION	MATERIAL	QTY.
1	HUB	SINTERED IRON	2
2	SPIDER	NITRILE RUBBER	1

TITLE: **L-70/-CP1G REFER TABLE**

CUSTOMER NAME: **CP1G**

DRG. No.: **RATHI TRANSPOWER PVT LTD PUNE 411014**

REV/CHGR NO.	DESCRIPTION	REV. BY	DATE

This drawing / information / design is the property of Rathi Transpower Pvt. Ltd. It is confidential & must not be made public or copied without prior written authorization & is subjected to recall at any time. Acceptance of this drawing constitutes full agreement with these conditions