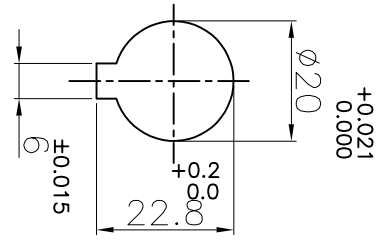
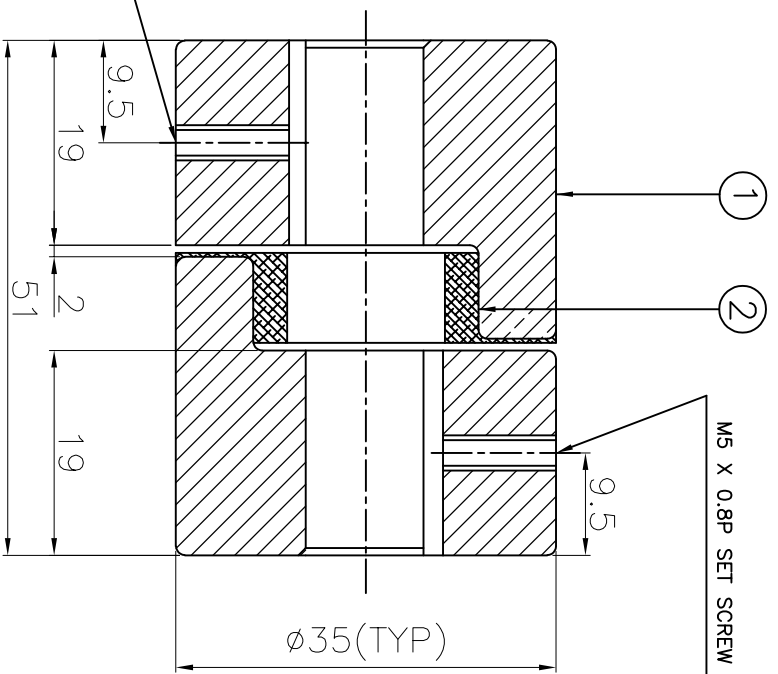


DRIVE END

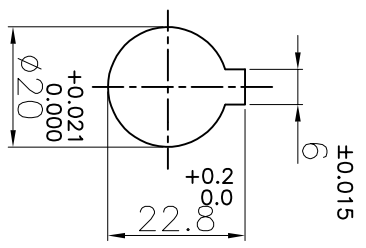


M5 X 0.8P SET SCREW ON KEYWAY



M5 X 0.8P SET SCREW ON KEYWAY

DRIVEN END



APPLICATION DETAILS

APPLICATION	-
RATED POWER	- KW
RATED SPEED	- RPM
RATED TORQUE	- Nm
A.S.F.	-

COUPLING SPECIFICATIONS

COUPLING RATING	0.13 KW AT 100 RPM
RATED TORQUE	12.3 Nm
MAX. BORE	20 mm
WEIGHT (Approx.)	0.26 Kg
INERTIA (WK ²)	4.67x10 ⁻⁶ Kgm ²
CPJG HUBS DYNAMICALLY BALANCED TO GR.6.3 AS PER ISO 21940-11.	

MAX. MISALIGNMENTS

AXIAL DEFLECTION	±1 mm
ANGULAR DEFLECTION	1°
RADIAL DEFLECTION	0.4 mm

SR NO	DESCRIPTION	MATERIAL	QTY.
1	HUB	SINTERED IRON	2
2	SPIDER	H TRANS	1

TITLE: L-70/-CPJG REFER TABLE

CUSTOMER NAME: CPJG

REV/CHGR NO.	DESCRIPTION	REV. BY	DATE



RATHI TRANSPOWER PVT LTD
PUNE 411014

DRG. No.:
SCALE: REF. No.: