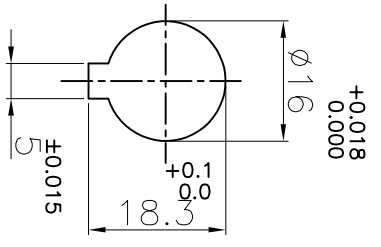
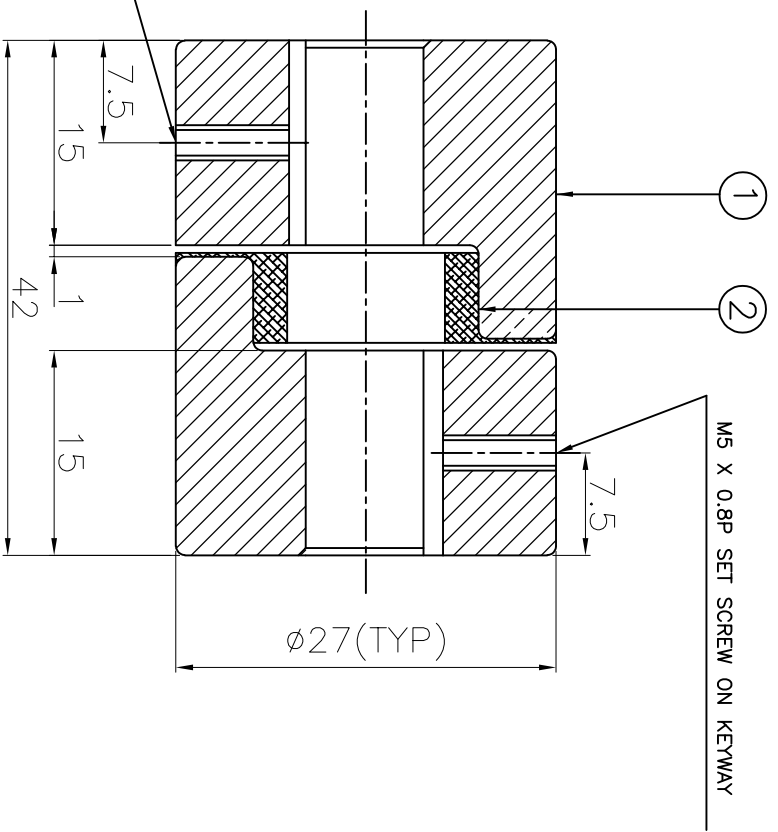
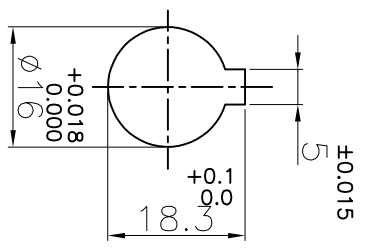


DRIVE END



M5 X 0.8P SET SCREW ON KEYWAY

DRIVEN END



APPLICATION DETAILS

APPLICATION	-
RATED POWER	- KW
RATED SPEED	- RPM
RATED TORQUE	- Nm
A.S.F.	-

COUPLING SPECIFICATIONS

COUPLING RATING	0.04 KW AT 100 RPM
RATED TORQUE	4.2 Nm
MAX. BORE	16 mm
WEIGHT (Approx.)	0.12 Kg
INERTIA (WK^2)	$1.21 \times 10^{-6} \text{ Kg m}^2$

CPLG. HUBS DYNAMICALLY BALANCED TO GR.6.3 AS PER ISO 21940-11.

MAX. MISALIGNMENTS

AXIAL DEFLECTION	± 0.5 mm
ANGULAR DEFLECTION	1°
RADIAL DEFLECTION	0.4 mm

SER NO	DESCRIPTION	MATERIAL	QTY.
2	SPIDER	POLYURETHANE	1
1	HUB	SINTERED IRON	2

TITLE: **L-50/----- CPLG REFER TABLE**

CUSTOMER NAME:

AUTHORITY	INITIALS	SIGN	DATE
DRAWN	-	-	-
CHECKED	-	-	-
APPROVED	-	-	-

RATHI TRANSPOWER PVT LTD
 PUNE 411014
 DRG. No.: -----
 REF. No.: -----

This drawing / information / design is the property of Rathi Transpower Pvt. Ltd. It is confidential & must not be made public or copied without prior written authorization & is subjected to recall at any time. Acceptance of this drawing constitutes full agreement with these conditions