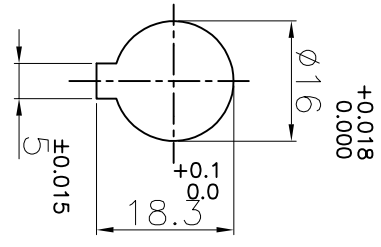
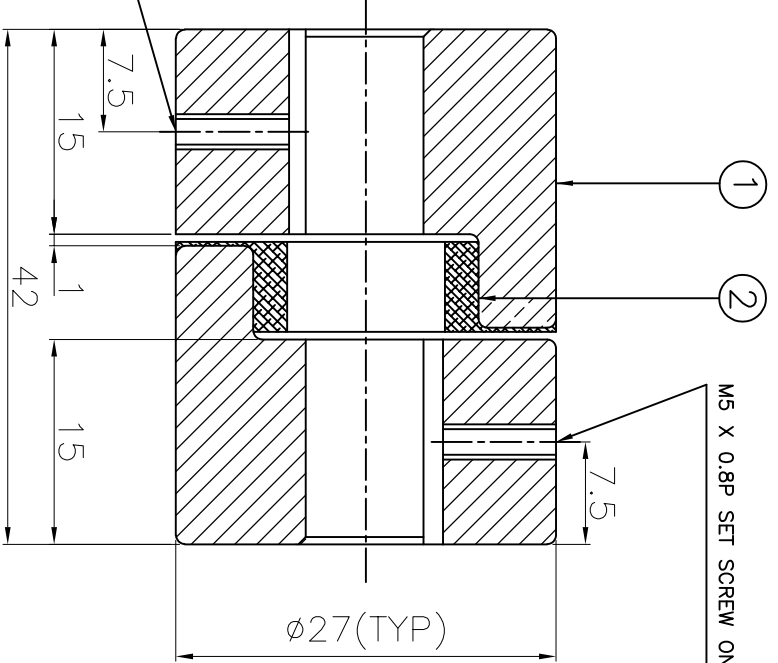


DRIVE END

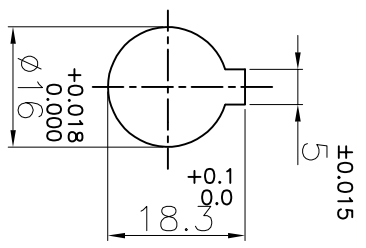


M5 X 0.8P SET SCREW ON KEYWAY



M5 X 0.8P SET SCREW ON KEYWAY

DRIVEN END



APPLICATION DETAILS

APPLICATION	-
RATED POWER	- KW
RATED SPEED	- RPM
RATED TORQUE	- Nm
A.S.F.	-

COUPLING SPECIFICATIONS

COUPLING RATING	0.03 KW AT 100 RPM
RATED TORQUE	2.80 Nm
MAX. BORE	16 mm
WEIGHT (Approx.)	0.12 Kg
INERTIA (WK ²)	1.21x10 ⁻⁶ Kgm ²
CPLG. HUBS DYNAMICALLY BALANCED TO GR.6.3 AS PER ISO 21940-11.	

MAX. MISALIGNMENTS

AXIAL DEFLECTION	±0.5 mm
ANGULAR DEFLECTION	1°
RADIAL DEFLECTION	0.4 mm

SER NO	DESCRIPTION	MATERIAL	QTY.
1	HUB	SINTERED IRON	2
2	SPIDER	NITRILE RUBBER	1

TITLE: **L-50/-** CPLG REFER TABLE

CUSTOMER NAME:

RATHI TRANSPOWER PVT LTD
PUNE 411014

AUTHORITY	INITIALS	SIGN	DATE
DRAWN	-	-	-
CHECKED	-	-	-
APPROVED	-	-	-

This drawing / information / design is the property of Rathi Transpower Pvt. Ltd. It is confidential & must not be made public or copied without prior written authorization & is subjected to recall at any time. Acceptance of this drawing constitutes full agreement with these conditions