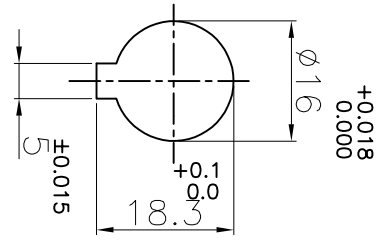
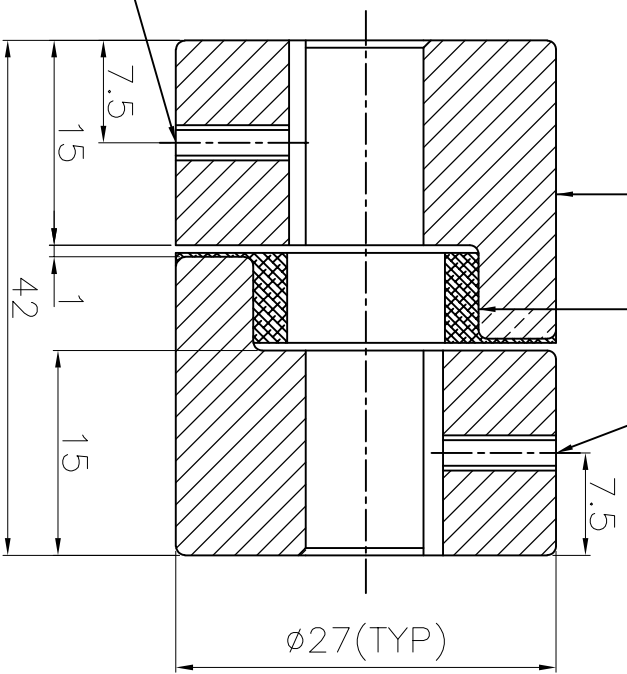


DRIVE END



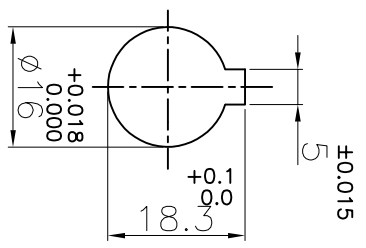
M5 X 0.8P SET SCREW ON KEYWAY

1 2



M5 X 0.8P SET SCREW ON KEYWAY

DRIVEN END



APPLICATION DETAILS

APPLICATION	-
RATED POWER	- KW
RATED SPEED	- RPM
RATED TORQUE	- Nm
A.S.F.	-

COUPLING SPECIFICATIONS

COUPLING RATING	0.07 KW AT 100 RPM
RATED TORQUE	7.0 Nm
MAX. BORE	16 mm
WEIGHT (Approx.)	0.12 Kg
INERTIA (WK ²)	1.21x10 ⁻⁶ Kgm ²
CPLG HUBS DYNAMICALLY BALANCED TO GR.6.3 AS PER ISO 21940-11.	

MAX. MISALIGNMENTS

AXIAL DEFLECTION	±0.5 mm
ANGULAR DEFLECTION	1°
RADIAL DEFLECTION	0.4 mm

SR NO	DESCRIPTION	MATERIAL	QTY.
2	SPIDER	H TRANS	1
1	HUB	SINTERED IRON	2

TITLE: **L-50/-** CP1G REFER TABLE

CUSTOMER NAME:

AUTHORITY	INITIALS	SIGN	DATE
DRAWN	-	-	-
CHECKED	-	-	-
APPROVED	-	-	-



RATHI TRANSPOWER PVT LTD
PUNE 411014

DRG. No.:
3 EN-F-112, REV.1