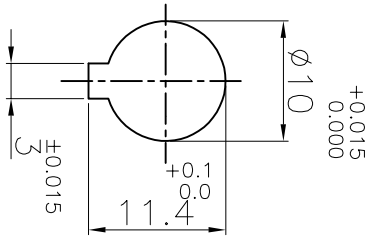
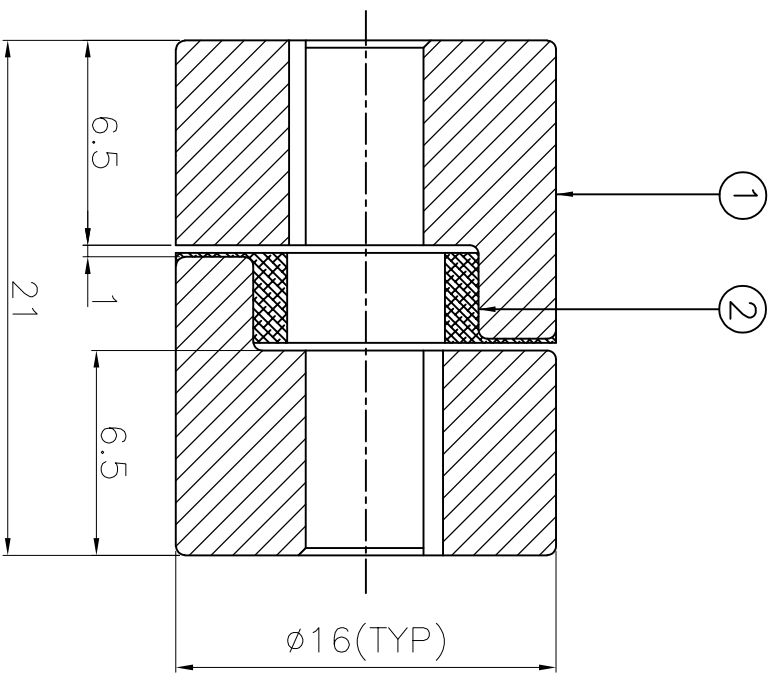
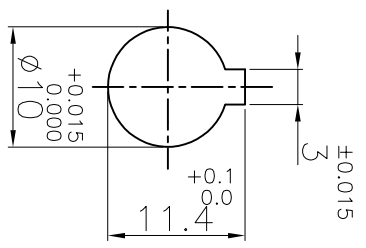


DRIVE END



DRIVEN END



APPLICATION DETAILS

APPLICATION	-
RATED POWER	- KW
RATED SPEED	- RPM
RATED TORQUE	- Nm
A.S.F.	-

COUPLING SPECIFICATIONS

COUPLING RATING	0.01 KW AT 100 RPM
RATED TORQUE	1.0 Nm
MAX. BORE	10 mm
WEIGHT (Approx.)	0.02 Kg
INERTIA (WK ²)	7.28x10 ⁻⁸ Kgm ²

CPLG HUBS DYNAMICALLY BALANCED TO GR.6.3 AS PER ISO 21940-11.

MAX. MISALIGNMENTS

AXIAL DEFLECTION	±0.5 mm
ANGULAR DEFLECTION	1°
RADIAL DEFLECTION	0.4 mm

SR NO	DESCRIPTION	MATERIAL	QTY.
1	HUB	SINTERED IRON	2
2	SPIDER	H TRANS	1

TITLE: L-35/------ CPLG REFER TABLE

CUSTOMER NAME:


RATHI TRANSPOWER PVT LTD
 PUNE 411014
 DRG. No.: ----- / --
 3 EN-F-112, REV.1

REV/ DMRN NO.	DESCRIPTION	REV. BY	DATE