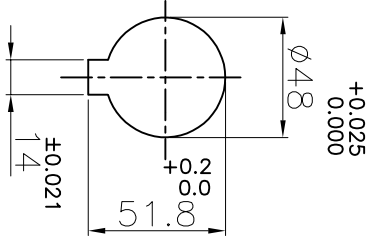
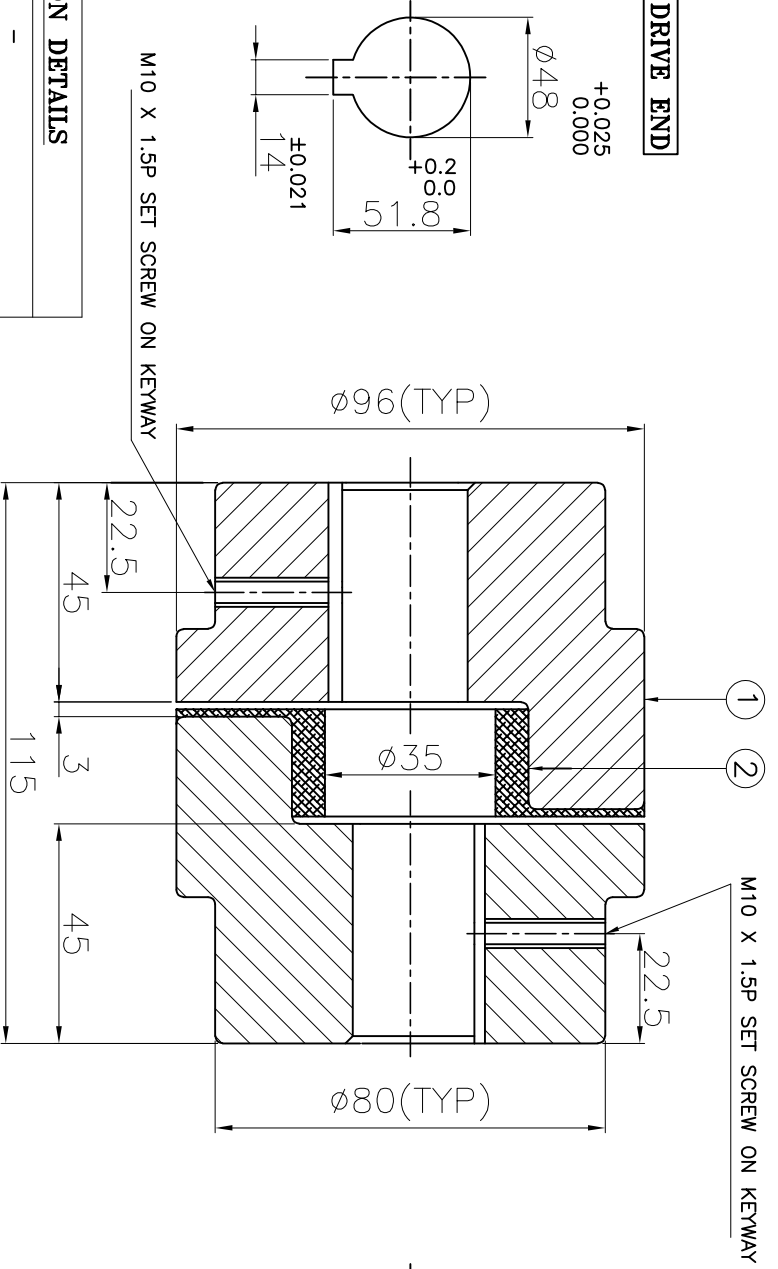
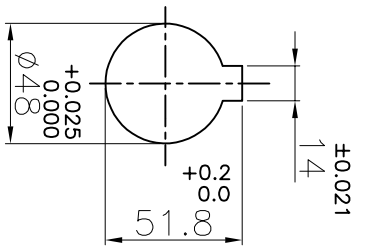


**DRIVE END**



**DRIVEN END**



**APPLICATION DETAILS**

APPLICATION	-
RATED POWER	- KW
RATED SPEED	- RPM
RATED TORQUE	- Nm
A.S.F.	-

**COUPLING SPECIFICATIONS**

COUPLING RATING	3.7 KW AT 100 RPM
RATED TORQUE	352.5 Nm
MAX. BORE	48 mm
WEIGHT (Approx.)	3.90 Kg
INERTIA (WK <sup>2</sup> )	4.19x10 <sup>-4</sup> Kgm <sup>2</sup>
CPLG. HUBS DYNAMICALLY BALANCED TO GR.6.3 AS PER ISO 21940-II	

**MAX. MISALIGNMENTS**

AXIAL DEFLECTION	±1.5 mm
ANGULAR DEFLECTION	1°
RADIAL DEFLECTION	0.4 mm

SR NO	DESCRIPTION	MATERIAL	QTY.
1	HUB	CI GR FG 260	2
2	SPIDER	H TRANS	1

TITLE: **L-150/------ CPLG REFER TABLE**

CUSTOMER NAME:



**RATHI TRANSPOWER PVT LTD**  
PUNE 411014

DRG. No.: -----

AUTHORITY	INITIALS	SIGN	DATE
DRAWN	-	-	-
CHECKED	-	-	-
APPROVED	-	-	-
SCALE	REF. No.:		

This drawing / information / design is the property of Rathi Transpower Pvt. Ltd. It is confidential & must not be made public or copied without prior written authorization & is subjected to recall at any time. Acceptance of this drawing constitutes full agreement with these conditions