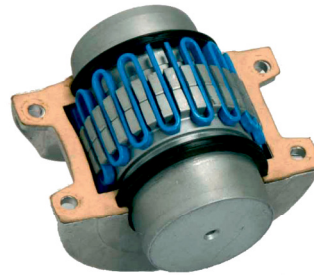


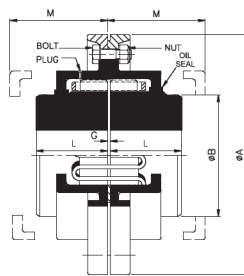
GRID-FLEX COUPLINGS TYPE LGF



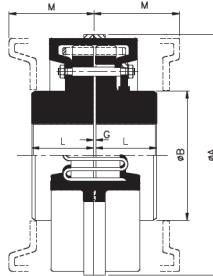
VERTICAL SPLIT COVERS



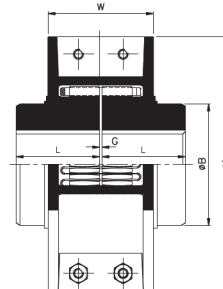
HORIZONTAL SPLIT COVERS



(SIZE 105 TO 425)



(SIZE 432 & 492)



(SIZE 105 TO 492)

TYPE V

TYPE H

Lovejoy Grid-flex couplings are lubricated, having high torque capacity like gear couplings & with torsional flexibility of an Elastomer couplings. Grid-flex offers the simplest, most cost effective solution for moderate to high torque application.

TECHNICAL DATA

Size	kW at 100 rpm	Max. Speed rpm		Bore		Dimensions						Weight kg		
		V	H	Pilot ± 5	Max.	\O A		\O B	G	L	W	M	V	H
						V	H							
LGF-105	0.45	5800	3600	10	29	105	104	45	0.80	38.0	57	53	3	3
LGF-120	0.70	5000	3350	12	38	120	120	58	0.80	38.0	65	53	4	4
LGF-144	1.50	4500	3350	16	42	144	127	62	0.80	44.5	65	60	5	5
LGF-172	2.20	3500	2600	16	58	172	159	87	0.80	51.0	66	60	9	8
LGF-190	3.40	3300	2400	16	58	190	178	85	0.80	51.0	85	80	11	13
LGF-197	4.90	3100	2200	16	65	197	190	100	0.80	57.0	85	80	16	17
LGF-222	7.00	2600	1900	25	80	222	222	120	0.80	63.5	87	80	20	19
LGF-254	9.40	2300	1700	25	95	254	245	143	0.80	70.0	87	81	27	27
LGF-276	13.80	2000	1600	25	110	276	267	165	0.80	89.0	87	81	43	39
LGF-295	26.50	1900	1500	38	104	295	276	155	1.60	102.0	138	129	54	47
LGF-324	33.90	1800	1300	50	124	324	324	187	1.60	101.5	157	148	63	67
LGF-336	48.90	1600	1300	50	124	336	336	184	1.60	101.5	157	148	72	74
LGF-375	67.50	1400	1100	50	148	375	381	222	1.60	114.0	159	148	104	108
LGF-425	93.60	1200	1000	50	170	425	425	254	1.60	127.0	160	148	149	149
LGF-432	179.00	1200	800	75	* 157	432	501	#239	3.20	140.0	180	180	180	234
LGF-492	261.00	1100	700	85	* 173	492	552	#267	3.20	152.5	180	180	216	318

Note :-

- * Max. Bore for 'H' Type LGF - 432 = 202 mm & for LGF - 492 = 234 mm.
- # Dimension B for H type LGF - 432 = 302 mm & for LGF - 492 = 349 mm.
- All dimensions are in mm unless otherwise specified.
- For vertical installation contact RATHI.
- Speeds specified are with standard material of construction.
- Weights specified are with max. bore.
- For Inertia, torsional stiffness and for higher sizes consult manufacturer.
- Consult RATHI for Max Bore with Square Key.