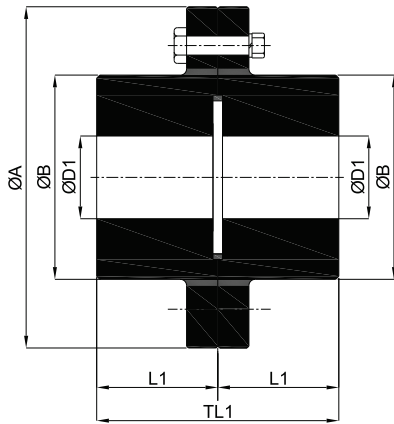
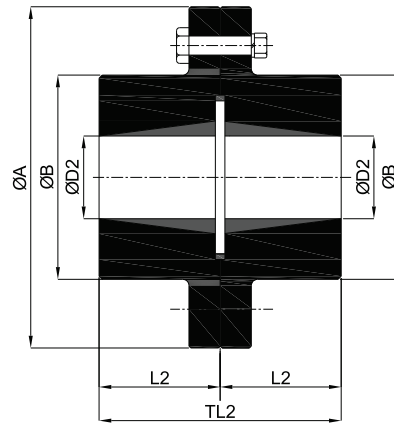


RIGID COUPLINGS TYPE RR / RRT



TYPE - RR



TYPE - RRT

Rathi Rigid Couplings are robust, simple & ideal for exactly aligned shafts. They are torsionally stiff & backlash free.

TECHNICAL DATA

Coupling Type	Size	"kW at 100 RPM"	Torque Nm	Max. Speed RPM	RR		RRT			Bush Size	ØA	ØB	L1	TL1	L2	TL2	Wt. in Kg. (Min. Bore)		M.I. (WR ²) Kg. m ² (Min. Bore)	
					ØD1	ØD2	Min. Bore	Max. Bore #	Max. (SHALLOW KEYWAY)								RR	RRT	RR	RRT
RR	020	1.06	101	6500	12	22	-	-	-	-	89	35	33	66	-	-	1.6	-	0.002	-
RR/ RRT	030	2.30	220	5470	12	32	10	22	25	1008	127	51	41	82	23	46	3.2	2.8	0.004	0.004
	038	4.80	458	5260	15	40	10	25	28	1108	132	64	48	96	23	46	4.1	3.6	0.006	0.006
	042	6.40	611	4750	15	44	12	30	-	1215	146	70	56	112	38.1	76.2	5.6	5	0.008	0.008
	048	9.63	920	4050	21	52	16	38	42	1615	171	81	61	122	38	76	9.3	8.3	0.024	0.023
	058	16.90	1614	3600	21	62	14	45	-	2017	193	97	68	136	47	94	12	10.7	0.04	0.038
	070	29.90	2855	3220	21	74	16	60	-	2525	216	117	76	152	63.5	127	18	16	0.07	0.067
	075	36.50	3485	2730	28	80	16	60	-	2525	254	127	88	176	68	136	32	30	0.18	0.177
	085	53.40	5099	2480	28	92	24	75	-	3030	279	147	100	200	76	152	44	39.3	0.28	0.260
	105	100.0	9549	2100	34	114	35	90	-	3535	330	180	117	234	89	178	69	61	0.59	0.56
	120	149.0	14228	1880	61	130	40	100	-	4040	370	206	132	264	102	204	109	97	1.42	1.36
	135	213.0	20340	1660	67	144	55	110	-	4545	419	230	147	294	114.3	228.6	145	129	2.35	2.25
150	292.0	27884	1520	82	160	70	125	-	5050	457	256	165	330	127	254	186	166	3.48	3.33	
RR	170	470.0	44882	1300	96	184	-	-	-	533	292	188	376	-	-	350	-	9.52	-	
	190	575.0	54908	1170	122	206	-	-	-	597	330	211	422	-	-	475	-	14.2	-	
	215	750.0	71620	1050	135	230	-	-	-	660	368	237	474	-	-	640	-	22.8	-	

- # Available only with taper bore, without taper bush.
- For vertical installation contact RATHI.
- Consult RATHI for Max Bore with Square Key.