

APPLICATION DETAILS	
APPLICATION	-
RATED POWER	-
RATED SPEED	-
RATED TORQUE	-
A.S.F.	-
COUPLING SPECIFICATIONS	
COUPLING RATING	1 kW @ 100 RPM
CONTINUOUS TORQUE	95 Nm
PEAK TORQUE	190 Nm
SHORT CIRCUIT TORQUE	333 Nm
MAX. BORE	25 mm
MAX. SPEED	7500 RPM
WEIGHT (Approx.)	1.770 kg
INERTIA (WK ²)	0.001 kg.m ²
GD ²	0.004 kg.m ²
TORSIONAL STIFFNESS	
CPLG DYNAMIC BALANCING	0.028 Mkn/rad
MAX. MISALIGNMENT	
AXIAL	± 1 mm
ANGULAR	0.75° PER STACK
RADIAL	0.7 mm

REV.	DMRN NO.	DESCRIPTION	REV. BY	APPD. BY	DATE

SR.NO.	DESCRIPTION	MATERIAL	QTY.
8	CLEVELOCK NUT	GR. 10	12
7	COUPLING BOLT	AH BOLT GR. 12.9 (ASTM 574M)	12
6	SLEEVE (II)	ASTM A 1040	6
5	SLEEVE (I)	ASTM A 1040	6
4	ELEMENT BLADE ASSEMBLY	ASTM A 1040	2
3	SPACER	ASTM A 1068, ASTM A-36 / ASTM A 1040	1
2	DRIVEN HUB (II)	ASTM A 1040	1
1	DRIVE HUB (II)	ASTM A 1040	1

TITLE: RLM-10(54)III /XXXX CPLG

CUSTOMER NAME: [Blank]

MATERIAL: [Blank]

REFER TABLE: [Blank]

AUTHORITY/INITIALS: [Blank]

SIGN: [Blank]

DATE: [Blank]

DRAWN: [Blank]

CHECKED: [Blank]

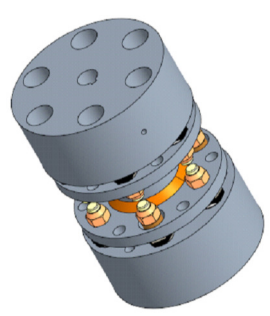
APPROVED: [Blank]

SCALE: NTS

REF. NO.: [Blank]

ANG. OF PROJ.: [Blank]

DRG. NO.: L/RLM-XXXXX0



This drawing/ information/ design is the property of Rathi Transpower Pvt. Ltd. It is confidential & must not be made public or copied without prior written authorization & is subjected to recall at any time. Acceptance of this drawing constitutes full arrangements with these conditions.