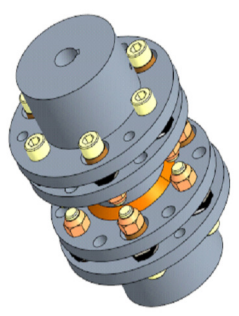
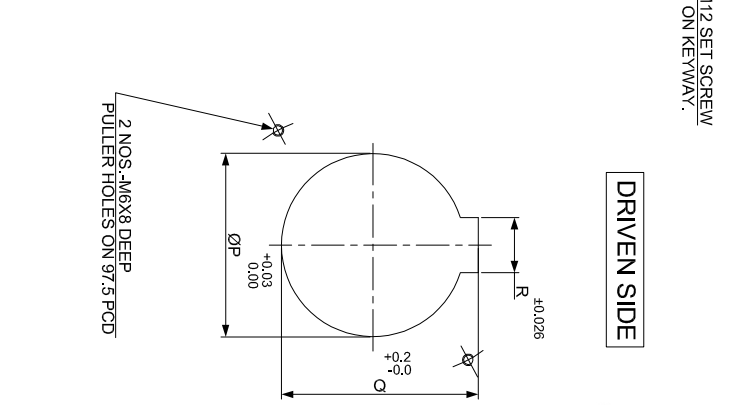
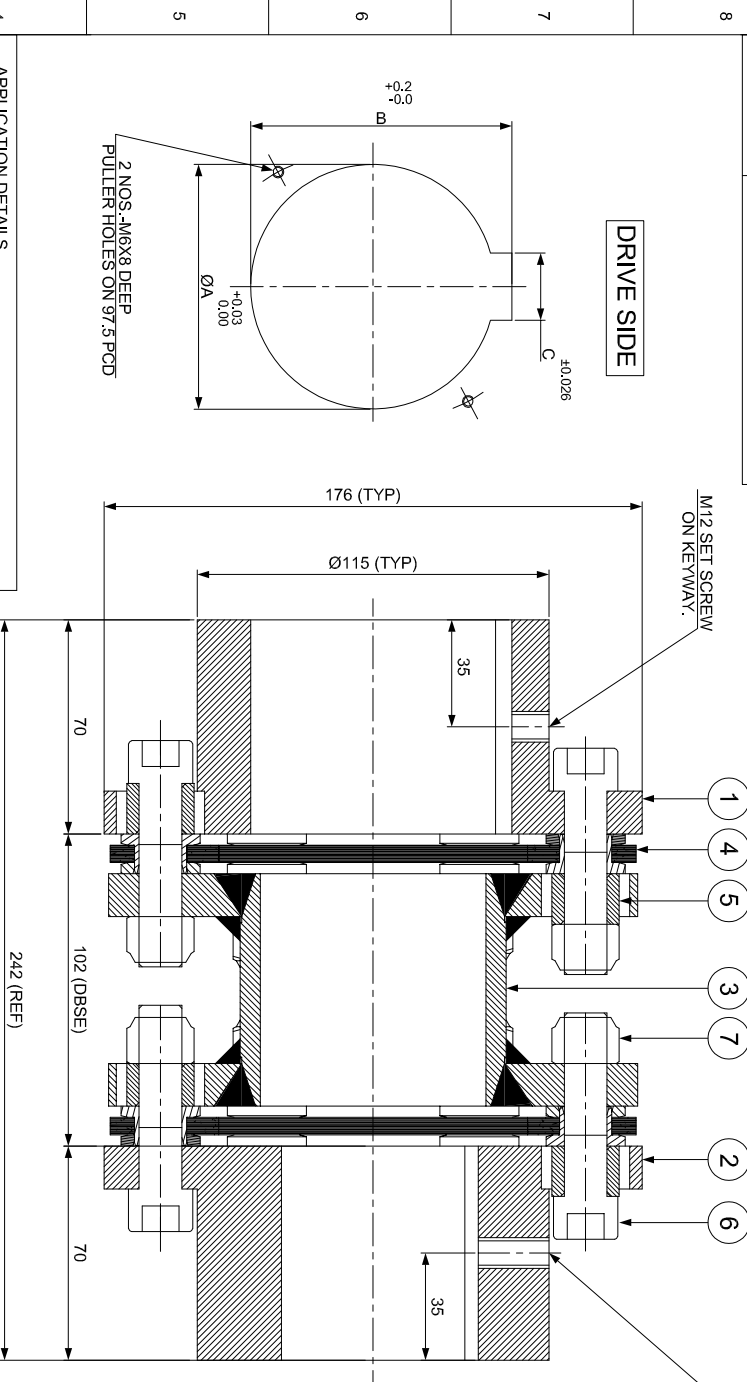


J I H G F E D C B A

SAP CODE

DRIVE SIDE

DRIVEN SIDE



4 APPLICATION DETAILS

APPLICATION	-
RATED POWER	-
RATED SPEED	-
RATED TORQUE	-
A.S.F.	-

3 COUPLING SPECIFICATIONS

COUPLING RATING	36.3 kW @ 100 RPM
CONTINUOUS TORQUE	3466 Nm
PEAK TORQUE	6932 Nm
SHORT CIRCUIT TORQUE	12131 Nm
MAX. BORE	80 mm
MAX. SPEED	4400 RPM
WEIGHT (Aprox.)	19.245 kg
INERTIA (WK ²)	0.066 kg.m ²
GD ²	0.264 MNm/rad
TORSIONAL STIFFNESS	0.629 MNm/rad
CPLG DYNAMIC BALANCING	GR. 2.5, ISO 21940-11
MAX. MISALIGNMENT	± 1 mm
AXIAL	0.75° PER STACK
ANGULAR	1.33 mm
RADIAL	

NOTE:-
TIGHTENING TORQUE :-
1) SR.NO.6 COUPLING BOLT = 136 Nm

REV.	DMRN NO.	DESCRIPTION	REV. BY	APPD. BY	DATE

7	NYLOCK NUT	GR. 10	12
6	COUPLING BOLT	AH BOLT GR. 12.9 (ASTM 574M)	12
5	SLEEVE	ASTM A 1040	12
4	ELEMENT BLADE ASSEMBLY	ANSI SS 301	2
3	SPACER	ASTM A 1068, ASTM A-36 / ASTM A 1040	1
2	DRIVEN HUB (I)	ASTM A 1040	1
1	DRIVE HUB (I)	ASTM A 1040	1

TITLE: RLM-400/102/11/XXXX CPLG

CUSTOMER NAME: RATHI TRANSPOWER PVT. LTD. PUNE, INDIA

MATERIAL: REFER TABLE

AUTHORITY/INITIALS: SIGN DATE

DRAWN: -

CHECKED: -

APPROVED: -

SCALE: NTS

REF. NO.:

ANG. OF PROJ. DRG. NO.: L/RLM-XXXXX/0