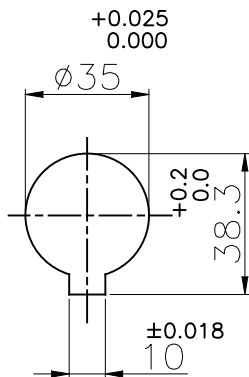
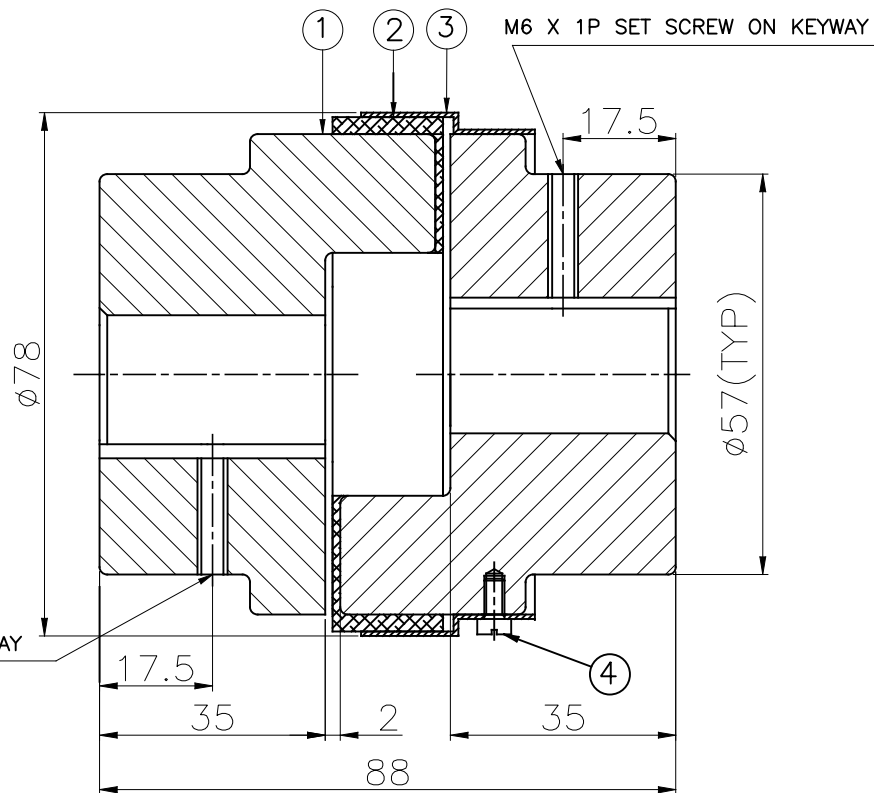
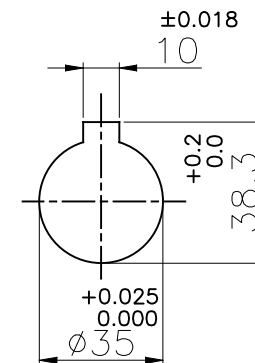


J I H G F E D C B A

**DRIVE END**



**DRIVEN END**



M6 X 1P SET SCREW ON KEYWAY

**APPLICATION DETAILS**

APPLICATION	-
RATED POWER	- KW
RATED SPEED	- RPM
RATED TORQUE	- Nm
A.S.F.	-

**COUPLING SPECIFICATIONS**

COUPLING RATING	0.49 KW AT 100 RPM
RATED TORQUE	46.40 Nm
MAX. BORE	35 mm
WEIGHT (Approx.)	1.58 Kg
INERTIA (WK <sup>2</sup> )	8.73X10 <sup>-4</sup> Kgm <sup>2</sup>

CPLG HUBS DYNAMICALLY BALANCED TO GR.6.3 AS PER ISO 1940- 1.

**MAX. MISALIGNMENTS**

AXIAL DEFLECTION	±1 mm
ANGULAR DEFLECTION	1°
RADIAL DEFLECTION	0.4 mm

4	CHEASE HEAD SCREW	STD	3
3	OUTSIDE RING	CRCA	1
2	SNAP WRAP	NITRILE RUBBER	1
1	HUB	CI IS 210 GR FG 260	2
SR NO	DESCRIPTION	MATERIAL	QTY.

REV.	DMRN NO.	DESCRIPTION	REV. BY	DATE

TITLE: **SW-100/----- CPLG REFER TABLE**

MATERIAL: **REFER TABLE**

CUSTOMER NAME: \_\_\_\_\_

SCALE: NTS REF. No.: \_\_\_\_\_

**RATHI** RATHI TRANSPOWER PVT LTD PUNE 411006 DRG. No.: \_\_\_\_\_

This drawing / information / design is the property of Rathi Transpower Pvt. Ltd. It is confidential & must not be made public or copied without prior written authorization & is subjected to recall at any time. Acceptance of this drawing constitutes full agreement with these conditions