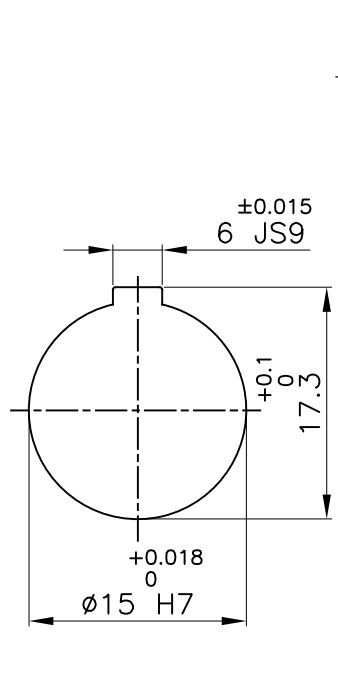
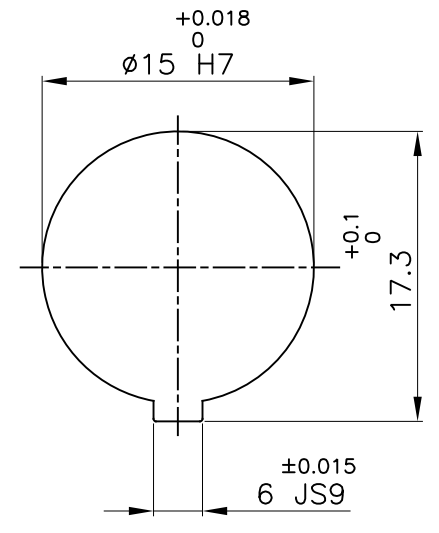
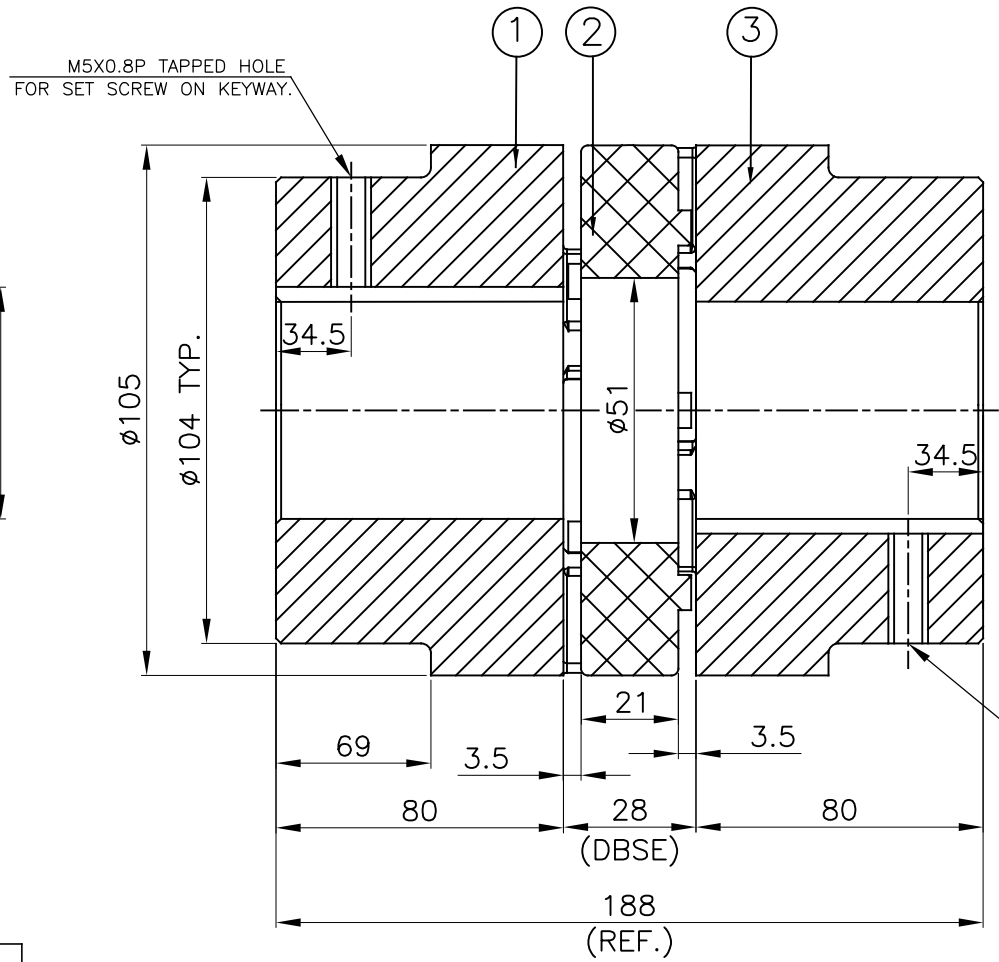


J I H G F E D C B A



**DRIVE SIDE**



**DRIVEN SIDE**

M5X0.8P TAPPED HOLE FOR SET SCREW ON KEYWAY.

APPLICATION DETAILS	
APPLICATION	-
RATED POWER	- KW
RATED SPEED	- RPM.
RATED TORQUE	- Nm
A.S.F.	-
COUPLING CAPACITY	
COUPLING RATING	6.98 KW AT 100RPM.
RATED TORQUE	667 Nm
MAX. BORE TYPE-III	62mm
WEIGHT (APPROX)	4.2kg
INERTIA (WK <sup>2</sup> )	13.4X10 <sup>-3</sup> kg-m <sup>2</sup>
MAX. MISALIGNMENT	
AXIAL	±3.0mm
ANGULAR	1°
PARALLE	0.35mm

3	HUB-III	C.I. IS:210 FG 260	1
2	SPIDER	POLYURETHANE (LIGHT IVORY)	1
1	HUB-III	C.I. IS:210 FG 260	1
SR NO	DESCRIPTION	MATERIAL	QTY.

REV.	DMRN NO.	DESCRIPTION	REV. BY	APPD. BY	DATE

TITLE: **RRJ-48 III/III /-----**  
**CPLG.**

MATERIAL: **REFER TABLE**

CUSTOMER NAME: -

AUTHORITY	INITIALS	SIGN	DATE
DRAWN	-	-	-
CHECKED	-	-	-
APPROVED	-	-	-

SCALE: NTS REF. No.: -

**RAHI** RATHI TRANSPOWER PVT LTD PUNE 411014

DRG. No.: -----/-

This drawing / information / design is the property of Rathi Transpower Pvt. Ltd. It is confidential & must not be made public or copied without prior written authorization & is subjected to recall at any time. Acceptance of this drawing constitutes full agreement with these conditions