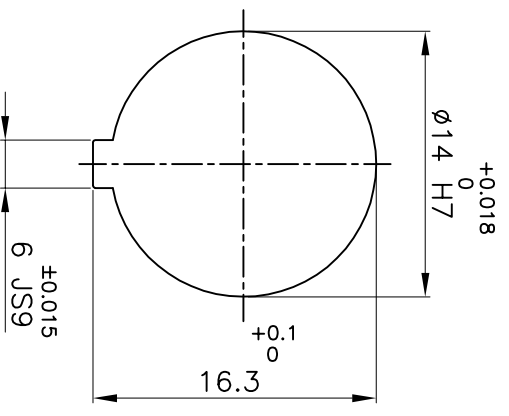
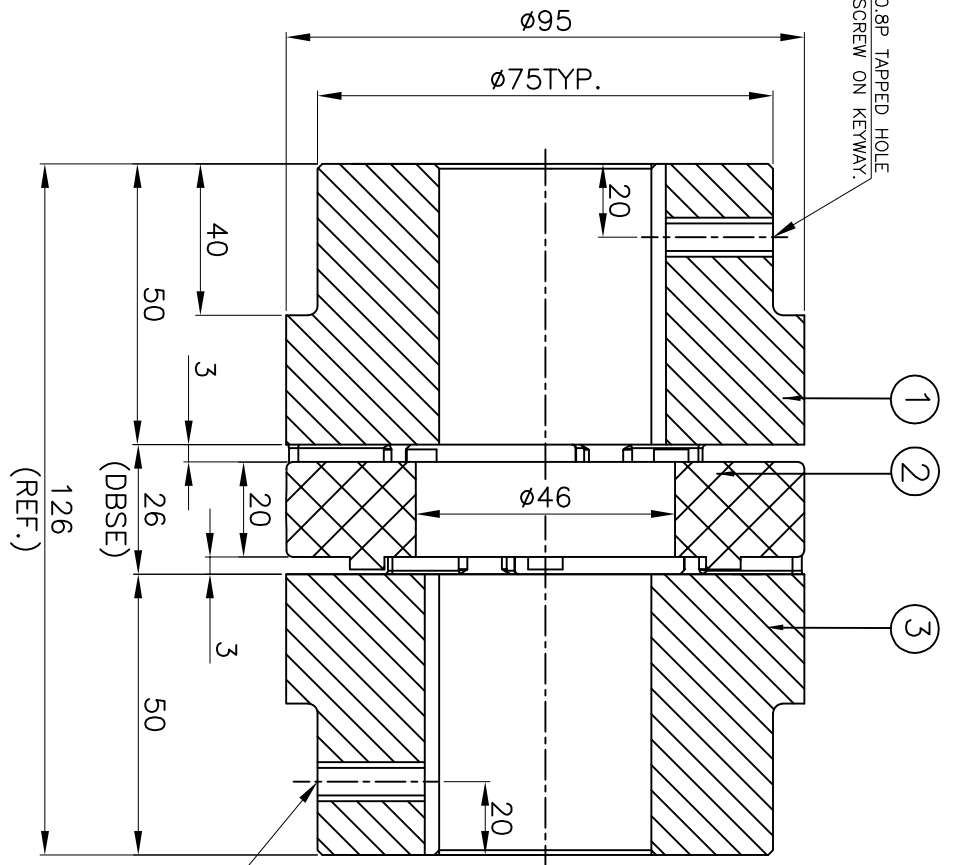


DRIVE SIDE



DRIVEN SIDE

APPLICATION DETAILS

APPLICATION	-
RATED POWER	- KW
RATED SPEED	- RPM
RATED TORQUE	- Nm
A.S.F.	-

COUPLING CAPACITY

COUPLING RATING	2.65KW AT 100RPM.
RATED TORQUE	253Nm
MAX. BORE TYPE-I	45mm
WEIGHT (APPROX)	3.2kg
INERTIA (WK ²)	4.1X10 ⁻³ kg-m ²

MAX. MISALIGNMENT

AXIAL	±2.5mm
ANGULAR	0.90°
PARALLEL	0.30mm

(REF.)

MSX0.8P TAPPED HOLE FOR SET SCREW ON KEYWAY.

S/N	SR NO	DESCRIPTION	MATERIAL	QTY.
3	HUB-I	C.I. IS:210 FG 260		1
2	SPIDER	POLYURETHANE (GRAY)		1
1	HUB-I	C.I. IS:210 FG 260		1

TITLE: **RRJ-42 1/1 /-----**
CPLG.
 MATERIAL: **REFER TABLE**
 CUSTOMER NAME: **RAJH**

RAJH RATHI TRANSPOWER PVT LTD PUNE 411006

REV. NO.	DESCRIPTION	REV. BY	APPD. BY	DATE

SCALE: NTS REF. No.:
 AUTHORITY INITIALS SIGN DATE
 DRAWN -
 CHECKED -
 APPROVED -