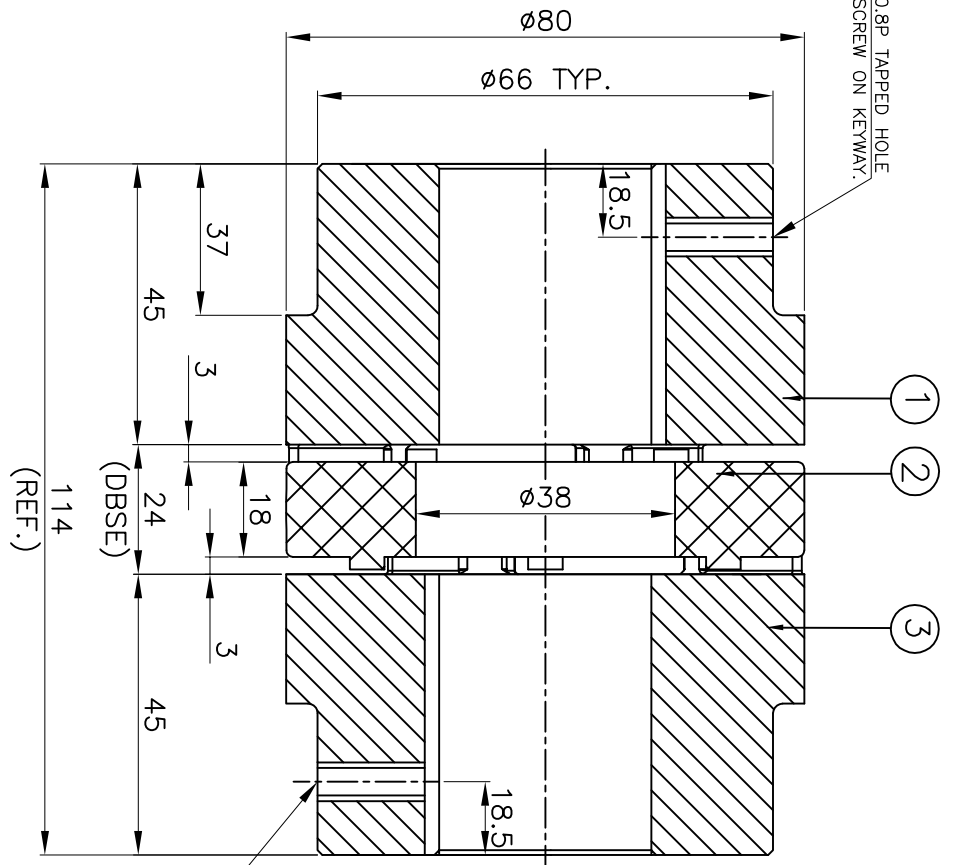
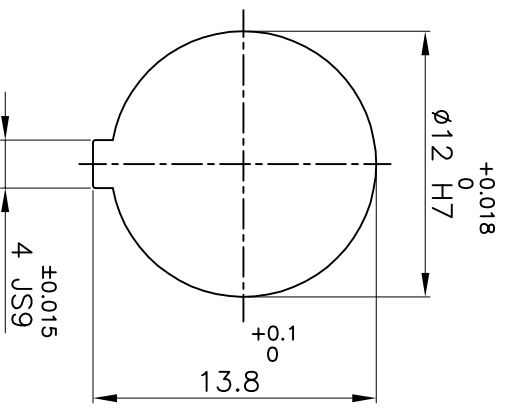


DRIVE SIDE



DRIVEN SIDE



(REF.)

MSX0.8P TAPPED HOLE FOR SET SCREW ON KEYWAY.

APPLICATION DETAILS

APPLICATION	-
RATED POWER	- KW
RATED SPEED	- RPM
RATED TORQUE	- Nm
A.S.F.	-

COUPLING CAPACITY

COUPLING RATING	1.9KW AT 100RPM.
RATED TORQUE	182Nm
MAX. BORE TYPE-I	40mm
WEIGHT (APPROX)	2.0kg
INERTIA (WK ²)	1.85X10 ⁻³ kg-m ²

MAX. MISALIGNMENT

AXIAL	±2.2mm
ANGULAR	0.90°
PARALLEL	0.25mm

SERIAL NO	DESCRIPTION	MATERIAL	QTY.
3	HUB-I	C.I IS:210	1
2	SPIDER	POLYURETHANE (GRAY)	1
1	HUB-I	C.I IS:210	1

TITLE: **RRJ-38 1/1 /-----**
 CPLG. REFER TABLE
 MATERIAL: DRAWN: - CHECKED: - APPROVED: -
 CUSTOMER NAME: - SCALE: NTS/REF: No.: -
 AUTHORITY INITIALS: - DATE: -

REV. DWGN NO. DESCRIPTION REV. BY APPD. BY DATE

RATHI RATHI TRANSPOWER PVT LTD PUNE 411006 DRG. No.: R/L-----/-