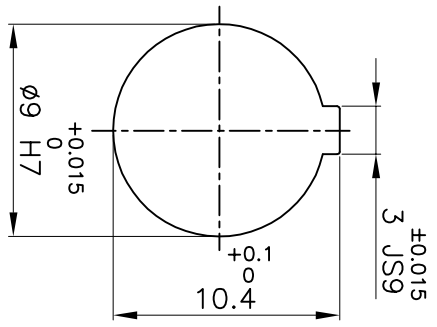


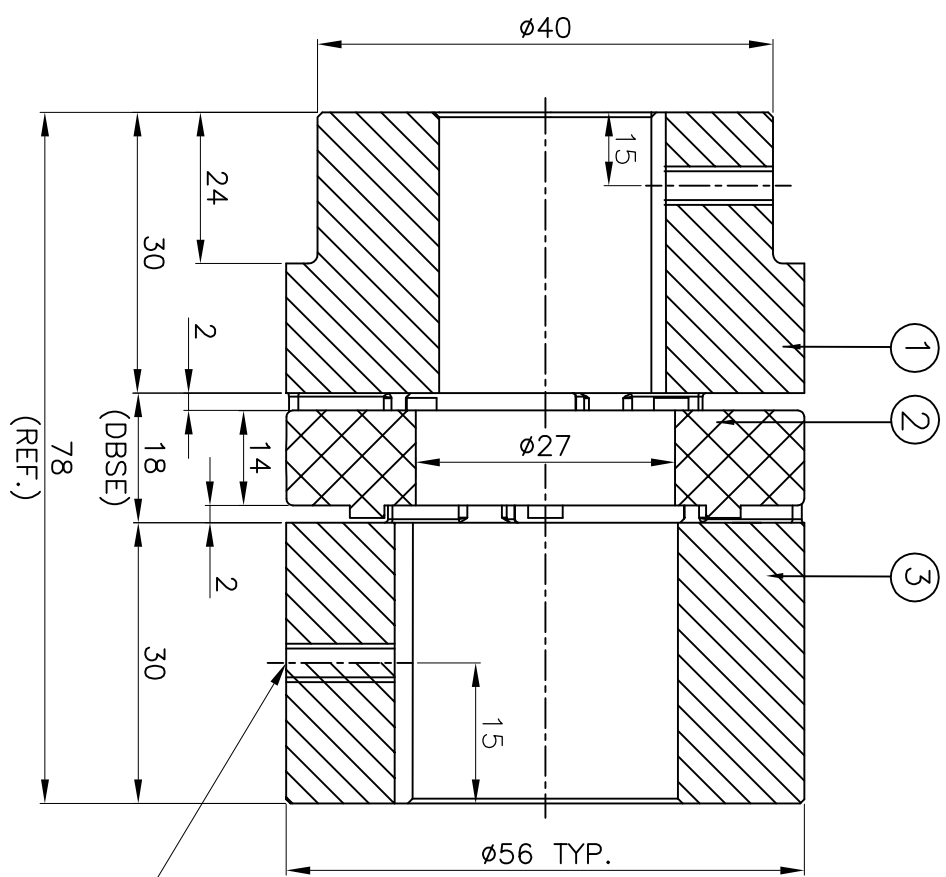
IF IN DOUBT, PLEASE ASK

DO NOT SCALE ALL DIMENSIONS ARE IN mm

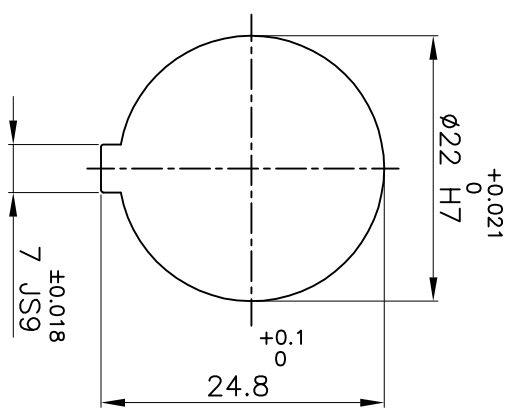
J I H G F E D C B A



DRIVE SIDE



DRIVEN SIDE



M5X0.8P TAPPED HOLE FOR SET SCREW ON KEYWAY.

**APPLICATION DETAILS**

APPLICATION	-
RATED POWER	- KW
RATED SPEED	- RPM.
RATED TORQUE	- Nm
A.S.F.	-

**COUPLING CAPACITY**

COUPLING RATING	0.65KW AT 100RPM.
RATED TORQUE	62 Nm
MAX. BORE TYPE-I & II	24 & 28mm.
WEIGHT (APPROX)	0.34kg
INERTIA (WK <sup>2</sup> )	19X10 <sup>-5</sup> kg-m <sup>2</sup>

**MAX. MISALIGNMENT**

AXIAL	±1.6mm
ANGULAR	0.80°
PARALLEL	0.15mm

S/R NO	DESCRIPTION	MATERIAL	QTY.
3	HUB-II	ALUMINIUM	1
2	SPIDER	POLYURETHANE (BLUE)	1
1	HUB-I	ALUMINIUM	1

TITLE: **RRJ-24 I/II /-----**  
 CPLG.  
 MATERIAL: **REFER TABLE**  
 CUSTOMER NAME: \_\_\_\_\_

RAIHI RATHI TRANSPOWER PVT LTD PUNE 411014  
 AUTHORITY INITIALS SIGN DATE  
 DRAWN - - - - -  
 CHECKED - - - - -  
 APPROVED - - - - -  
 SCALE: N/S REF. No.: \_\_\_\_\_  
 Dwg No.: \_\_\_\_\_  
 3 EN-F-112

This drawing / information / design is the property of Rathi Transpower Pvt. Ltd. It is confidential & must not be made public or copied without prior written authorization & is subjected to recall at any time. Acceptance of this drawing constitutes full agreement with these conditions