

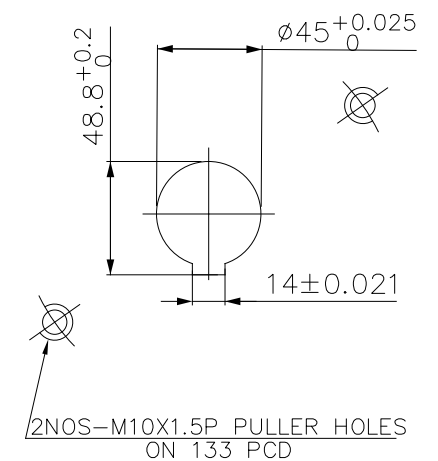
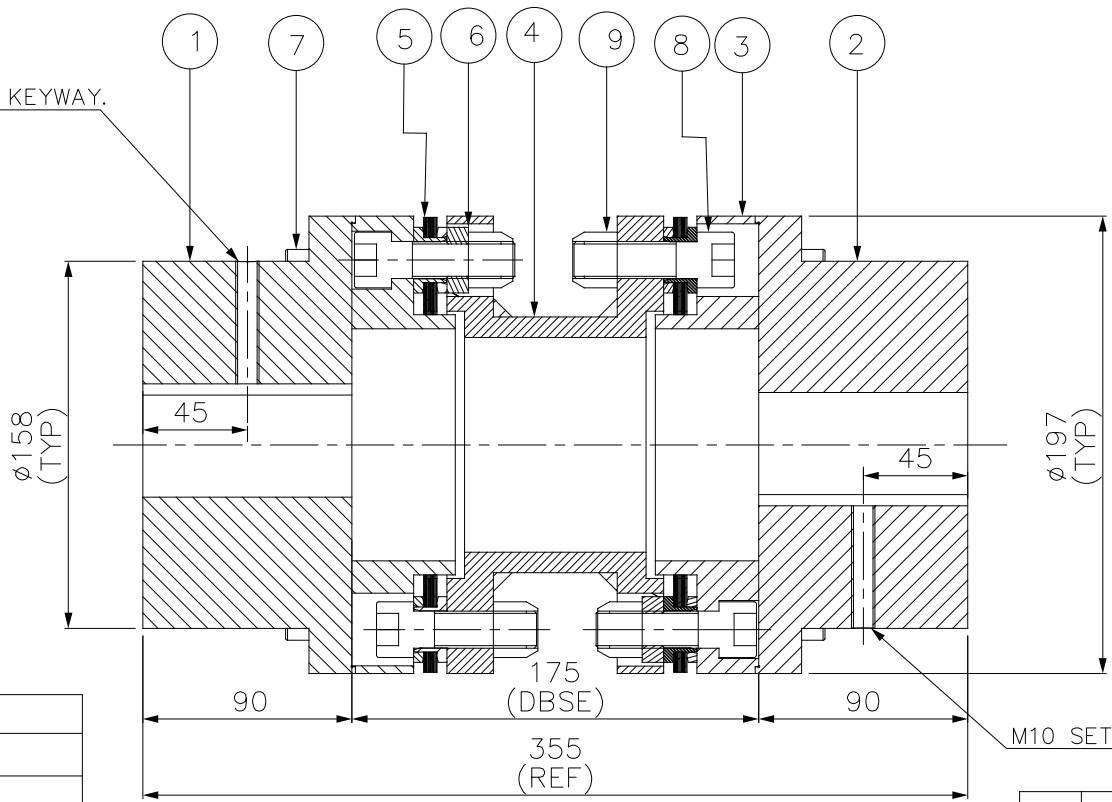
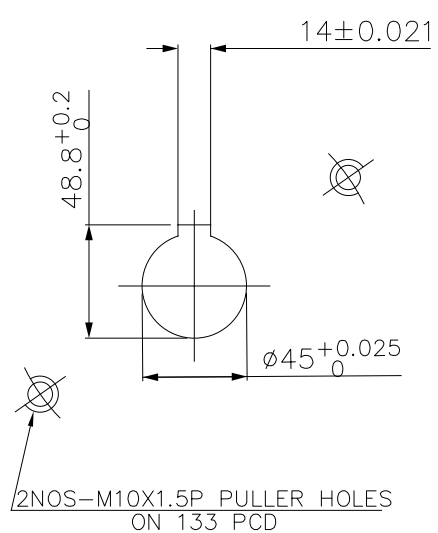
J I H G F E D C B A

ERP CODE: _____

DRIVE SIDE

DRIVEN SIDE

M10 SET SCREW ON KEYWAY.



M10 SET SCREW ON KEYWAY.

APPLICATION DETAILS	
APPLICATION	-
RATED POWER	-
RATED SPEED	-
RATED TORQUE	-
A.S.F.	-
COUPLING SPECIFICATIONS	
COUPLING RATING	58.5 KW @ 100 RPM
RATED TORQUE	5583 Nm
MAX. BORE	108 mm
WEIGHT (Approx.)	48.426 kg
INERTIA (WK ²)	0.226 kg.M ²
TORSIONAL STIFFNESS	1.239 MNm/rad
CPLG DYNAMIC BALANCED TO GR 6.3 AS PER ISO 1940- 1	
MAX. MISALIGNMENT	
AXIAL DEFLECTION	±2 mm
ANGULAR DEFLECTION	0.75°
RADIAL MISALIGNMENT	0.013 mm

NOTE:-
TIGHTENING TORQUE :-
 1) SR.NO.8 COUPLING BOLT = 250Nm
 2) SR.NO.7 ATTACHMENT BOLT = 59Nm

SR.NO.	DESCRIPTION	MATERIAL	QTY.
9	CLEVELOCK NUT	GR. 10	12
8	COUPLING BOLT	AH BOLT GR. 12.9	12
7	ATTACHMENT BOLT (I)	AH BOLT GR. 12.9	12
6	SLEEVE	ASTM A 1040	6
5	ELEMENT BLADE ASSEMBLY	SS 301	2
4	SPACER	ASTM A 1040/ASTM A-106B, ASTM A-36	1
3	ADAPTER I/II	ASTM A 1040	2
2	DRIVEN HUB (I)	ASTM A 1040	1
1	DRIVE HUB (I)	ASTM A 1040	1

REV	DMRN NO.	DESCRIPTION	REV. BY	APPD. BY	DATE

TITLE:	MATERIAL:	AUTHORITY	INITIALS	SIGN	DATE
REM-390(175)I/1 /XXXX CPLG	REFER TABLE	DRAWN	-	-	-
CUSTOMER NAME:		CHECKED	-	-	-
		APPROVED	-	-	-
		SCALE: NTS	REF. NO.		
		ANG. OF PROJ.	DRG.NO.: L/REM-XXXX/0		



RATHI TRANSPower PVT LTD
PUNE-411014

This drawing/information/ design is the property of Rathi Transpower Pvt. Ltd. It is confidential & must not be made public or copied without prior written authorization & is subjected to recall at any time. Acceptance of this drawing constitutes full arrangements with these conditions.