

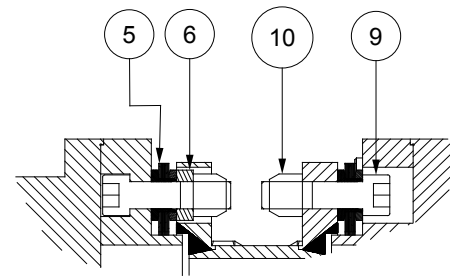
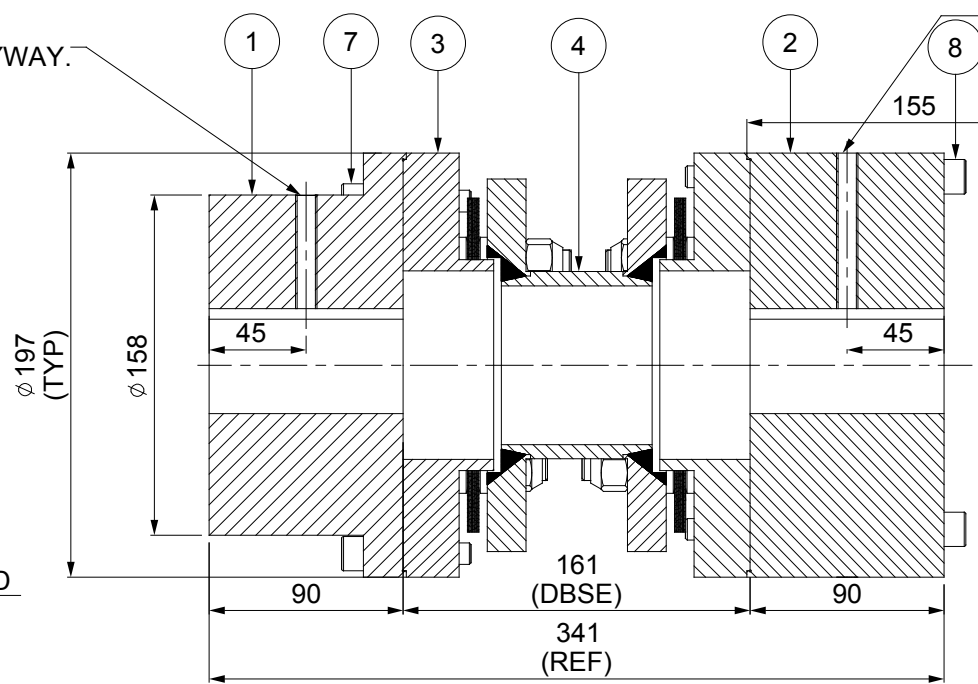
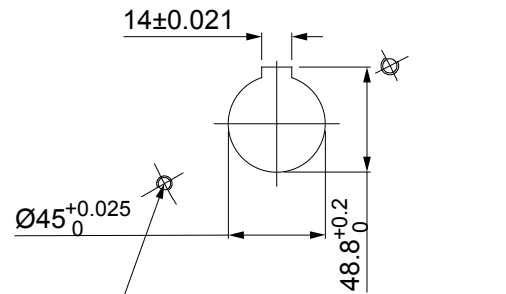
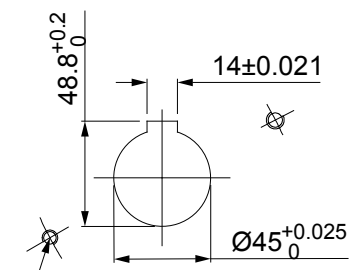
ERP CODE: _____

M10 SET SCREW ON KEYWAY.

M10 SET SCREW ON KEYWAY.

DRIVEN SIDE

DRIVE SIDE



NOTE:-
TIGHTENING TORQUE :-
 1) SR.NO.9 COUPLING BOLT = 161Nm
 2) SR.NO.7 & 8 ATTACHMENT BOLT = 59Nm

APPLICATION DETAILS	
APPLICATION	-
RATED POWER	-
RATED SPEED	-
RATED TORQUE	-
A.S.F.	-
COUPLING SPECIFICATIONS	
COUPLING RATING	36.3 KW @ 100 RPM
RATED TORQUE	3463 Nm
MAX. BORE	HUB(III)-108mm HUB (IV)-140mm
WEIGHT (Approx.)	69.414 kg
INERTIA (WK ²)	0.349 kg.M^2
TORSIONAL STIFFNESS	0.749 MNm/rad
CPLG DYNAMIC BALANCED TO GR 6.3 AS PER ISO 1940- 1	
MAX. MISALIGNMENT	
AXIAL DEFLECTION	± 1 mm
ANGULAR DEFLECTION	0.75°
RADIAL MISALIGNMENT	0.013mm

10	CLEVELOCK NUT	GR. 10	12
9	COUPLING BOLT	AH BOLT GR. 12.9	12
8	ATTACHMENT BOLT(IV)	AH BOLT GR. 12.9	6
7	ATTACHMENT BOLT (III)	AH BOLT GR. 12.9	6
6	SLEEVE	ASTM A 1040	6
5	ELEMENT BLADE ASSEMBLY	SS 301	2
4	SPACER	ASTM A-106B , ASTM A-36	1
3	ADAPTER III/IV	ASTM A 1040	6
2	DRIVE HUB (IV)	ASTM A 1040	1
1	DRIVEN HUB (III)	ASTM A 1040	1
SR.NO.	DESCRIPTION	MATERIAL	QTY.

TITLE: REM-370(161)III/IV /XXXX CPLG	MATERIAL: REFER TABLE	AUTHORITY	INITIALS	SIGN	DATE
CUSTOMER NAME:		DRAWN	-	-	-
		CHECKED	-	-	-
SCALE: 1:1		APPROVED	-	-	-
		ANG. OF PROJ.	REF. NO.		
		RATHI TRANSPower PVT LTD		DRG.NO.:	
		PUNE-411014		L/REM-XXXX/0	

REV	DMRN NO.	DESCRIPTION	REV. BY	APPD. BY	DATE

This drawing/information/ design is the property of Rathi Transpower Pvt. Ltd. It is confidential & must not be made public or copied without prior written authorization & is subjected to recall at any time. Acceptance of this drawing constitutes full arrangements with these conditions.