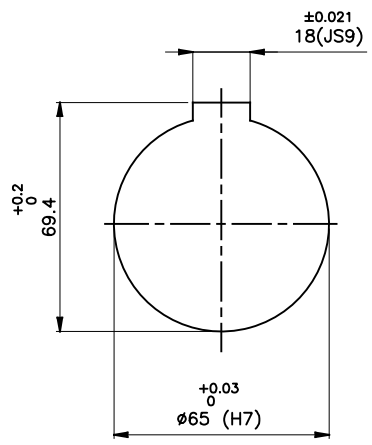
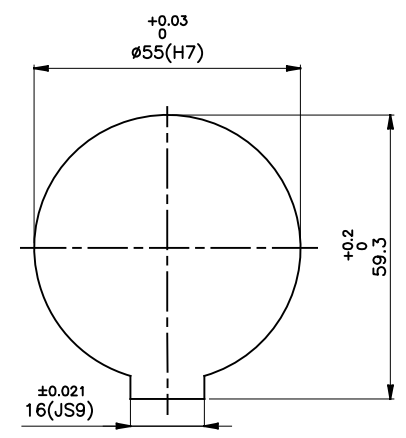
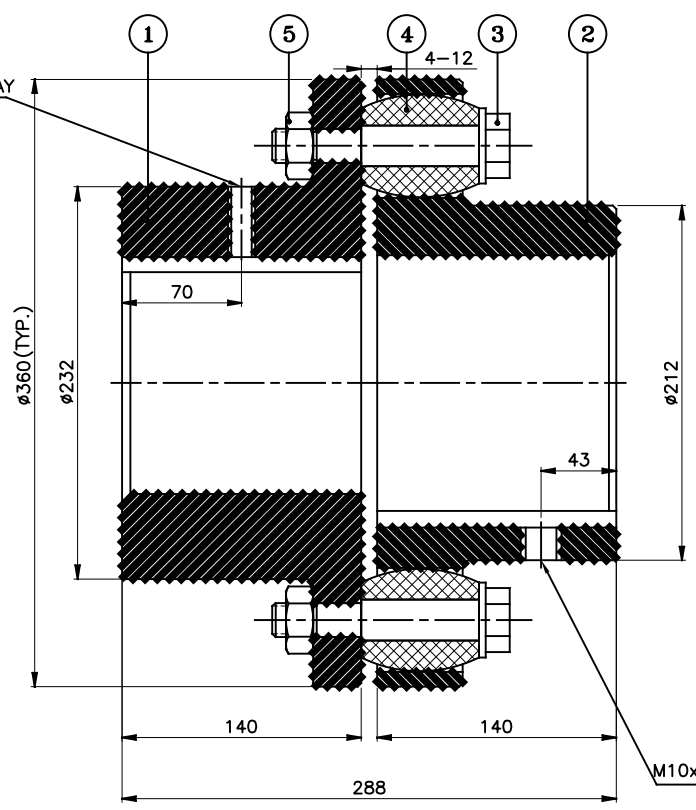


J I H G F E D C B A



**DRIVE END**



**DRIVEN END**

M10x1.5P SET SCREW ON KEYWAY

**APPLICATION DETAILS**

APPLICATION	-
RATED POWER	-
RATED SPEED	-
RATED TORQUE	-
A.S.F.	-

**COUPLING SPECIFICATIONS**

COUPLING RATING	93 kW @ 100 RPM
RATED TORQUE	8.87 kNm.
PEAK TORQUE	17.74 kNm.
MAX. SPEED	1900 rpm.
MAX. BORE	PIN HALF 150 mm BUSH HALF 135 mm
WEIGHT (Approx.)	1000 kg
INERTIA (WK <sup>2</sup> )	1.40 kgm <sup>2</sup>

COUPLING HUBS DYNAMICALLY BALANCED TO GR. 6.3 AS PER ISO: 1940-1.

**MAX. MISALIGNMENTS**

AXIAL DEFLECTION	±4 mm.
ANGULAR DEFLECTION	1°
RADIAL DEFLECTION	0.9 mm

5	NYLOCK NUT	NYLOCK NUT GR. 8	11
4	BUSH	NATURAL RUBBER	11
3	PIN	EN-8D/15B25	11
2	BUSH HALF	CI IS-210 Gr.FG-260	1
1	PIN HALF	CI IS-210 Gr.FG-260	1
SR NO	DESCRIPTION	MATERIAL	QTY

REV.	DMRN NO.	DESCRIPTION	REV. BY	APPD. BY	DATE

TITLE: **RB-360-11 /----- CPLG.** MATERIAL: REFER TABLE

CUSTOMER NAME: \_\_\_\_\_

SCALE: NTS REF. No.: \_\_\_\_\_

**RATHI** RATHI TRANSPower PVT LTD PUNE 411014 DRG. No.: \_\_\_\_\_

This drawing / information / design is the property of Rathi Transpower Pvt. Ltd. It is confidential & must not be made public or copied without prior written authorization & is subjected to recall at any time. Acceptance of this drawing constitutes full agreement with these conditions