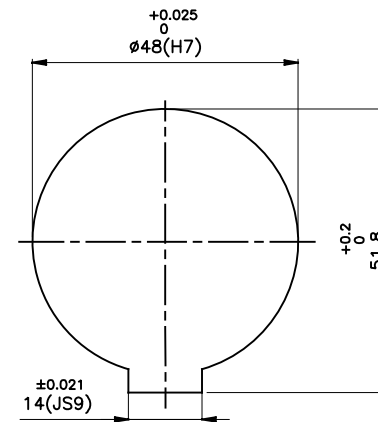
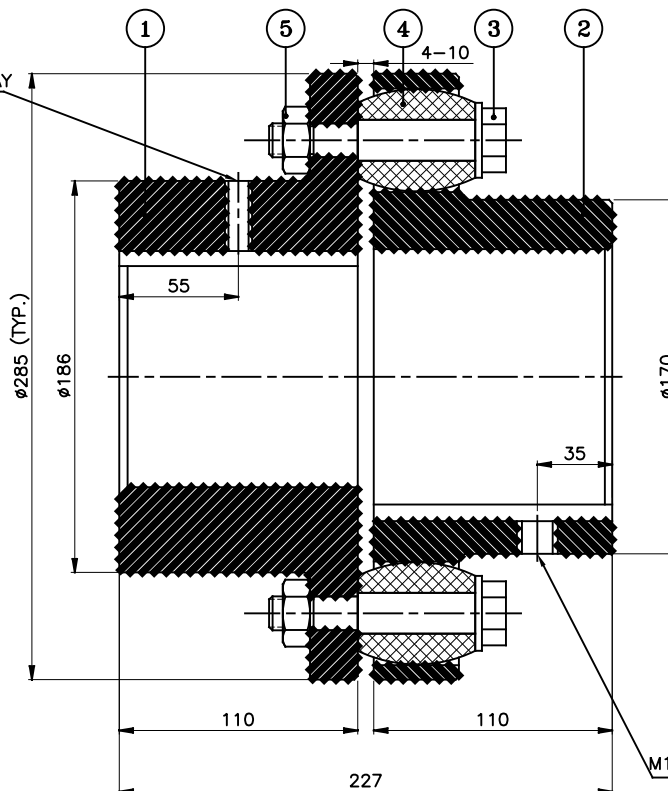


DRIVE END



DRIVEN END

APPLICATION DETAILS

APPLICATION	-
RATED POWER	-
RATED SPEED	-
RATED TORQUE	-
A.S.F.	-

COUPLING SPECIFICATIONS

COUPLING RATING	120 kW @ 100 RPM
RATED TORQUE	11.45 kNm.
PEAK TORQUE	22.91 kNm.
MAX. SPEED	2400 rpm.
MAX. BORE	PIN HALF 125 mm BUSH HALF 115 mm
WEIGHT (Approx.)	51.44 Kg
INERTIA (WK ²)	0.45 Kgm ²

COUPLING HUBS DYNAMICALLY BALANCED TO GR. 6.3 AS PER ISO: 1940-1.

MAX. MISALIGNMENTS

AXIAL DEFLECTION	±3 mm.
ANGULAR DEFLECTION	1°
RADIAL DEFLECTION	0.7 mm

5	NYLOCK NUT	HIGH TENSILE STEEL	11
4	BUSH	H TRANS	11
3	PIN	EN-8D/15B25	11
2	BUSH HALF	CI IS-210 Gr.FG-260	1
1	PIN HALF	CI IS-210 Gr.FG-260	1
SR NO	DESCRIPTION	MATERIAL	QTY

REV.	DMRN NO.	DESCRIPTION	REV. BY	APPD. BY	DATE

TITLE:	RB-285-11 /----- CPLG.	MATERIAL:	REFER TABLE	AUTHORITY	INITIALS	SIGN	DATE
CUSTOMER NAME:				DRAWN	-	-	-
				CHECKED	-	-	-
				APPROVED	-	-	-
				SCALE: NTS	REF. No.:	-	-



RATHI TRANSPower PVT LTD
PUNE 411014

DRG. No.: -

This drawing / information / design is the property of Rathi Transpower Pvt. Ltd. It is confidential & must not be made public or copied without prior written authorization & is subjected to recall at any time. Acceptance of this drawing constitutes full agreement with these conditions