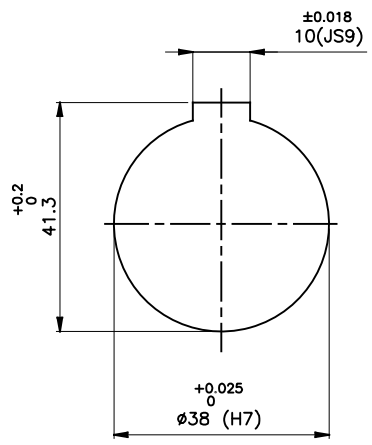
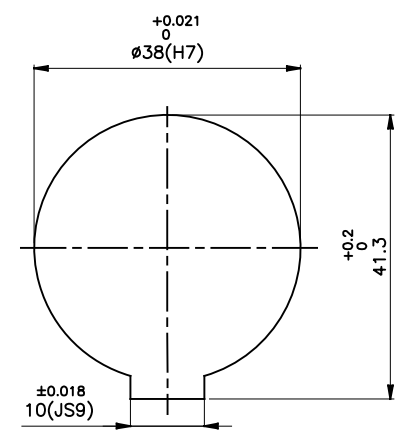
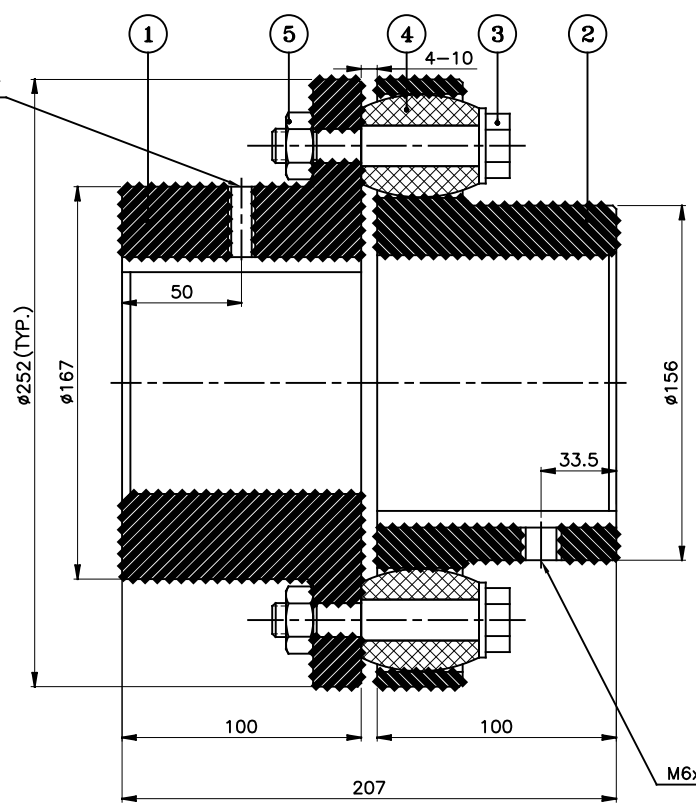


J I H G F E D C B A



DRIVE END



DRIVEN END

APPLICATION DETAILS

| | |
|--------------|---|
| APPLICATION | - |
| RATED POWER | - |
| RATED SPEED | - |
| RATED TORQUE | - |
| A.S.F. | - |

COUPLING SPECIFICATIONS

| | |
|----------------------------|-----------------------|
| COUPLING RATING | 80 kW @ 100 RPM |
| RATED TORQUE | 7.63 kNm. |
| PEAK TORQUE | 15.27 kNm. |
| MAX. SPEED | 2700 rpm. |
| MAX. BORE | PIN HALF 115 mm |
| | BUSH HALF 105 mm |
| WEIGHT(Approx.) | 37.17 Kg |
| INERTIA (WK ²) | 0.26 Kgm ² |

COUPLING HUBS DYNAMICALLY BALANCED TO GR. 6.3 AS PER ISO: 1940-1.

MAX. MISALIGNMENTS

| | |
|--------------------|--------|
| AXIAL DEFLECTION | ±3 mm. |
| ANGULAR DEFLECTION | 1° |
| RADIAL DEFLECTION | 0.6 mm |

| 5 | NYLOCK NUT | NYLOCK NUT GR. 8 | 12 |
|-------|-------------|---------------------|-----|
| 4 | BUSH | H TRANS | 12 |
| 3 | PIN | EN-8D/15B25 | 12 |
| 2 | BUSH HALF | CI IS-210 Gr.FG-260 | 1 |
| 1 | PIN HALF | CI IS-210 Gr.FG-260 | 1 |
| SR NO | DESCRIPTION | MATERIAL | QTY |

| | | | | | |
|------|----------|-------------|---------|----------|------|
| REV. | DMRN NO. | DESCRIPTION | REV. BY | APPD. BY | DATE |
| | | | | | |
| | | | | | |
| | | | | | |

TITLE: **RB-252-12 /----- CPLG.**

MATERIAL: REFER TABLE

CUSTOMER NAME: _____

SCALE: NTS REF. No.: _____

RATHI RATHI TRANSPOWER PVT LTD PUNE 411014

DRG. No.: _____

This drawing / information / design is the property of Rathi Transpower Pvt. Ltd. It is confidential & must not be made public or copied without prior written authorization & is subjected to recall at any time. Acceptance of this drawing constitutes full agreement with these conditions