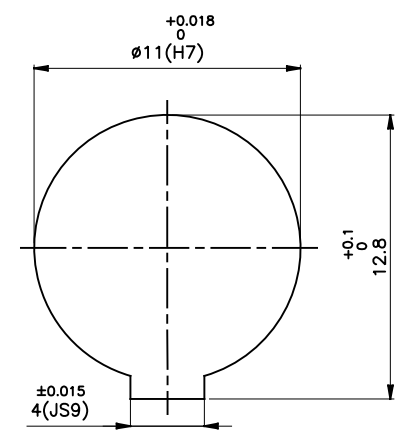
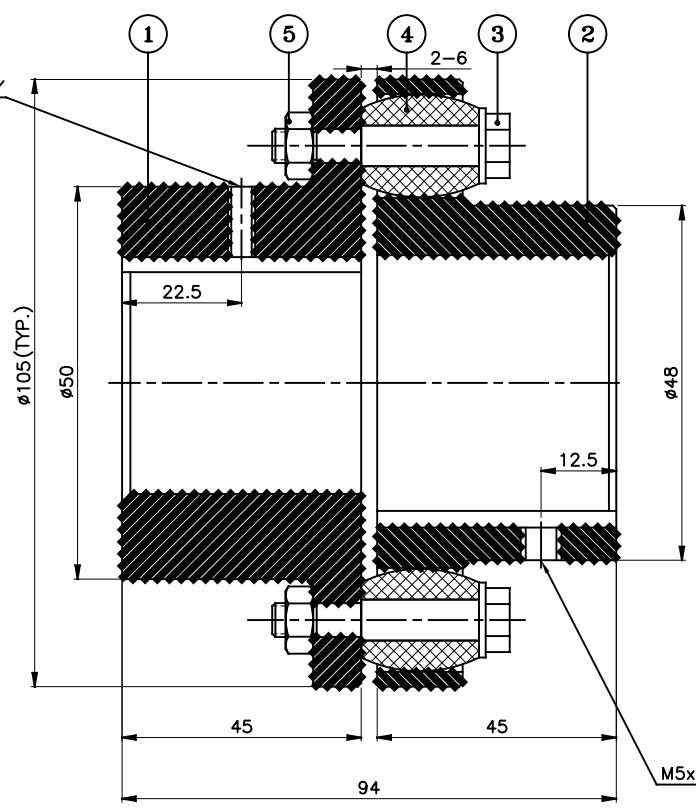


DRIVE END



DRIVEN END

APPLICATION DETAILS	
APPLICATION	-
RATED POWER	-
RATED SPEED	-
RATED TORQUE	-
A.S.F.	-

COUPLING SPECIFICATIONS	
COUPLING RATING	1kW @ 100 RPM
RATED TORQUE	0.095 kNm.
PEAK TORQUE	0.19 kNm.
MAX. SPEED	7200 rpm.
MAX. BORE	PIN HALF 32 mm
	BUSH HALF 30 mm
WEIGHT(Approx.)	2.47 Kg
INERTIA (WK ²)	0.0037 Kg ²

MAX. MISALIGNMENTS	
AXIAL DEFLECTION	± 2 mm.
ANGULAR DEFLECTION	1°
RADIAL DEFLECTION	0.3 mm

SR NO	DESCRIPTION	MATERIAL	QTY
5	NYLOCK NUT	NYLOCK NUT GR. 8	3
4	BUSH	STEEL BUSH	3
3	PIN	EN-8D/15B25	3
2	BUSH HALF	CI IS-210 Gr.FG-260	1
1	PIN HALF	CI IS-210 Gr.FG-260	1

REV.	DMRN NO.	DESCRIPTION	REV. BY	APPD. BY	DATE

TITLE:	RB-105-3 /----- CPLG.	MATERIAL:	REFER TABLE	AUTHORITY:	INITIALS	SIGN	DATE
CUSTOMER NAME:		APPROVED:		SCALE:	NTS	REF. No.:	
		RATHI TRANSPower PVT LTD PUNE 411014		DRG. No.: -----		3 EN-F-112 REV1	

This drawing / information / design is the property of Rathi Transpower Pvt. Ltd. It is confidential & must not be made public or copied without prior written authorization & is subjected to recall at any time. Acceptance of this drawing constitutes full agreement with these conditions