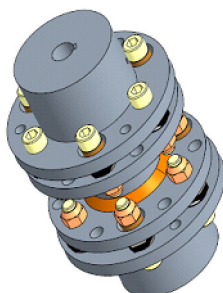
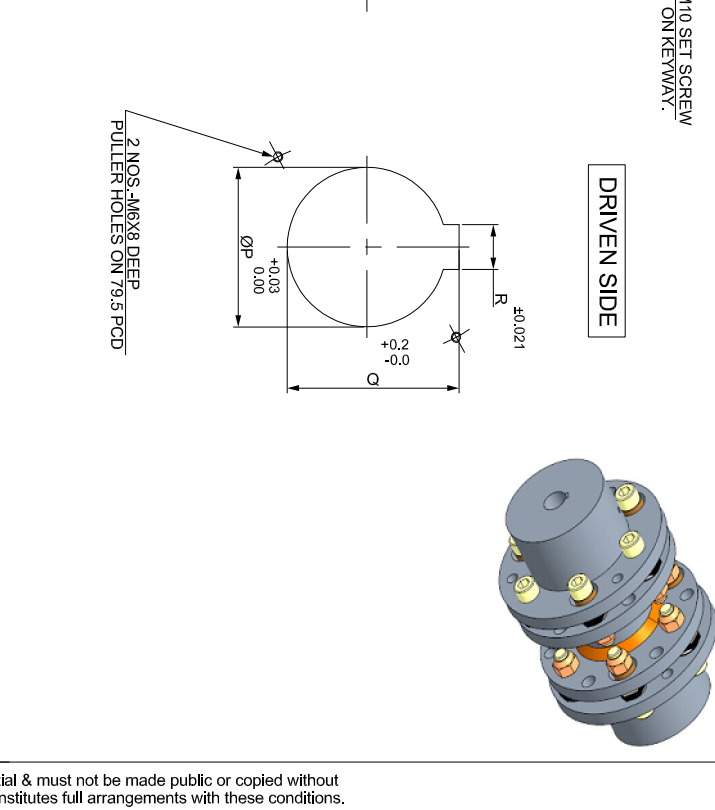
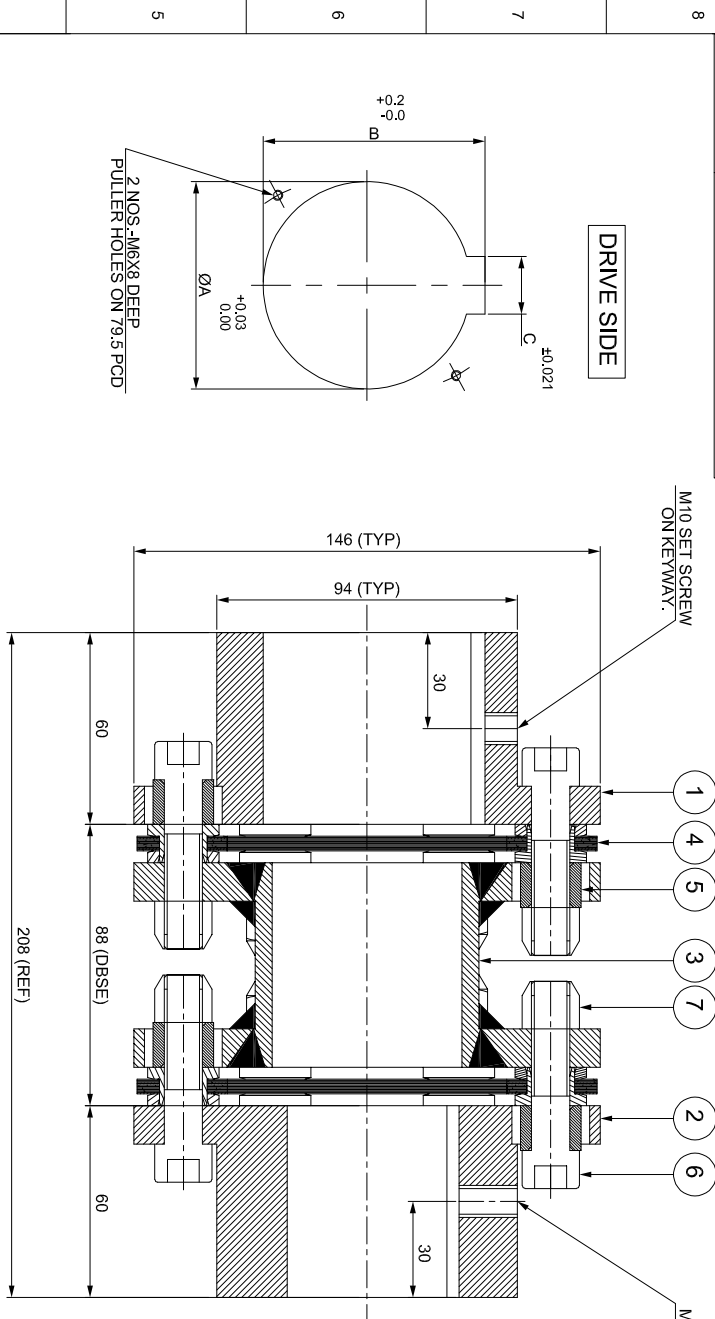


J	I	H	G	F	E	D	C	B	A
SAP CODE									



APPLICATION DETAILS	
RATED POWER	-
RATED SPEED	-
RATED TORQUE	-
A.S.F.	-
COUPLING SPECIFICATIONS	
COUPLING RATING	20 kW @ 100 RPM
CONTINUOUS TORQUE	1910 Nm
PEAK TORQUE	3820 Nm
SHORT CIRCUIT TORQUE	6685 Nm
MAX. BORE	65 mm
MAX. SPEED	4800 RPM
WEIGHT (Approx.)	12.464 kg
INERTIA (WK ²)	0.029 kg.m ²
GD ^{v2}	0.116 kg.m ²
TORSIONAL STIFFNESS	0.320 MNm/rad
CPLG DYNAMIC BALANCING	GR. 2.5, ISO 21940-11
MAX. MISALIGNMENT	± 1 mm
AXIAL	0.75° PER STACK
ANGULAR	1.15 mm
RADIAL	

REV	DMRN NO	DESCRIPTION	REV. BY	APPD. BY	DATE

NOTE:-
TIGHTENING TORQUE :-
1) SR.NO.6 COUPLING BOLT = 88 Nm

S.R.NO.	DESCRIPTION	MATERIAL	AUTHORITY/INITIALS	SIGN	DATE	QTY.
1	DRIVE HUB (I)	ASTM A 1040				1
2	DRIVEN HUB (I)	ASTM A 1040				1
3	SPACER	ASTM A 1068, ASTM A-36 / ASTM A 1040				1
4	ELEMENT BLADE ASSEMBLY	ASTM A 301				2
5	SLEEVE	ASTM A 1040				12
6	COUPLING BOLT	AH BOLT GR. 12.9 (ASTM 574M)				12
7	NYLOCK NUT	GR. 10				12

TITLE:	RLM-220(88)II /XXXX CPLG	REFER TABLE	
CUSTOMER NAME:	RATHI TRANSPOWER PVT. LTD.	SCALE: NTS	REF. NO. -
	PUNE, INDIA		

ANG. OF PROJ.	DRG. NO.:
	L/RLM-XXXXX0