

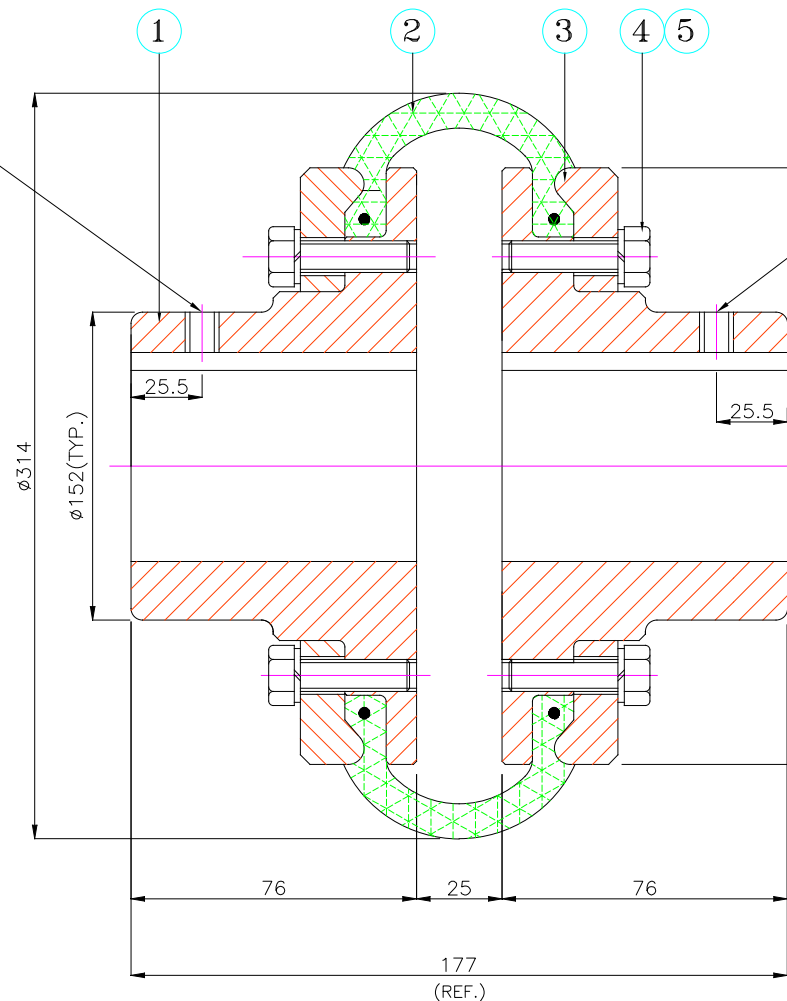
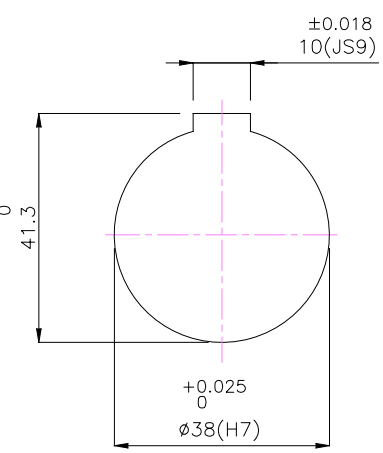
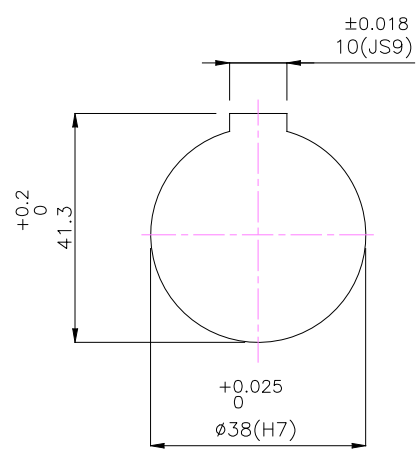
J I H G F E D C B A

DRIVE END

DRIVEN END

M6x1P SETSCREW ON KEYWAY

M6x1P SETSCREW ON KEYWAY



APPLICATION DETAILS

APPLICATION	-
RATED POWER	-
RATED SPEED	-
RATED TORQUE	-
A.S.F.	-

COUPLING SPECIFICATIONS

COUPLING RATING	13.9 kW @ 100 RPM
RATED TORQUE	1.32 kNm.
PEAK TORQUE	2.65 kNm.
MAX. SPEED	2050 rpm.
MAX. BORE	100 mm
WEIGHT(Approx.)	41.7 Kg
INERTIA (WK ²)	0.353 Kg ^m ²

COUPLING HUBS DYNAMICALLY BALANCED TO GR.6.3 AS PER ISO: 1940-1.

MAX. MISALIGNMENTS

AXIAL DEFLECTION	±4.0 mm.
ANGULAR DEFLECTION	3°
RADIAL DEFLECTION	3.2 mm

5	SPRING WASHER	SPRING STEEL	12
4	HEX HEAD BOLT	HIGH TENSILE STEEL	12
3	CLAMPING RING	S.G. IRON-400/15	2
2	TYRE	NATURAL RUBBER	1
1	HUB	CI IS-210 GR.FG 260	2
SR NO	DESCRIPTION	MATERIAL	QTY.

REV.	DMRN NO.	DESCRIPTION	REV. BY	APPD. BY	DATE

TITLE: **T0-12 B /----- CPLG.**

MATERIAL: REFER TABLE

CUSTOMER NAME: _____

SCALE: NTS REF. No.: _____

RATHI RATHI TRANSPower PVT LTD PUNE 411014

DRG. No.: _____

AUTHORITY	INITIALS	SIGN	DATE
DRAWN	-	-	-
CHECKED	-	-	-
APPROVED	-	-	-

This drawing / information / design is the property of Rathi Transpower Pvt. Ltd. It is confidential & must not be made public or copied without prior written authorization & is subjected to recall at any time. Acceptance of this drawing constitutes full agreement with these conditions