

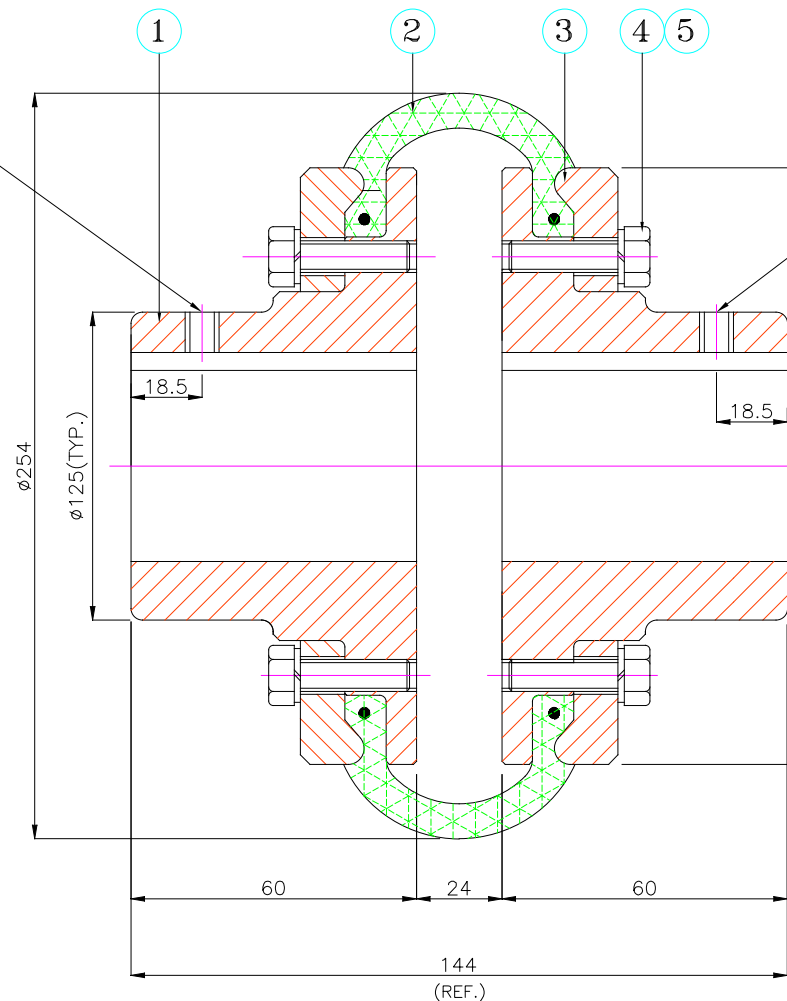
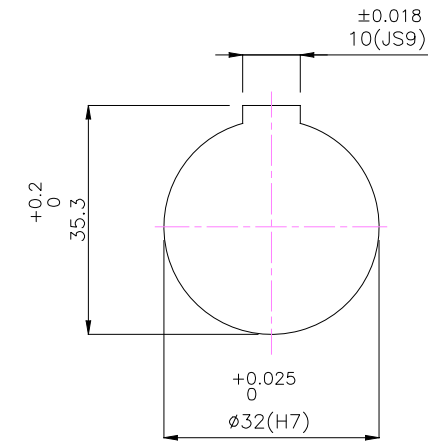
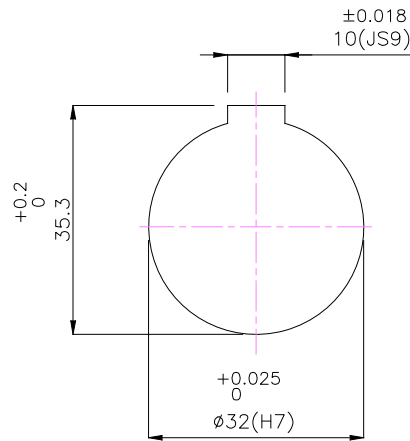
J I H G F E D C B A

DRIVE END

DRIVEN END

M6x1P SETSCREW ON KEYWAY

M6x1P SETSCREW ON KEYWAY



APPLICATION DETAILS	
APPLICATION	-
RATED POWER	-
RATED SPEED	-
RATED TORQUE	-
A.S.F.	-
COUPLING SPECIFICATIONS	
COUPLING RATING	7.07 kW @ 100 RPM
RATED TORQUE	0.67 kNm.
PEAK TORQUE	1.35 kNm.
MAX. SPEED	2600 rpm.
MAX. BORE	80 mm
WEIGHT(Approx.)	20.7 Kg
INERTIA (WK ²)	0.125 Kg ^m ²
COUPLING HUBS DYNAMICALLY BALANCED TO GR.6.3 AS PER ISO: 1940-1.	
MAX. MISALIGNMENTS	
AXIAL DEFLECTION	±3.3 mm.
ANGULAR DEFLECTION	3°
RADIAL DEFLECTION	2.6 mm

SR NO	DESCRIPTION	MATERIAL	QTY.
5	SPRING WASHER	SPRING STEEL	12
4	HEX HEAD BOLT	HIGH TENSILE STEEL	12
3	CLAMPING RING	S.G. IRON-400/15	2
2	TYRE	NATURAL RUBBER	1
1	HUB	CI IS-210 GR.FG 260	2

REV.	DMRN NO.	DESCRIPTION	REV. BY	APPD. BY	DATE

TITLE: T0-10 B /----- CPLG.	MATERIAL: REFER TABLE	AUTHORITY	INITIALS	SIGN	DATE
CUSTOMER NAME:		DRAWN	-	-	-
		CHECKED	-	-	-
		APPROVED	-	-	-
		SCALE: NTS	REF. No.:	-	
		DRG. No.:		-----	

This drawing / information / design is the property of Rathi Transpower Pvt. Ltd. It is confidential & must not be made public or copied without prior written authorization & is subjected to recall at any time. Acceptance of this drawing constitutes full agreement with these conditions