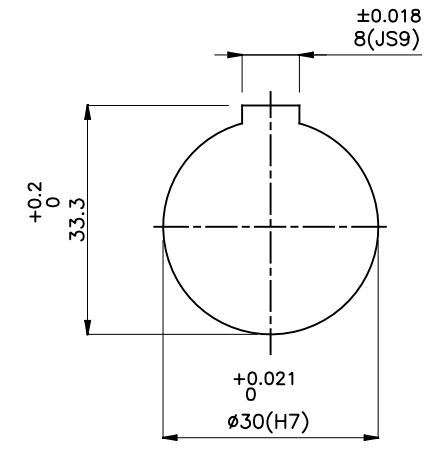
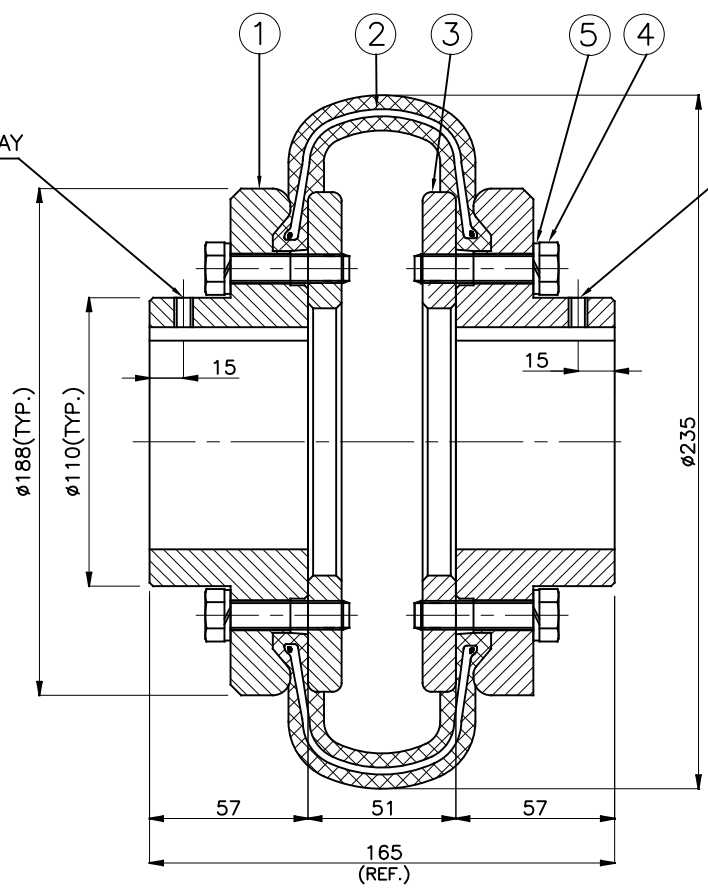
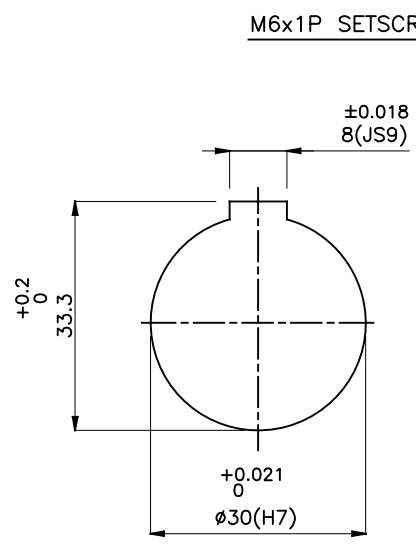


J I H G F E D C B A

DRIVE END

DRIVEN END



APPLICATION DETAILS	
APPLICATION	-
RATED POWER	-
RATED SPEED	-
RATED TORQUE	-
A.S.F.	-
COUPLING SPECIFICATIONS	
COUPLING RATING	5.24 kW @ 100 RPM
RATED TORQUE	0.50 kNm.
PEAK TORQUE	1.01 kNm.
MAX. SPEED	3000 rpm.
MAX. BORE	75 mm
WEIGHT(Approx.)	14.37 Kg
INERTIA (WK ²)	0.065 Kg ^m ²
COUPLING HUBS DYNAMICALLY BALANCED TO GR.6.3 AS PER ISO: 1940-1.	
MAX. MISALIGNMENTS	
AXIAL DEFLECTION	±3.0 mm.
ANGULAR DEFLECTION	2'
RADIAL DEFLECTION	2.4 mm

SR NO	DESCRIPTION	MATERIAL	QTY.
5	SPRING WASHER	SPRING STEEL	12
4	HEX HEAD BOLT	HIGH TENSILE STEEL	12
3	CLAMPING RING	M.S. IS 2062	2
2	TYRE	NATURAL RUBBER	1
1	HUB	CI IS-210 GR.FG 260	2

REV.	DMRN NO.	DESCRIPTION	REV. BY	APPD. BY	DATE

TITLE: T-9 B/----- CPLG.		MATERIAL: REFER TABLE	AUTHORITY	INITIALS	SIGN	DATE
CUSTOMER NAME:			DRAWN	-	-	-
			CHECKED	-	-	-
			APPROVED	-	-	-
			SCALE: NTS	REF. No.:	-	
					-	
			RATHI TRANSPower PVT LTD			DRG. No.:
PUNE 411014						-----

This drawing / information / design is the property of Rathi Transpower Pvt. Ltd. It is confidential & must not be made public or copied without prior written authorization & is subjected to recall at any time. Acceptance of this drawing constitutes full agreement with these conditions