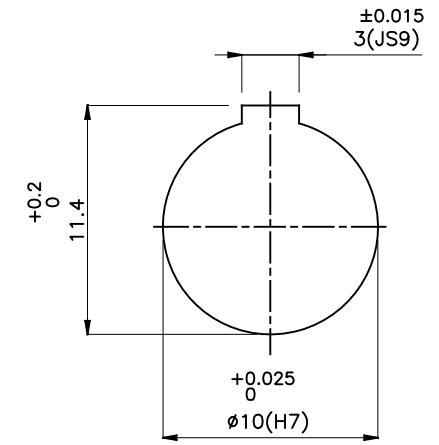
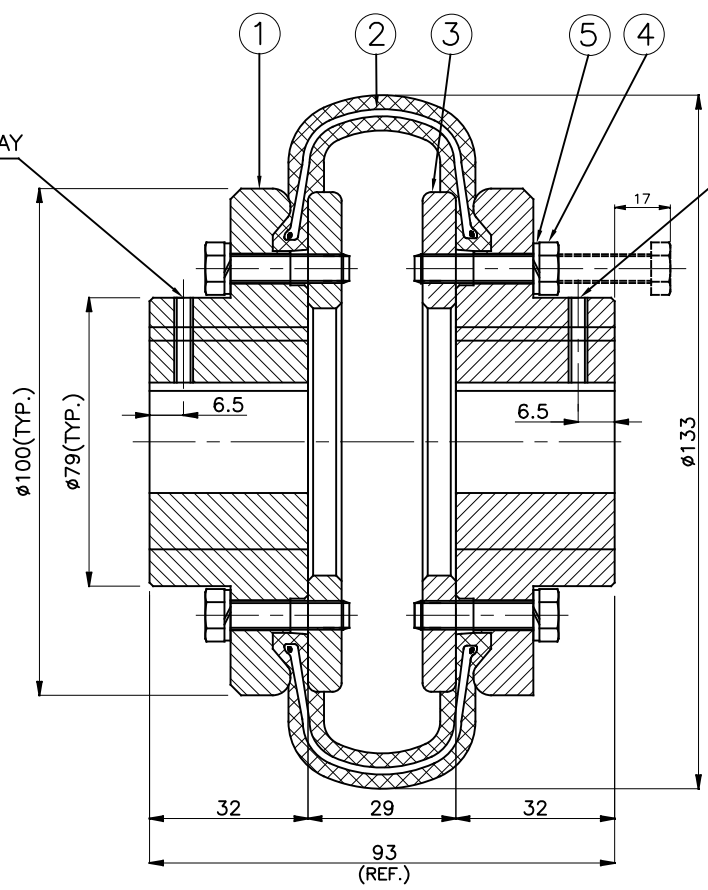
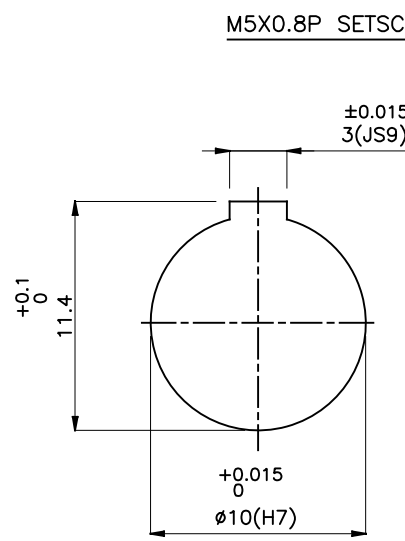


J I H G F E D C B A

DRIVE END

DRIVEN END



APPLICATION DETAILS

APPLICATION	-
RATED POWER	-
RATED SPEED	-
RATED TORQUE	-
A.S.F.	-

COUPLING SPECIFICATIONS

COUPLING RATING	0.69 kW @ 100 RPM
RATED TORQUE	0.066kNm.
PEAK TORQUE	0.0132 kNm.
MAX. SPEED	4500 rpm.
MAX. BORE	38 mm
WEIGHT(Approx.)	3.46 Kg
INERTIA (WK ²)	0.0035 Kgm ²

COUPLING HUBS DYNAMICALLY BALANCED TO GR.6.3 AS PER ISO: 1940-1.

MAX. MISALIGNMENTS

AXIAL DEFLECTION	±1.7 mm.
ANGULAR DEFLECTION	2°
RADIAL DEFLECTION	1.3 mm

5	SPRING WASHER	SPRING STEEL	8
4	HEX HEAD BOLT	HIGH TENSILE STEEL	8
3	CLAMPING RING	M.S. IS 2062	2
2	TYRE	NATURAL RUBBER	1
1	HUB	CI IS-210 GR.FG 260	2
SR NO	DESCRIPTION	MATERIAL	QTY.

REV.	DMRN NO.	DESCRIPTION	REV. BY	APPD. BY	DATE

TITLE: **T-5 B /---- CPLG.**

MATERIAL: REFER TABLE

AUTHORITY: INITIALS: SIGN: DATE:

CHECKED:

APPROVED:

CUSTOMER NAME:

SCALE: NTS REF. No.:

RATHI RATHI TRANSPOWER PVT LTD PUNE 411014 DRG. No.:

This drawing / information / design is the property of Rathi Transpower Pvt. Ltd. It is confidential & must not be made public or copied without prior written authorization & is subjected to recall at any time. Acceptance of this drawing constitutes full agreement with these conditions