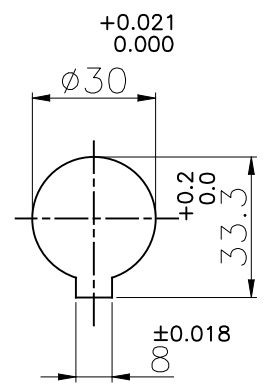
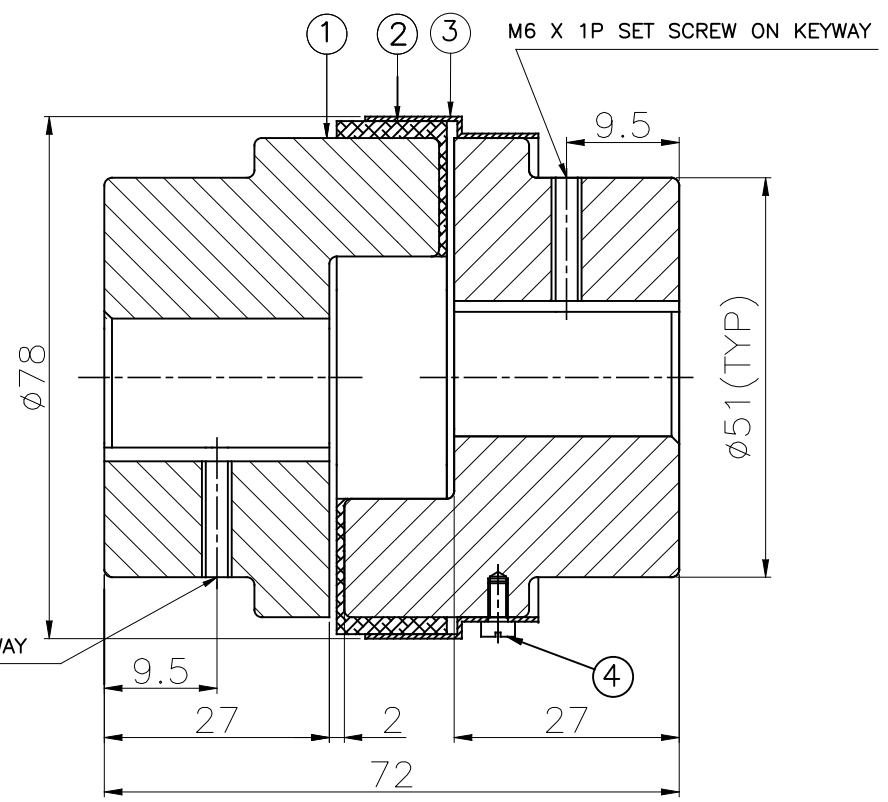
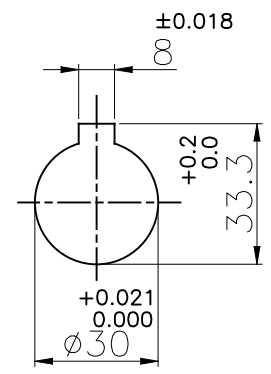


**DRIVE END**



**DRIVEN END**



**APPLICATION DETAILS**

APPLICATION	-
RATED POWER	- KW
RATED SPEED	- RPM
RATED TORQUE	- Nm
A.S.F.	-

**COUPLING SPECIFICATIONS**

COUPLING RATING	0.73 KW AT 100 RPM
RATED TORQUE	69.6 Nm
MAX. BORE	30 mm
WEIGHT (Approx.)	1.19 Kg
INERTIA (WK <sup>2</sup> )	8.00X10 <sup>-4</sup> Kg <sup>m</sup> <sup>2</sup>

CPLG HUBS DYNAMICALLY BALANCED TO GR.6.3 AS PER ISO 1940- I.

**MAX. MISALIGNMENTS**

AXIAL DEFLECTION	±1 mm
ANGULAR DEFLECTION	1°
RADIAL DEFLECTION	0.4 mm

4	CHEESE HEAD SCREW	STD	3
3	OUTSIDE RING	CRCA	1
2	SNAP WRAP	POLYURETHANE	1
1	HUB	CI IS 210 GR FG 260	2
SR NO	DESCRIPTION	MATERIAL	QTY.

REV.	DMRN NO.	DESCRIPTION	REV. BY	DATE	TITLE: <b>SW-99/-----CPLG</b>	MATERIAL: <b>REFER TABLE</b>	AUTHORITY	INITIALS	SIGN	DATE
					CUSTOMER NAME:		DRAWN	-	-	-
							CHECKED	-	-	-
							APPROVED	-	-	-
							SCALE:NTS	REF. No.:		
					<b>RAHI</b>	<b>RATHI TRANSPOWER PVT LTD</b>	DRG. No.:		-----/-	
						<b>PUNE 411006</b>				

This drawing / information / design is the property of Rathi Transpower Pvt. Ltd. It is confidential & must not be made public or copied without prior written authorization & is subjected to recall at any time. Acceptance of this drawing constitutes full agreement with these conditions