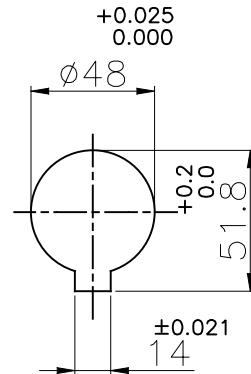
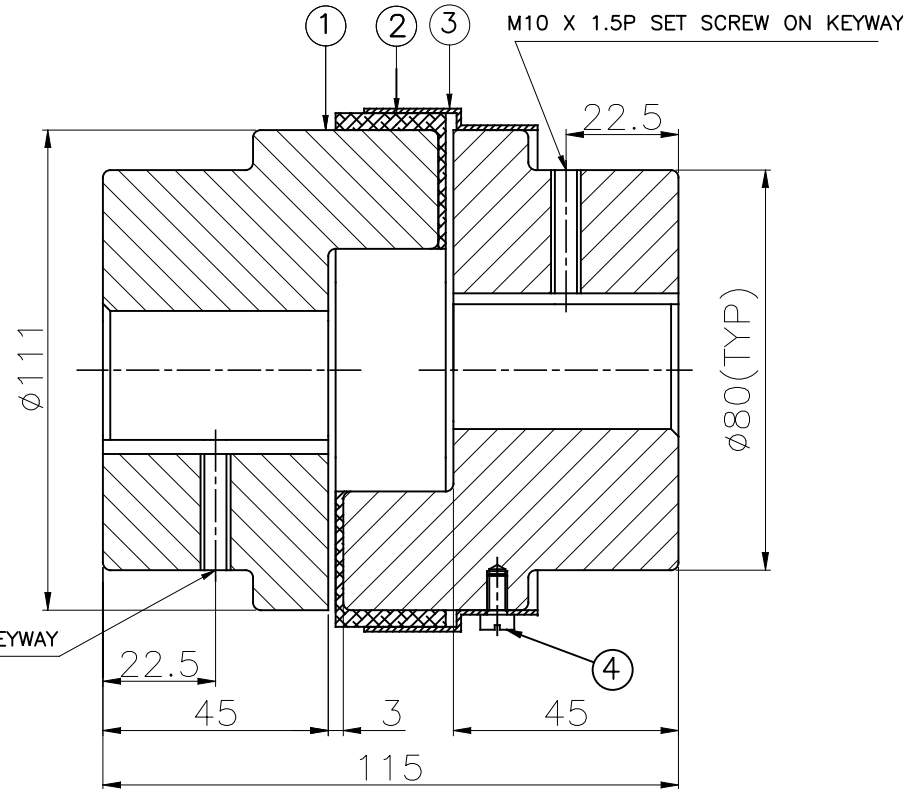
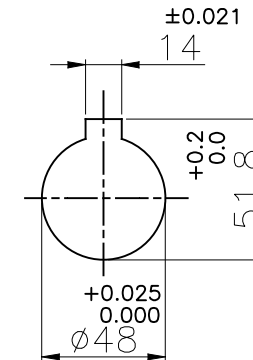


J I H G F E D C B A

**DRIVE END**



**DRIVEN END**



M10 X 1.5P SET SCREW ON KEYWAY

**APPLICATION DETAILS**

APPLICATION	-
RATED POWER	- KW
RATED SPEED	- RPM
RATED TORQUE	- Nm
A.S.F.	-

**COUPLING SPECIFICATIONS**

COUPLING RATING	2.2 KW AT 100 RPM
RATED TORQUE	211.5 Nm
MAX. BORE	48 mm
WEIGHT (Approx.)	4.05 Kg
INERTIA (WK <sup>2</sup> )	4.62X10 <sup>-3</sup> Kgm <sup>2</sup>

CPLG HUBS DYNAMICALLY BALANCED TO GR.6.3 AS PER ISO 1940- I.

**MAX. MISALIGNMENTS**

AXIAL DEFLECTION	±1.5 mm
ANGULAR DEFLECTION	1°
RADIAL DEFLECTION	0.4 mm

4	CHEASE HEAD SCREW	STD	3
3	OUTSIDE RING	CRCA	1
2	SNAP WRAP	POLYURETHANE	1
1	HUB	CI IS 210 GR FG 260	2
SR NO	DESCRIPTION	MATERIAL	QTY.

REV.	DMRN NO.	DESCRIPTION	REV. BY	DATE	TITLE: <b>SW-150/-----CPLG</b>	MATERIAL: <b>REFER TABLE</b>	AUTHORITY	INITIALS	SIGN	DATE
					CUSTOMER NAME:		DRAWN	-	-	-
							CHECKED	-	-	-
							APPROVED	-	-	-
							SCALE: NTS	REF. No.:		
										DRG. No.:
										-----/-
							<b>RATHI TRANSPOWER PVT LTD</b> PUNE 411006			

This drawing / information / design is the property of Rathi Transpower Pvt. Ltd. It is confidential & must not be made public or copied without prior written authorization & is subjected to recall at any time. Acceptance of this drawing constitutes full agreement with these conditions