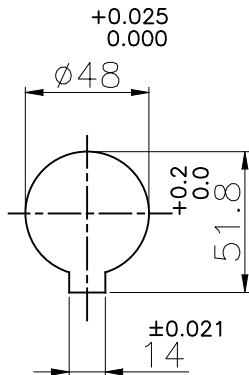
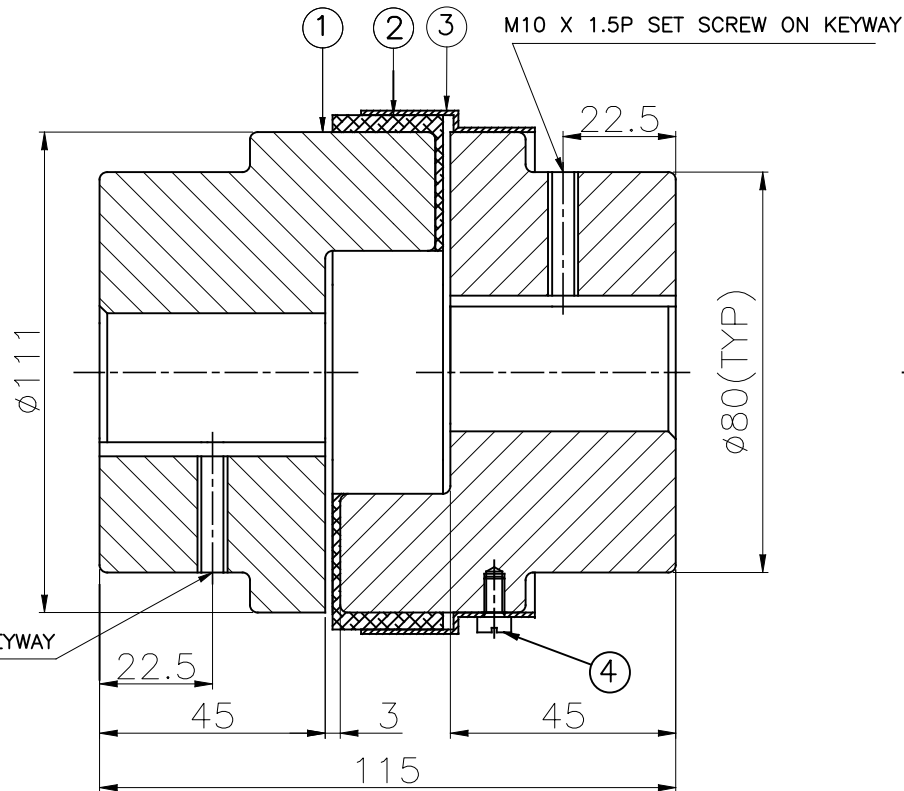
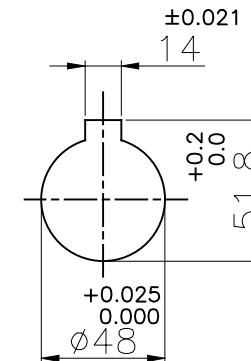


J I H G F E D C B A

DRIVE END



DRIVEN END



M10 X 1.5P SET SCREW ON KEYWAY

M10 X 1.5P SET SCREW ON KEYWAY

APPLICATION DETAILS

APPLICATION	-
RATED POWER	- KW
RATED SPEED	- RPM
RATED TORQUE	- Nm
A.S.F.	-

COUPLING SPECIFICATIONS

COUPLING RATING	1.5 KW AT 100 RPM
RATED TORQUE	141 Nm
MAX. BORE	48 mm
WEIGHT (Approx.)	4.05 Kg
INERTIA (WK ²)	4.62X10 ⁻³ Kgm ²

CPLG HUBS DYNAMICALLY BALANCED TO GR.6.3 AS PER ISO 1940- 1.

MAX. MISALIGNMENTS

AXIAL DEFLECTION	±1.5 mm
ANGULAR DEFLECTION	1°
RADIAL DEFLECTION	0.4 mm

4	CHEASE HEAD SCREW	STD	3
3	OUTSIDE RING	CRCA	1
2	SNAP WRAP	NITRILE RUBBER	1
1	HUB	CI IS 210 GR FG 260	2
SR NO	DESCRIPTION	MATERIAL	QTY.

REV.	DMRN NO.	DESCRIPTION	REV. BY	DATE

TITLE: **SW-150/----- CPLG** MATERIAL: **REFER TABLE**

AUTHORITY: _____ INITIALS: _____ SIGN: _____ DATE: _____

DRAWN: _____ CHECKED: _____ APPROVED: _____

CUSTOMER NAME: _____

SCALE: NTS REF. No.: _____

RATHI RATHI TRANSPower PVT LTD PUNE 411006 DRG. No.: _____

This drawing / information / design is the property of Rathi Transpower Pvt. Ltd. It is confidential & must not be made public or copied without prior written authorization & is subjected to recall at any time. Acceptance of this drawing constitutes full agreement with these conditions