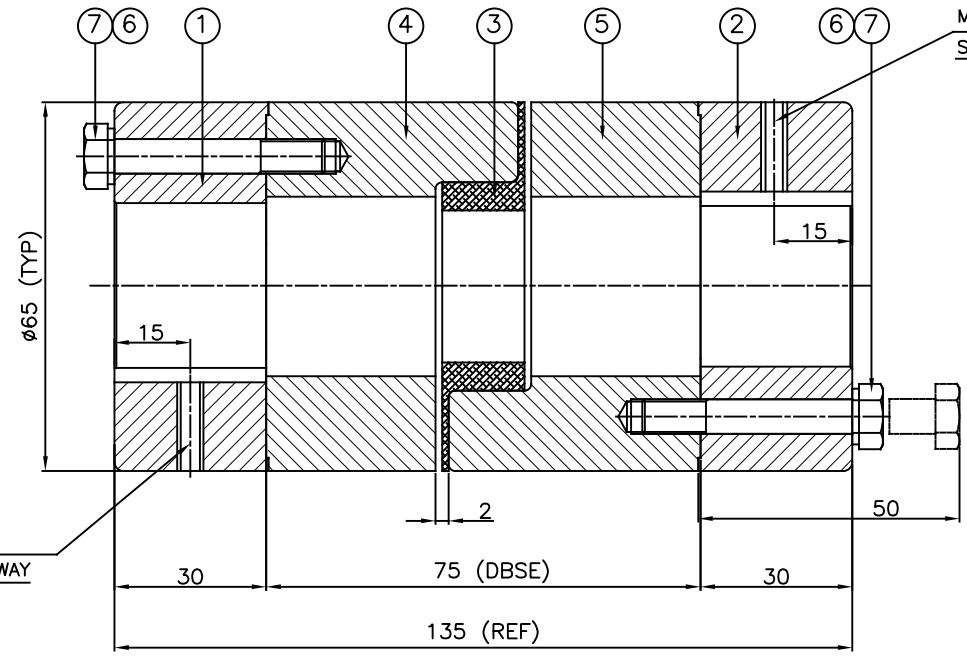
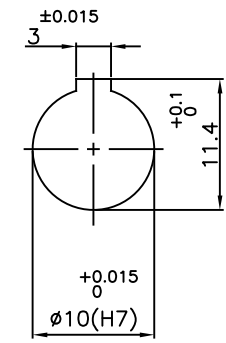
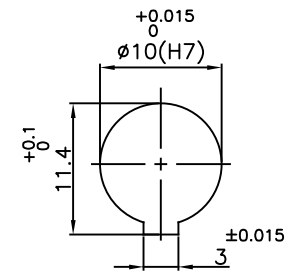


J I H G F E D C B A

DRIVE END

DRIVEN END



M6 X 1P
SET SCREW ON KEYWAY

M6 X 1P
SET SCREW ON KEYWAY

APPLICATION DETAILS

APPLICATION	-
RATED POWER	- KW
RATED SPEED	- RPM
RATED TORQUE	- kNm
A.S.F	-

COUPLING SPECIFICATIONS

COUPLING RATING	0.49 kW @ 100 RPM
RATED TORQUE	46.4 Nm
MAX BORE	38 mm
WEIGHT (APPROX)	2.18 Kg
INERTIA WK ² (APPROX)	0.004 Kgm ²

CPLG COMPONENTS DYNAMICALLY BALANCED TO GR.6.3 AS PER ISO 1940- 1.

MAXIMUM MISALIGNMENTS

AXIAL DEFLECTION	±1.0 mm
ANGUALR DEFLECTION	1°
RADIAL DEFLECTION	0.4 mm

ITEM NO.	DESCRIPTION	MATERIAL	QTY.
7	COUPLING BOLT	HIGH TENSILE STEEL	6
6	SPRING WASHER	SPRING STEEL	6
5	JAW BODY-2	C.I. IS 210 GR. FG 260	1
4	JAW BODY-1	C.I. IS 210 GR. FG 260	1
3	SPIDER	NITRILE RUBBER	1
2	HUB DRIVEN SIDE	C.I. IS 210 GR. FG 260	1
1	HUB DRIVE SIDE	C.I. IS 210 GR. FG 260	1

REV.	DMRN NO.	DESCRIPTION	REV. BY	APPD. BY	DATE

TITLE: **RRL-100(75)/- CPLG REFER TABLE**

MATERIAL: REFER TABLE

AUTHORITY: DRAWN: - INITIALS: - SIGN: - DATE: -

CHECKED: -

APPROVED: -

CUSTOMER NAME: -

SCALE: 1:1 REF. No.: -

RATHI RATHI TRANSPower PVT LTD PUNE 411014 DRG. No.: ---

This drawing / information / design is the property of Rathi Transpower Pvt. Ltd. It is confidential & must not be made public or copied without prior written authorization & is subjected to recall at any time. Acceptance of this drawing constitutes full agreement with these conditions