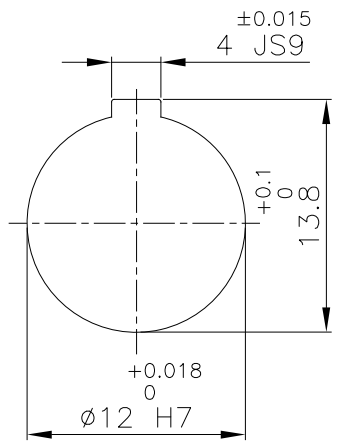
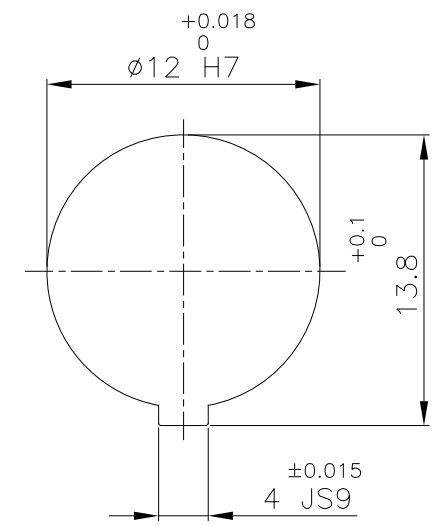
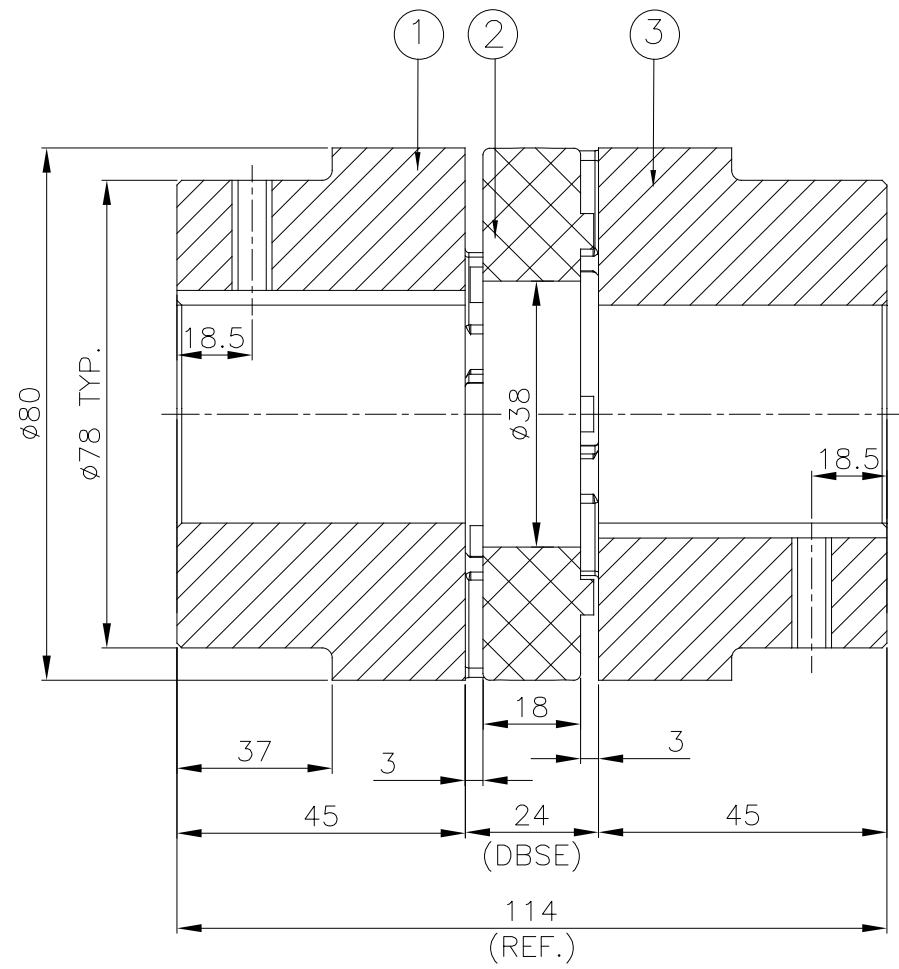


J I H G F E D C B A



DRIVE SIDE



DRIVEN SIDE

APPLICATION DETAILS	
APPLICATION	-
RATED POWER	- KW
RATED SPEED	- RPM.
RATED TORQUE	- Nm
A.S.F.	-
COUPLING CAPACITY	
COUPLING RATING	4.21 KW AT 100RPM.
RATED TORQUE	402 Nm
MAX. BORE TYPE-II	48mm
WEIGHT (APPROX)	2.4kg
INERTIA (WK <sup>2</sup> )	2.45X10 <sup>-3</sup> kg-m <sup>2</sup>
MAX. MISALIGNMENT	
AXIAL	±2.2mm
ANGULAR	0.90°
PARALLE	0.25mm

SR NO	DESCRIPTION	MATERIAL	QTY.
3	HUB-I	C.I IS:210	1
2	SPIDER	POLYURETHANE (LIGHT LVORY)	1
1	HUB-I	C.I IS:210	1

REV.	DMRN NO.	DESCRIPTION	REV. BY	APPD. BY	DATE

TITLE: <b>RRJ-38 II/II /---- CPLG.</b>		MATERIAL: <b>REFER TABLE</b>		AUTHORITY	INITIALS	SIGN	DATE
CUSTOMER NAME: -		SCALE: NTS		REF. No.:	-		
<b>RAHI</b>		<b>RATHI TRANSPOWER PVT LTD PUNE 411014</b>		DRG. No.: -----/-			

This drawing / information / design is the property of Rathi Transpower Pvt. Ltd. It is confidential & must not be made public or copied without prior written authorization & is subjected to recall at any time. Acceptance of this drawing constitutes full agreement with these conditions