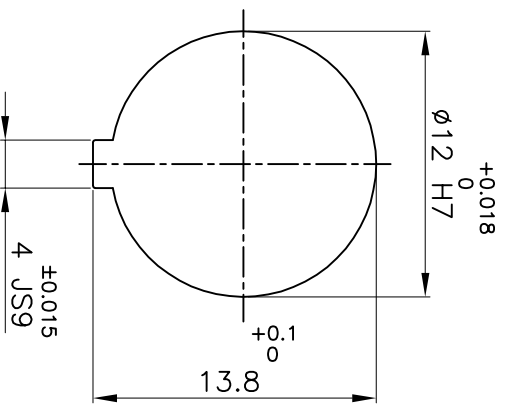
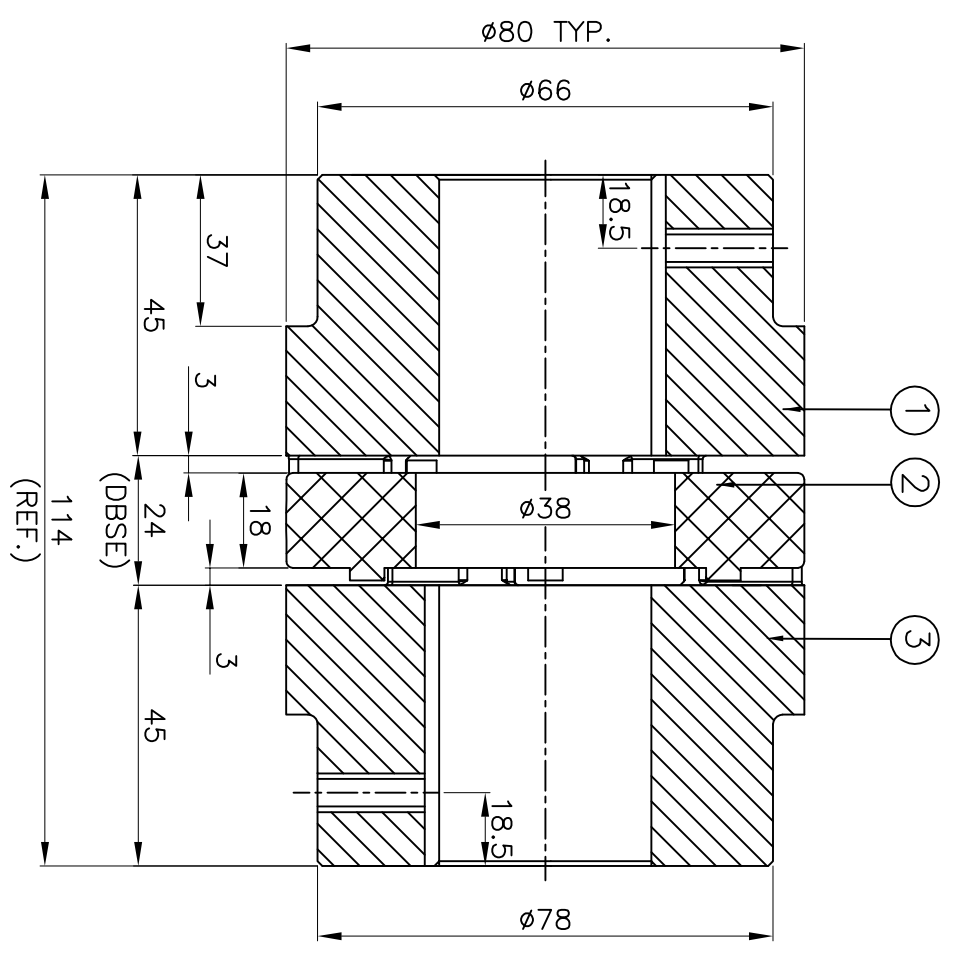


DRIVE SIDE



DRIVEN SIDE

APPLICATION DETAILS

| | |
|--------------|-------|
| APPLICATION | - |
| RATED POWER | - KW |
| RATED SPEED | - RPM |
| RATED TORQUE | - Nm |
| A.S.F. | - |

COUPLING CAPACITY

| | |
|----------------------------|---|
| COUPLING RATING | 1.90KW AT 100RPM. |
| RATED TORQUE | 182KNm |
| MAX. BORE TYPE-I & II | 40 & 48mm |
| WEIGHT (APPROX) | 2.4kg |
| INERTIA (WK ²) | 2.45X10 ⁻³ kg-m ² |

MAX. MISALIGNMENT

| | |
|----------|--------|
| AXIAL | ±2.2mm |
| ANGULAR | 0.90° |
| PARALLEL | 0.25mm |

| S/N | SR NO | DESCRIPTION | MATERIAL | QTY. |
|-----|--------|---------------------|----------|------|
| 3 | HUB-I | C.I IS:210 | | 1 |
| 2 | SPIDER | POLYURETHANE (GRAY) | | 1 |
| 1 | HUB-I | C.I IS:210 | | 1 |

TITLE: **RRJ-38 I/II / - - - -**
 CPLG. REFER TABLE
 CUSTOMER NAME: -
 MATERIAL: -
 AUTHORITY INITIALS: -
 DRAWN: -
 CHECKED: -
 APPROVED: -
 SCALE: NTS REF. No.: -
 DRG. No.: - - - - - / -

RATHI RATHI TRANSPOWER PVT LTD
 PUNE 411014